



High Street

Guide Price £200,000 to £210,000

- No Chain
- Three Bedrooms
- Converted Loft Space
- Enclosed Rear Garden with Garage Storage Space
- Two Reception Rooms
- Family Bathroom and Downstairs Wc
- Close to Shops, Schools and Leisure Facilities



3 1 2

Pinkmove

01633 746088
team@pinkmove.co.uk



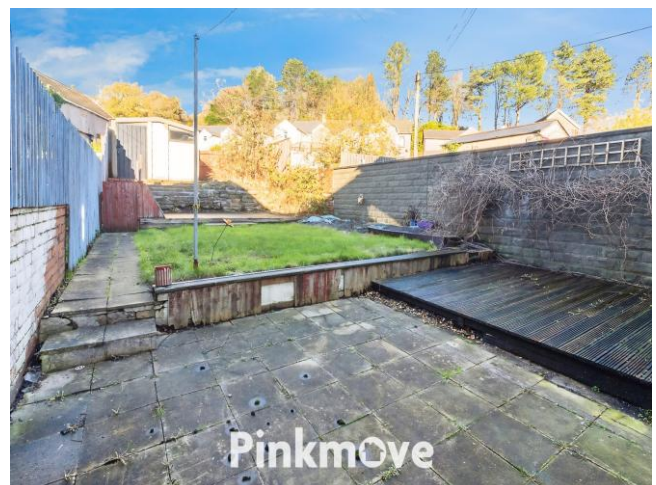
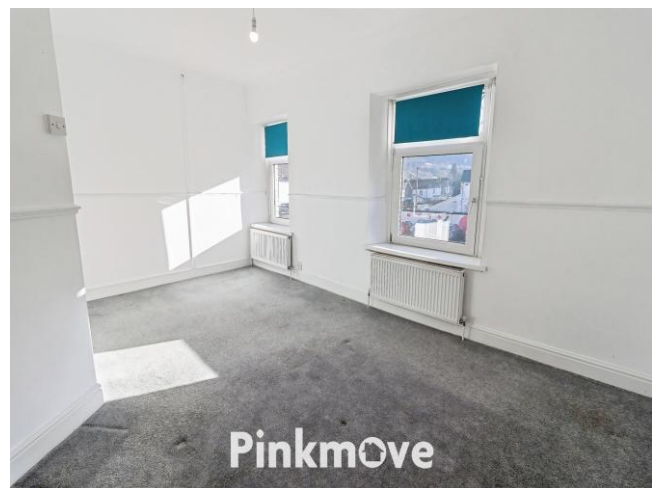
About the property

Nestled on High Street in the heart of Newbridge, this charming end-terraced home offers a perfect blend of space, convenience, and character.

Step inside to discover two inviting reception rooms seamlessly connected by an elegant archway, creating a versatile space for both relaxation and entertaining. To the rear, you'll find a well-appointed kitchen complemented by a practical utility area and a convenient downstairs WC. Upstairs, the property boasts a family bathroom complete with both bath and shower, alongside three adaptable bedrooms ideal for family living or home office use. The converted loft adds valuable storage options, enhancing the home's functionality. Outside, the enclosed garden provides a private retreat with a mix of patio and lawn—perfect for outdoor dining or play. There is also a detached garage used for storage.

The property is ideally situated within walking distance of local shops, cafés, and everyday amenities, while highly regarded schools such as Newbridge School are just under a mile away, making it an excellent choice for families. For leisure, the nearby Newbridge Leisure Centre and scenic walks along the River Ebbw are only a short stroll, and excellent transport links provide easy access to surrounding towns and cities.

This delightful home combines comfort and practicality in a location that truly has everything on its doorstep.





Accommodation

Lounge

9' 10" x 13' 1" (3.00m x 3.99m)

Dining Room

11' 11" x 13' 5" (3.63m x 4.09m)

Kitchen

11' 4" x 9' 9" (3.45m x 2.97m)

Utility

11' 2" x 9' 9" (3.40m x 2.97m)

Max Measurements

Downstairs Wc

3' 5" x 4' 8" (1.04m x 1.42m)

Bedroom 1

10' 9" x 16' 2" (3.28m x 4.93m)

Max Measurements

Bedroom 2

11' 2" x 10' 6" (3.40m x 3.20m)

Max Measurements

Bedroom 3

11' 6" x 9' 11" (3.51m x 3.02m)

Bathroom

12' 2" x 6' 10" (3.71m x 2.08m)

Loft Space

15' 9" x 15' 10" (4.80m x 4.83m)

01633 746088

team@pinkmove.co.uk

Pinkmove

Floorplan



Total area: approx. 135.1 sq. metres (1454.5 sq. feet)
30 High Street

Important Information

Note while we endeavour to make our sales details accurate and reliable, if there is any point which is of particular interest to you, please contact the office and we will be pleased to confirm the position for you. We have not personally tested any apparatus, equipment, fixtures, fittings or services and cannot verify they are in working order or fit for their purposes. Nothing in these particulars is intended to indicate that carpets or curtains, furnishings or fittings, electrical goods (whether wired or not). Gas fires or light fittings or any other fixtures not expressly included form part of the property offered for sale. This computer generated Floorplan, if applicable, is intended as a general guide to the layout and design of the property. It is not to scale and should not be relied upon for dimensions. Tenure: We cannot confirm the tenure of the property as we have not had access to the legal documents. The buyer is advised to obtain verification from their solicitor or surveyor.

Peter Alan Limited is registered in England and Wales under company number 2073153, Registered Office is Cumbria House, 16-20 Hockliffe Street, Leighton Buzzard, Bedfordshire, LU7 1GN. VAT Registration Number is 500 2481 05. For activities relating to regulated mortgages and non-investment insurance contracts, Peter Alan Limited is an appointed representative of Connells Limited which is authorised and regulated by the Financial Conduct Authority. Connells Limited's Financial Services Register number is 302221. Most buy-to-let

