



CANBERRA ROAD, SE7

£675,000

Semi-detached house
Three bedrooms
Two reception rooms
Garden
Garage
Energy rating: D

@marshandparsons
marshandparsons.co.uk

MARSH &
PARSONS



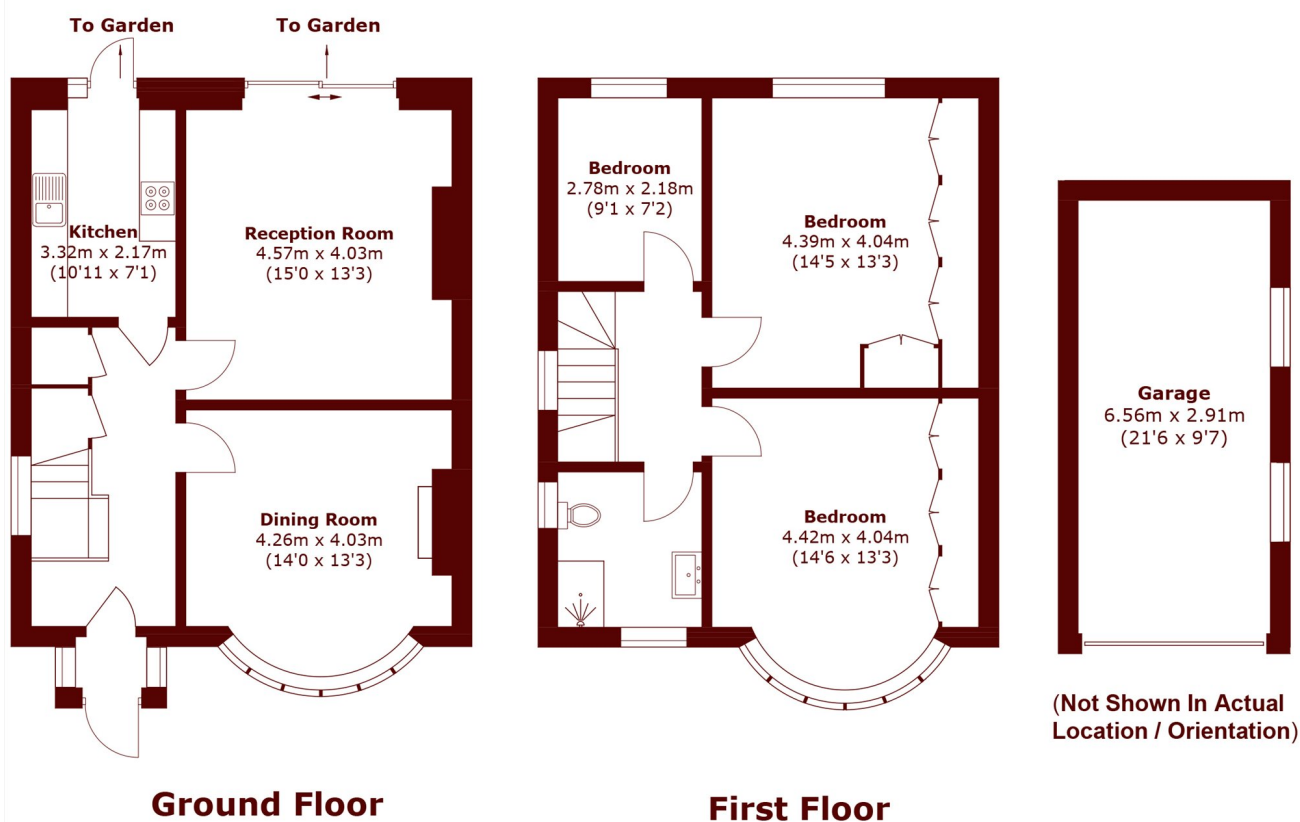
ABOUT THE PROPERTY

This three bedroom semi-detached house offers the perfect blank family home. It features a large driveway and a abnormally large south facing garden with a garage. It Benefits from views overlooking Charlton Park. Upstairs comprises three well-proportioned bedrooms and a family bathroom, with scope to extend (subject to planning permissions).

Prime location Minutes away from Charlton Village and Charlton Station. Excellent transport links offer easy access to historic Greenwich, Blackheath, North Greenwich Tube Station, and fast Elizabeth Line connections via Woolwich.



STEP INSIDE CANBERRA ROAD



Approx Internal Area: 106.4 sq. m (1,145.2 sq. ft)
Garage: 19.1 sq. m (205.6 sq. ft)

Charlton
020 8293 0454

Energy Rating: D We aim to make our particulars both accurate and reliable. However, they are not guaranteed; nor do they form part of an offer or contract. If you require clarification on any points then please contact us, especially if you're traveling some distance to view. Please note that appliances and heating systems have not been tested and therefore no warranties can be given as to their good working order

MARSH &
PARSONS