



Rainbow Quay, SE16

£3,250 Per calendar month

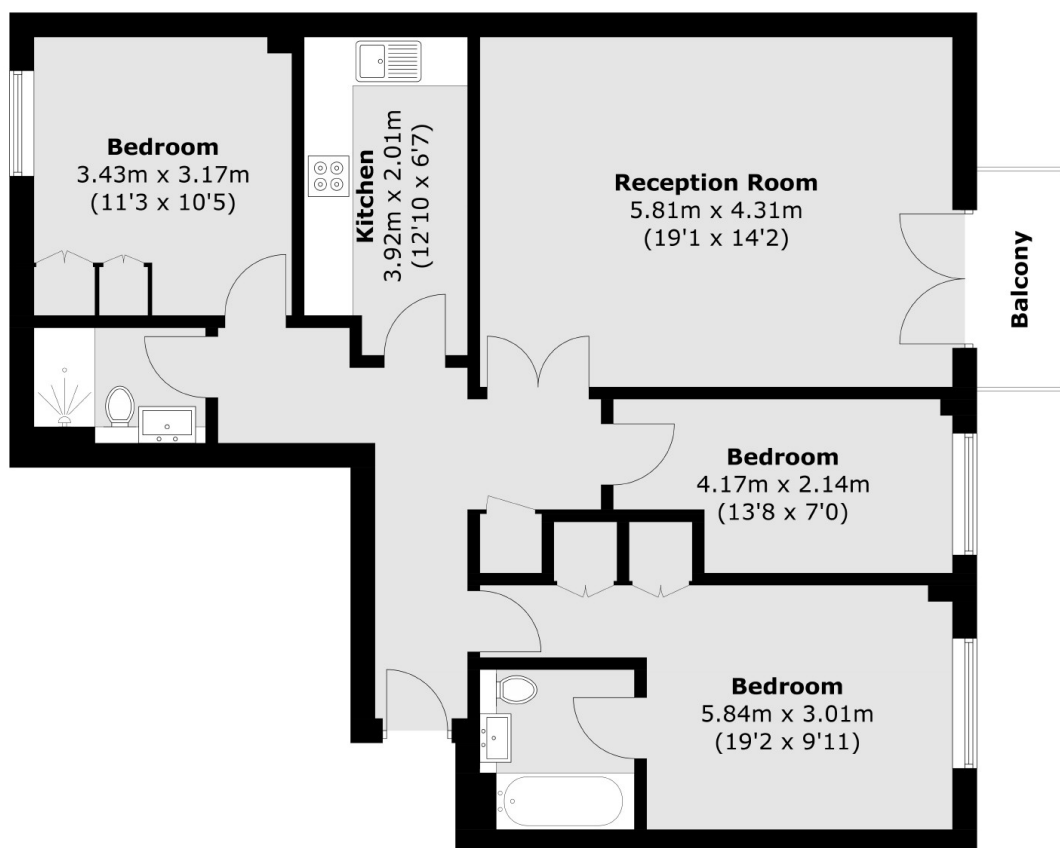
A three bedroom, two bathroom property located by Greenland Dock. A bright living space leads to a private balcony and the property also has a separate kitchen, built in storage and the property comes furnished.

Rainbow Quay is a fifteen minute walk to Surrey Quays Station for the Windrush Line and 1 mile from Canada Water Station for the Jubilee Line. Canada Water also has local amenities such as shops, bars and restaurants.

Features

- Three Bedrooms
- Two Bathrooms
- Balcony
- Furnished
- Second Floor
- Greenland Dock

Rainbow Quay, London, SE16



Total area (approx.): 88.9 sq. m (956.9 sq. ft)
Balcony area (approx.): 2.9 sq. m (31.2 sq. ft)