



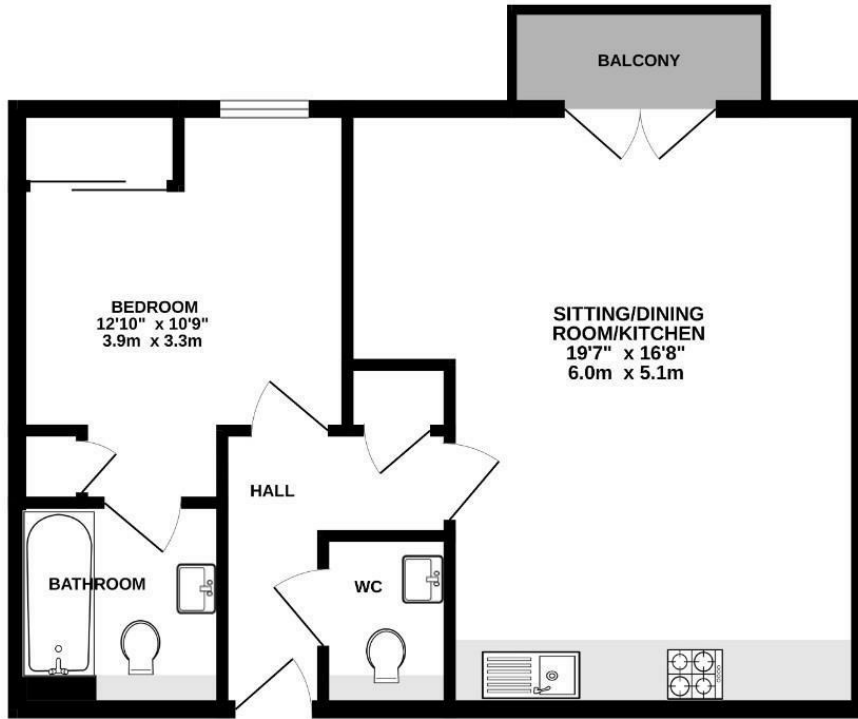
**1 Bed  
Apartment -  
Purpose Built  
located in**

**£1,500 Per month**



**fairoaks**

FIRST FLOOR  
535 sq.ft. (49.7 sq.m.) approx.



TOTAL FLOOR AREA: 535 sq.ft. (49.7 sq.m.) approx.

Whilst every attempt has been made to ensure the accuracy of the floorplan contained here, measurements of doors, windows, rooms and any other items are approximate and no responsibility is taken for any error, omission or mis-statement. This plan is for illustrative purposes only and should be used as such by any prospective purchaser. The services, systems and appliances shown have not been tested and no guarantee as to their operability or efficiency can be given.  
Made with Metropix ©2024.



Energy Efficiency Rating		
	Current	Potential
Very energy efficient - lower running costs		
(92 plus) <b>A</b>		
(81-91) <b>B</b>	84	84
(69-80) <b>C</b>		
(55-68) <b>D</b>		
(39-54) <b>E</b>		
(21-38) <b>F</b>		
(1-20) <b>G</b>		
Not energy efficient - higher running costs		
England & Wales	EU Directive 2002/91/EC	

DIRECTIONS

CONTACT

Nicholson House Thames Street  
Weybridge  
Surrey  
KT13 8JG

E: [enquiries@fairoaksgroup.co.uk](mailto:enquiries@fairoaksgroup.co.uk)  
T: 01932 509 619



fairoaks