



homeworks
estate agent



54 Swaffham Road
Dereham, NR19 2DL

☎ (01362) 65 44 44
✉ sales@homeworks-uk.com
🌐 www.homeworks-uk.com

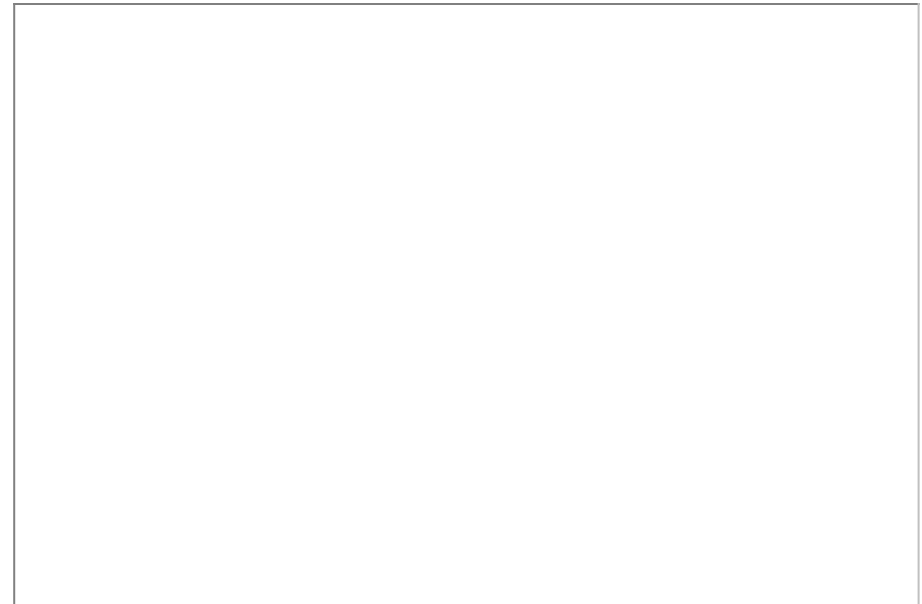
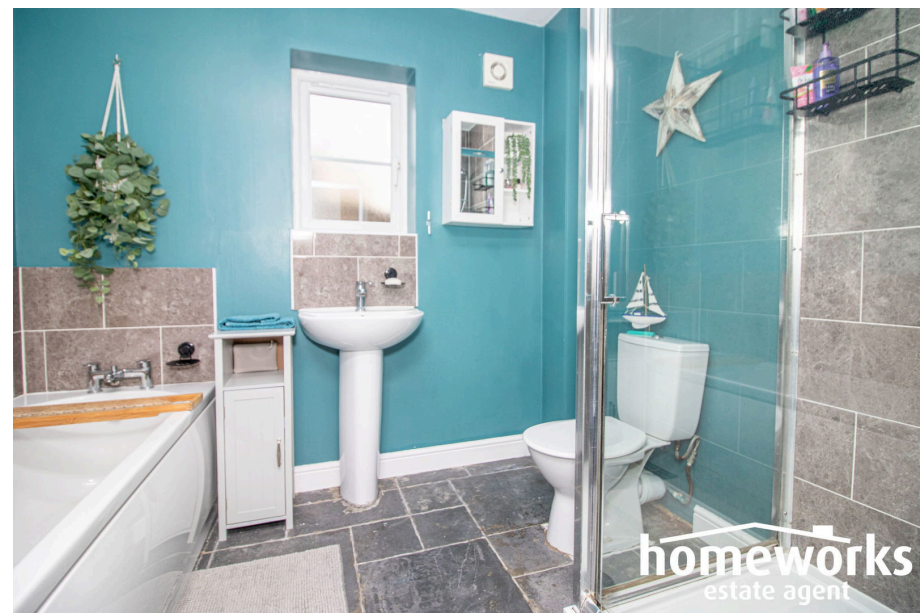
Erwin Court, Dereham, NR19 1GF

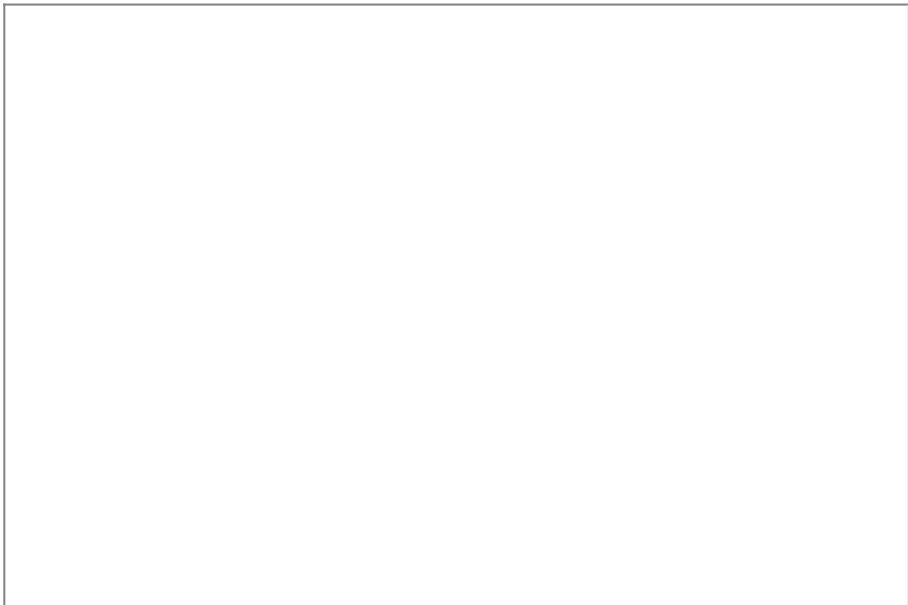
Offers In Region Of £150,000

🛏️ 2 🍳 1 🚿 1

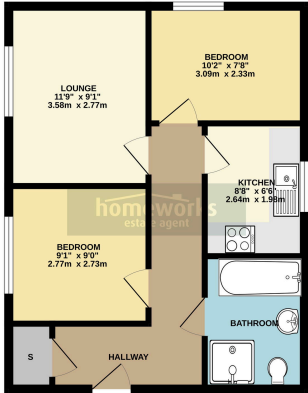


- **** FANTASTIC FIRST TIME BUY OR INVESTMENT ****
- **TWO BEDROOMS**
- **MODERN FITTED KITCHEN**
- **GAS CENTRAL HEATING WITH UNDERFLOOR HEATING**
- **ALLOCATED PARKING SPACE**
- **GROUND FLOOR FLAT**
- **11'9 LOUNGE**
- **FOUR PIECE FAMILY BATHROOM**
- **POPULAR LOCATION CLOSE TO TOWN**
- **** CALL TODAY TO ARRANGE YOUR VIEWING! ****





GROUND FLOOR
480 sq.ft. (44.6 sq.m.) approx.



TOTAL FLOOR AREA: 480 sq.ft. (44.6 sq.m.) approx.
We have every effort to ensure the accuracy of the floor plan. However, we do not warrant the accuracy of the floor plan. The floor plan is for information only and should not be used as a basis for any purchase. The actual floor plan may vary from the floor plan shown on the website.

**** FANTASTIC FIRST TIME BUY OR INVESTMENT ** | GROUND FLOOR FLAT | TWO BEDROOMS | 11'9 LOUNGE | MODERN FITTED KITCHEN | FOUR PIECE FAMILY BATHROOM | UPGRADED UNDERFLOOR HEATING | POPULAR LOCATION CLOSE TO TOWN | POPULAR LOCATION CLOSE TO TOWN | ALLOCATED PARKING SPACE | ** CALL TODAY TO ARRANGE YOUR VIEWING! ****



C AMOS MNAEA Managing Director
VAT no. 185 328 683

