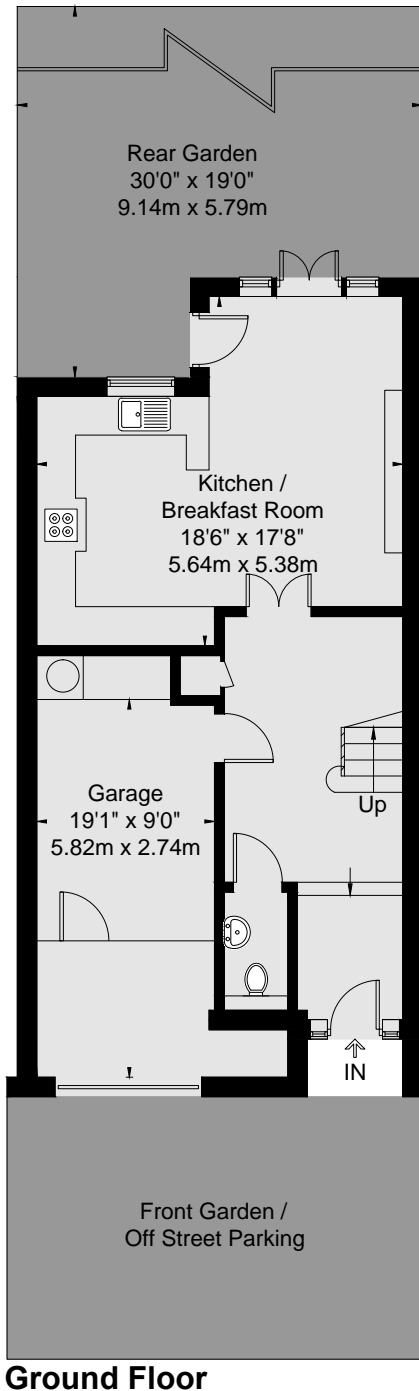

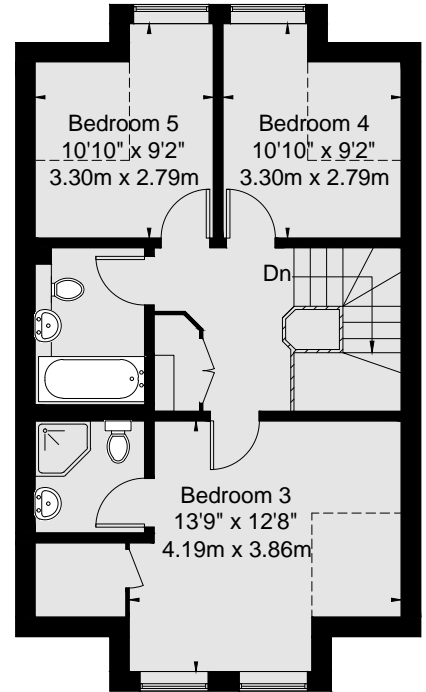
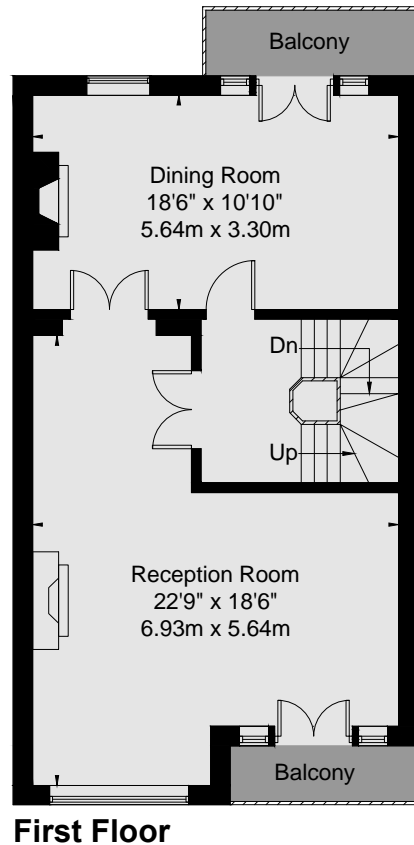


# Kelsall Mews

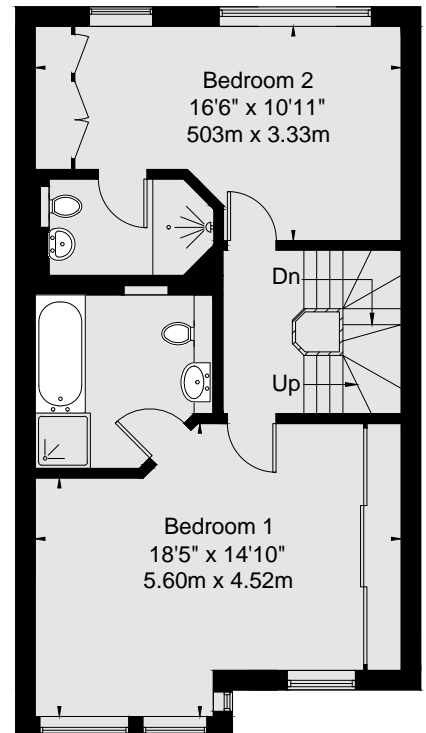
Approx Gross Internal Area  
 Ground Floor = 62.1 Sq m / 668 Sq Ft  
 First Floor = 57.2 Sq m / 615 Sq Ft  
 Second Floor = 57.8 Sq m / 622 Sq Ft  
 Third Floor = 52.1 Sq m / 560 Sq Ft  
 Total = 229.2 Sq m / 2465 Sq Ft



 = Reduced headroom below 1.5m / 5'0"



**Third Floor**



**Second Floor**

Viewmedia @ 2026  
 Viewmedia.co.uk

Whilst every attempt has been made to ensure the accuracy of this floor plan, measurements of doors, windows and rooms are approximate and no responsibility is taken for any error or omission. This illustration is for identification purpose only. Not drawn to scale, unless stated. Dimensions shown are to the nearest 3" and are to the points indicated by the arrow heads.