







14 Hawthorne Street

Chesterfield • Derbyshire • S40 2EG

Guide Price £120,000 to £130,000

This modern two-bedroom mid-terraced home is offered with no onward chain and is ideal for first-time buyers, couples and professionals. Well positioned close to local amenities, with excellent transport links to the M1 and by-pass, it is also just a short drive from Chesterfield town centre and the train station, making it a convenient and well-connected place to live. On entering the property, an entrance area leads to the front-facing living room. From here, you continue through to the kitchen-diner, which includes shaker-style storage cupboards, space for freestanding appliances alongside integrated appliances, and a rear door opening out to the garden. Upstairs, there are two double bedrooms. The principal bedroom faces the front of the property and includes a useful storage cupboard, while the second bedroom overlooks the rear garden and is also a comfortable double. Completing the first floor is the three-piece bathroom, fitted with a shower over the bath, basin, toilet and an additional storage cupboard. To the rear, the property enjoys a patio seating area leading onto a large, fully enclosed lawned garden, offering plenty of outdoor space to relax or entertain





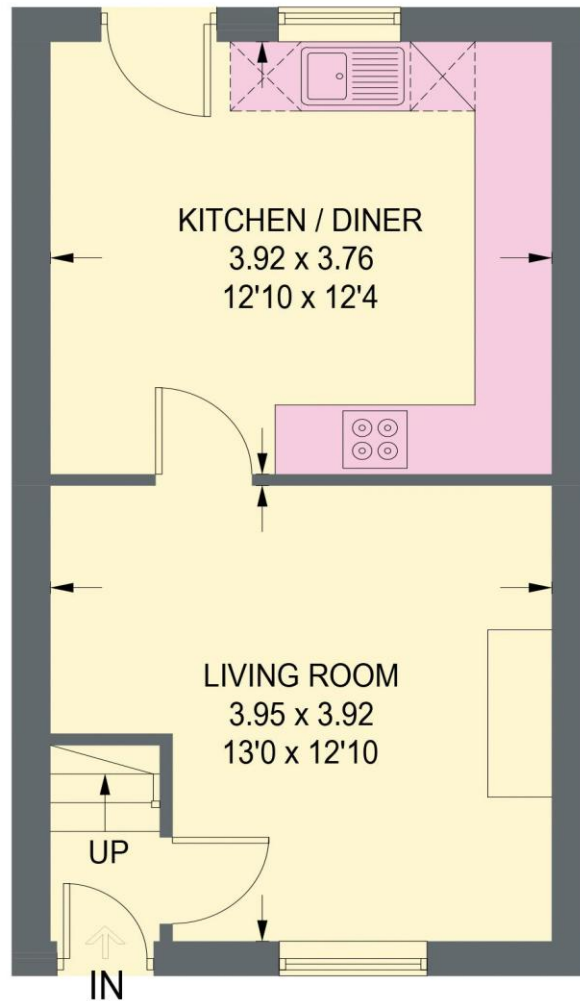
- Two Bedroom Mid-Terraced
- On Road Parking
- Large Kitchen-Dining Area
- Modern Kitchen w/ Fitted Shaker Style Cupboards
- Three Piece Bathrooms
- Two Double Bedrooms
- Large Private Rear Garden
- Close To Amenities & Short Drive To Town Centre
- No Onward Chain
- Council Tax Band A & EPC Rating TBC



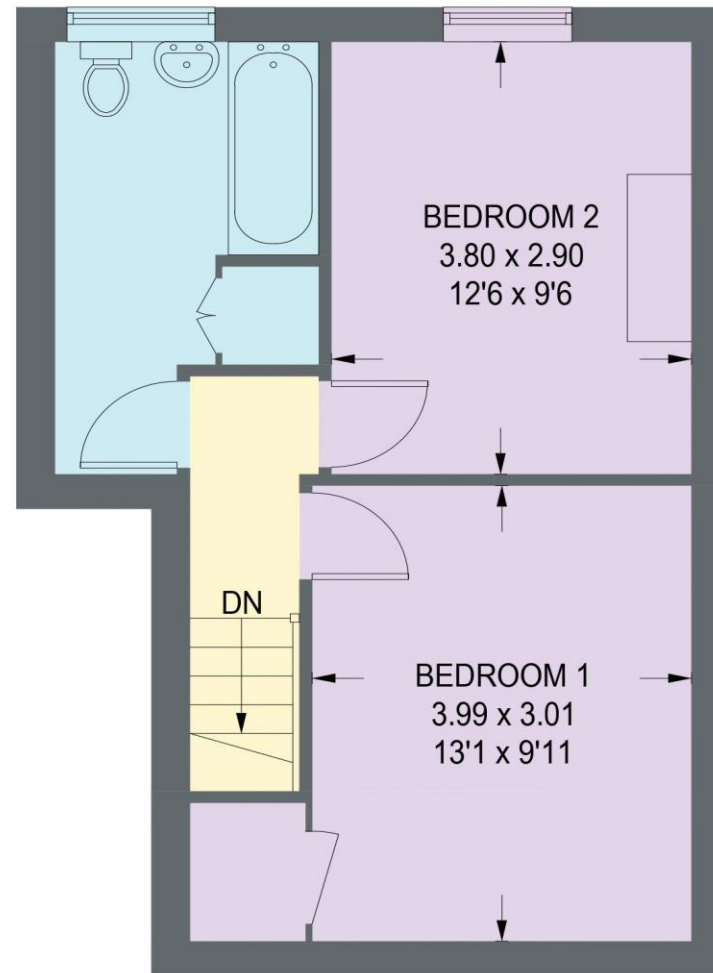


14 HAWTHORNE STREET

APPROXIMATE GROSS INTERNAL AREA
65.8 SQ M / 708.6 SQ FT



GROUND FLOOR
30.6 SQ M / 329.5 SQ FT



FIRST FLOOR
35.2 SQ M / 379.1 SQ FT

Illustration for identification purposes only, measurements are approximate, not to scale. (ID1266411)



haus

31 West Bars, Chesterfield, S40 1AG
chesterfield@haushomes.co.uk haushomes.co.uk

01246 380 535