



NEWINGTON LONDON

1 Bedrooms

Not specified

Located in London

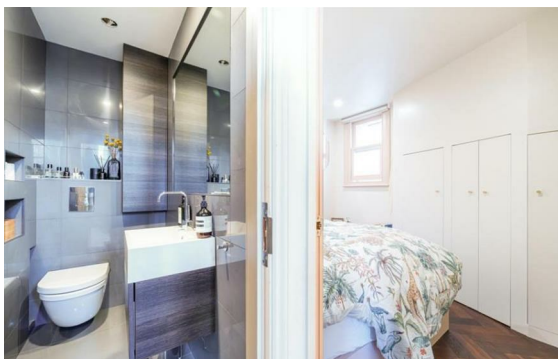
£955 Per Month



info@newingtonstates.com

<http://www.newingtonstates.com>

020 7724 2233



Positioned on the second floor of an attractive building offering concierge services and lift access, this stylish one-bedroom apartment provides well-proportioned and comfortable living space.

The accommodation includes an open-plan reception room with a modern fitted kitchen, a generous double bedroom, and a contemporary bathroom. Wooden flooring runs throughout, enhancing the bright and modern feel of the apartment.

EPC rating: C

Energy Efficiency Rating: C

Agents Note: Whilst every care has been taken to prepare these particulars, they are for guidance purposes only. All measurements are approximate and are for general guidance purposes only and whilst every care has been taken to ensure their accuracy, they should not be relied upon and potential buyers/tenants are advised to recheck the measurements.

NEWINGTON LONDON

60 Upper Montagu Street

London

W1H 1SN

020 7724 2233

info@newingtonstates.com

<http://www.newingtonstates.com>