



## Jeddo Road, W12

£501 Per week

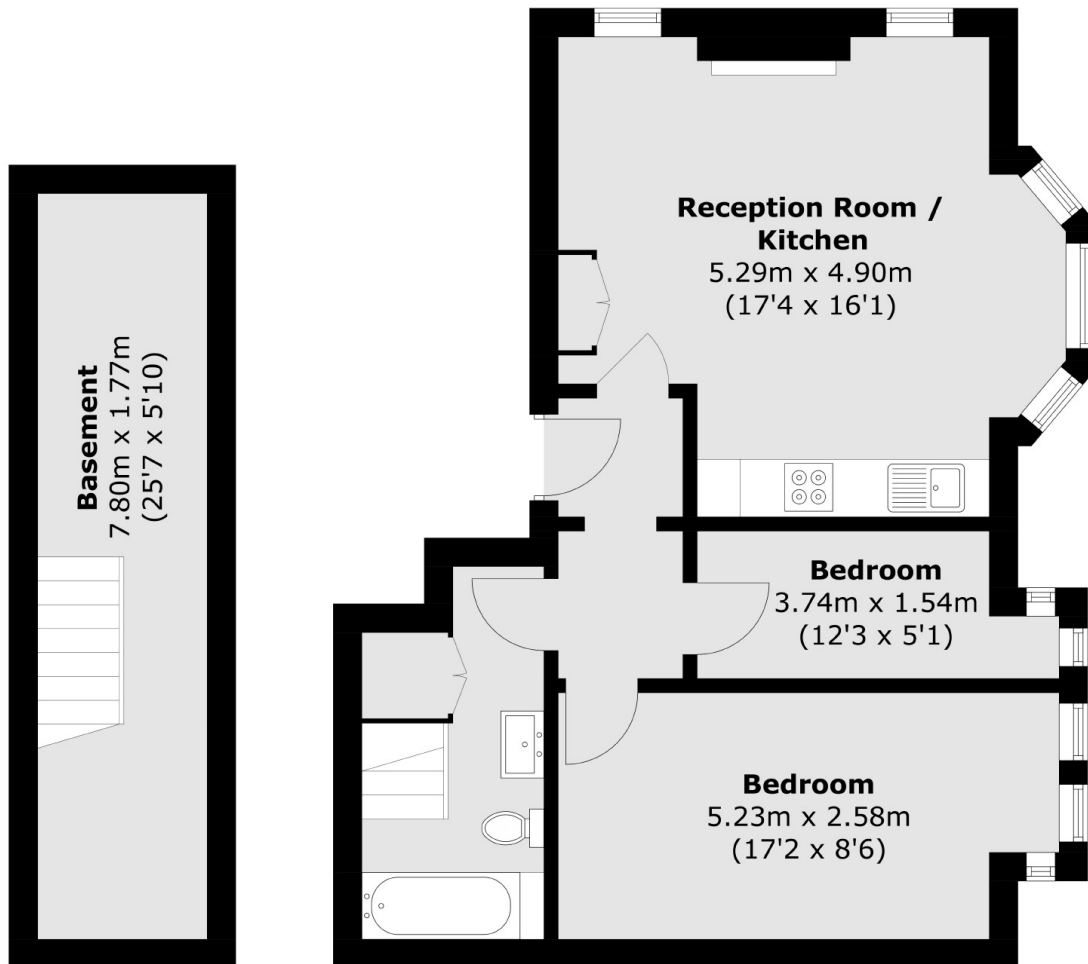
An immaculately finished two double bedroom maisonette has an open plan living space and direct access to a private garden; perfect for a small family who enjoy hosting guests.

Jeddo Road is located just under a mile from Stamford Brook Station and one mile from the local amenities of Chiswick High Road. Also, close to Askew Road and a few minutes walk from Wendell Park.

### Features

- Victorian Conversion
- Two Bedrooms
- Open Plan Living
- Wood Flooring
- Recently Refurbished
- Unfurnished
- Private Garden

Jeddo Road,  
London, W12



**Basement**

**Ground Floor**

Total area (approx.): 67.3 sq. m (724.4 sq. ft)  
(Including Basement)