

Apartment 52 Didsbury Gate, 1 Houseman Crescent, West Didsbury, Manchester, M20
2JB



JP&Brimelow
ESTATE AGENTS

Offers In The Region Of £335,000




VIDEO TOUR AVAILABLE A light & spacious TWO DOUBLE BEDROOM First floor apartment, located in this highly popular development known as Didsbury Gate. Just a short walk from Burton Road, home to a variety of independent boutique shops, popular bars, restaurants, and cafés, as well as nearby Metrolink stations on The Parkway, Withington, and Lapwing Lane in West Didsbury, offering direct links to the city centre, MediaCity, and Didsbury Village. The well portioned accommodation consists of a stunning communal entrance hallway with sweeping staircase and lift to all floors, a private entrance hallway, useful storage cupboard, an impressive open plan lounge/dining/fully fitted kitchen with access out onto the balcony, two double bedrooms, one complete with a three-piece ensuite shower room and a separate three-piece bathroom. Features include an electric central heating system, high ceilings, and sash windows. Outside, there are beautifully landscaped communal gardens and a secure, allocated parking space.





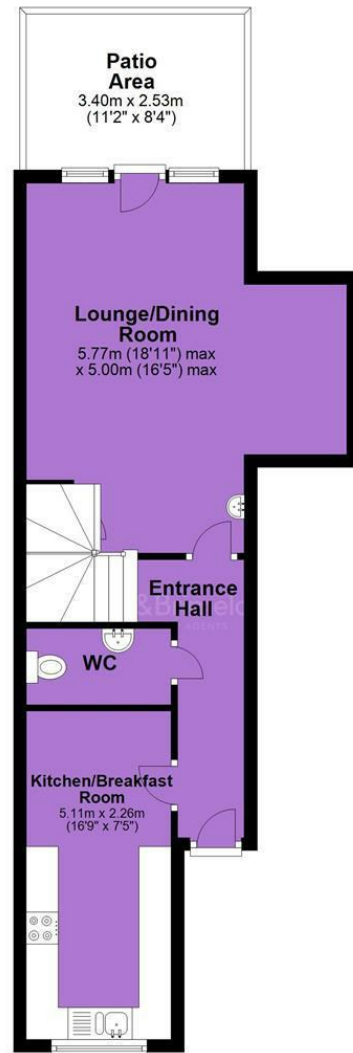
EPC Chart

| Energy Efficiency Rating | | Current | Potential |
|---|--|---|-----------|
| Very energy efficient - lower running costs | | | |
| (92 plus) A | | | |
| (81-91) B | | | |
| (69-80) C | | | |
| (55-68) D | | | |
| (39-54) E | | 56 | |
| (21-38) F | | | |
| (1-20) G | | | |
| Not energy efficient - higher running costs | | | |
| England & Wales | | EU Directive 2002/91/EC  | |

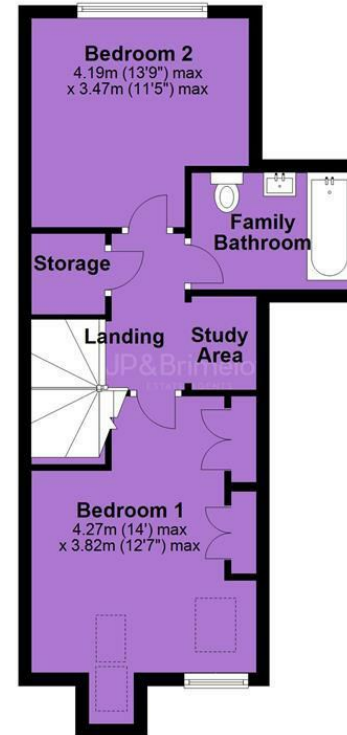


Tenure: **Leasehold** Council Tax Band: **C**

First Floor



First Floor



JP & Brimelow Estate Agents Ltd
430 Barlow Moor Road, Manchester, M21 8AD
Tel: 0161 8822233
E: sales@jpbrimelow.co.uk www.jpandbrimelow.co.uk



JP & Brimelow
ESTATE AGENTS

NOTICE: JP & Brimelow Estate Agents Ltd for themselves and for the vendors or lessors of this property whose agents they give notice that:

- (i) the particulars are set out as a general outline only for the guidance of intending purchasers or lessees, and do not constitute, nor constitute part of, an offer or contract;
- (ii) all descriptions, dimensions, references to the condition and necessary permissions for use and occupation, and other details are given in good faith and are believed to be correct but any intending purchasers or tenants should not rely on them as statements or representations of fact but must satisfy themselves by inspection or otherwise as to the correctness of each of them;
- (iii) no person in the employment of JP & Brimelow Estate Agents Ltd has any authority to make or give any representation or warranty whatever in relation to this property.

jpandbrimelowestateagents

@jpandbrimelow