



Lowndes Square, London, SW1X 9JX



Lowndes Square, London, SW1X

Leasehold (123 years - exp 14.06.2149)

A light and spacious apartment situated on the ground floor of one of the exclusive apartment blocks on the west terrace of the square.

Key Features

- 2 Bedrooms, 1 Bathroom
 - Chain free
 - Beautifully presented
 - Council Tax: **G**
 - 24 Hour security
 - City of Westminster council
 - Excellent transport links
 - EPC: **C**
-

A bright and airy ground floor apartment in this well maintained portered block in the heart of Knightsbridge. The property has been finished to a high standard throughout and comprises a large reception room, separate modern kitchen, one single bedroom, one double bedroom and one bathroom.

The apartment is quietly positioned at the rear of the building and benefits from 24-hour security, access to communal gardens and a porter.

Lowndes Square is ideally situated within walking distance of Sloane Street, Knightsbridge underground station and the Brompton Road.

Service Charge: £3,273 for the quarter ending 24.03.2026

Ground Rent - Peppercorn



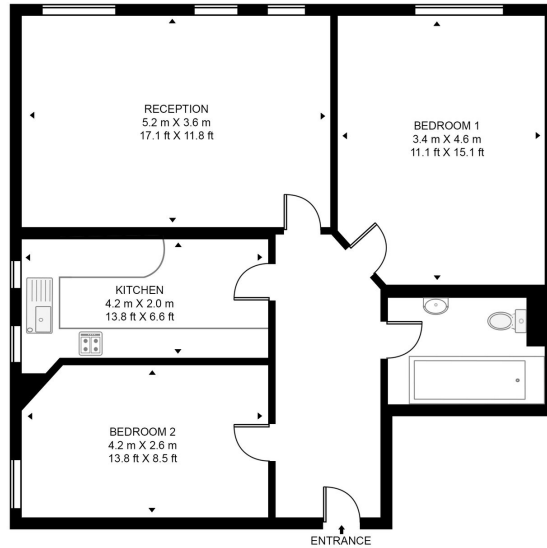






LOWNDES SQUARE

APPROXIMATE GROSS INTERNAL FLOOR AREA 728 SQ.FT (67.6 SQ.M)



GROUND FLOOR



This floor plan has been defined by the RICS Code of Measurement. This floor plan and all others are for approximate representative purposes only and upon usage is agreed to as such by the client.
WWW: hdvirtualart.com | TEL: 0203 974 1567 | EMAIL: info@hdvirtualart.com

2 Cale Street
London
SW3 3QU
Tel: 020 73061615

Sales, Lettings & Property Management

residential.jll.co.uk

