



YELDHAM ROAD, W6

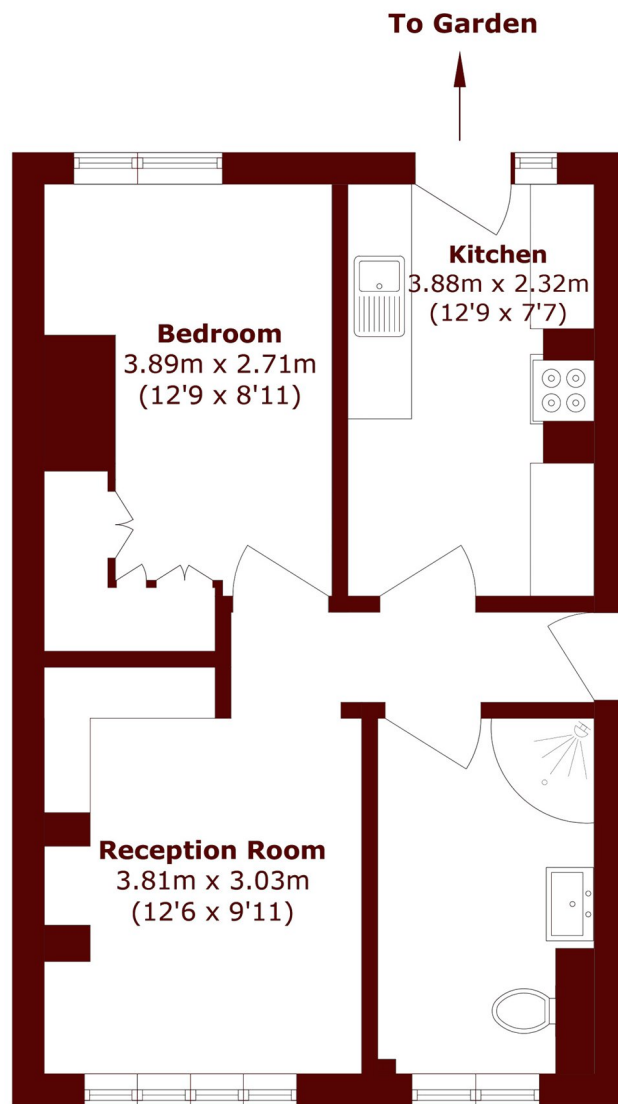
£400,000

A large one bedroom garden flat set on the ground floor of this purpose built block. The flat is well-presented throughout, with wooden shutters and built in wardrobes.

Ground floor
Private garden
Long lease

large double bedroom
High ceilings
Excellent transport links

STEP INSIDE YELDHAM ROAD



Total area (approx.): 43.4 sq. m (467.1 sq. ft)

Bishops Park
020 7993 9888

Energy Rating: D We aim to make our particulars both accurate and reliable. However, they are not guaranteed; nor do they form part of an offer or contract. If you require clarification on any points then please contact us, especially if you're traveling some distance to view. Please note that appliances and heating systems have not been tested and therefore no warranties can be given as to their good working order

**MARSH &
PARSONS**