



# ASPIRE

— TO MOVE —



## Park Street, Bath, BA1

Video and physical viewing available. Two bedroom ground floor flat located in Bath city centre. Available 21st July

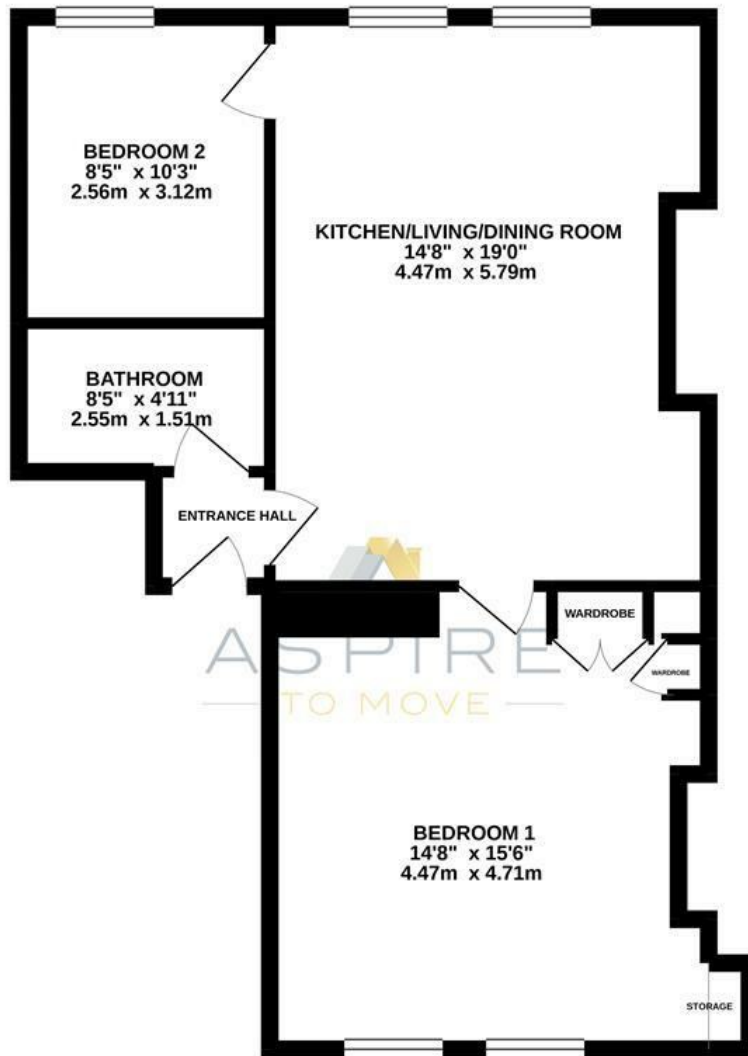
Park Street is located to the north of Bath city centre and provides excellent access to local amenities on St James Square 0.1 miles away. There is a bus stop 0.1 miles away and Royal Victoria Park is 0.2 miles away.

- Two double bedrooms
- Student property
- Available 21st July
- 12 month contract
- Furnished
- Video viewing available
- Council tax band C if applicable
- Holding deposit: £392

**£1,700 PCM**

# Floor Plans

GROUND FLOOR  
629 sq.ft. (58.4 sq.m.) approx.

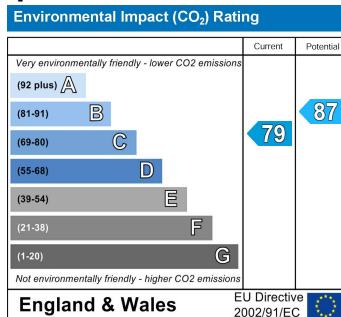
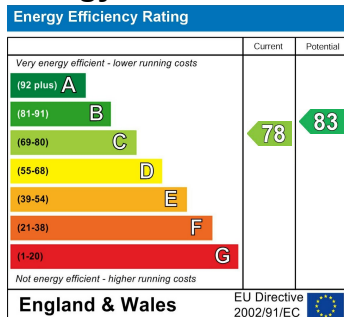


PARK STREET, BATH, BA1

TOTAL FLOOR AREA : 629 sq.ft. (58.4 sq.m.) approx.

Whilst every attempt has been made to ensure the accuracy of the floorplan contained here, measurements of doors, windows, rooms and any other items are approximate and no responsibility is taken for any error, omission or mis-statement. This plan is for illustrative purposes only and should be used as such by any prospective purchaser. The services, systems and appliances shown have not been tested and no guarantee as to their operability or efficiency can be given.  
Made with Metropix ©2020

## Energy Performance Graph



These particulars, whilst believed to be accurate are set out as a general outline only for guidance and do not constitute any part of an offer or contract. Intending purchasers should not rely on them as statements of representation of fact, but must satisfy themselves by inspection or otherwise as to their accuracy. No person in this firm's employment has the authority to make or give any representation or warranty in respect of the property.