



Sherland Road, TW1

£915,000

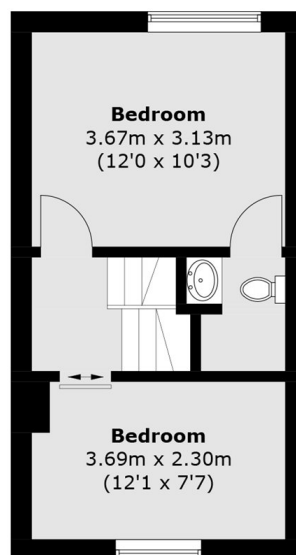
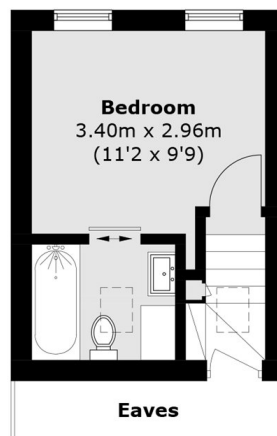
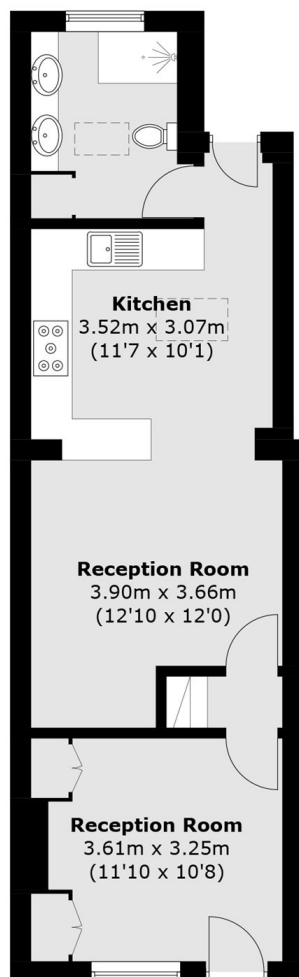
A beautifully presented period home offering the best of TW1 living blending original character with modern open-plan design in a highly sought-after village setting. The ground floor features a cosy front snug with wood burner and bespoke storage, leading to a stunning rear extension with large skylight, open-plan living, and a contemporary kitchen opening onto a private patio garden ideal for entertaining. Upstairs are three generous double bedrooms, including a recently completed principal suite designed as a peaceful retreat with an Ensuite bathroom.

Located just 0.2 miles from Twickenham Station, the property offers fast links to Vauxhall and Waterloo, excellent local schools, easy parking, and a strong community feel. Moments from the river, York House Gardens, and local amenities.

Features

- Three Double Bedrooms
- Period Property
- Exceptional Condition
- Central Location
- Extended Kitchen/Family Room
- Two Bathrooms

Sherland Road, Twickenham, TW1



Ground Floor **First Floor**

Total area (approx.): 90.2 sq. m (970.8 sq. ft)
(Excluding Eaves)