



Price
£260,000

Leasehold

1x  1x  1x 

**Iron House, Avebury
Avenue, Tonbridge,
Kent, TN9**

Wards
Helping you move forwards



Main features

- Private balcony
- Allocated parking space in the car park
- Walking distance to the station and High Street
- Ideal for first time buyers with the option to purchase 35% share
- Available chain free

Accommodation

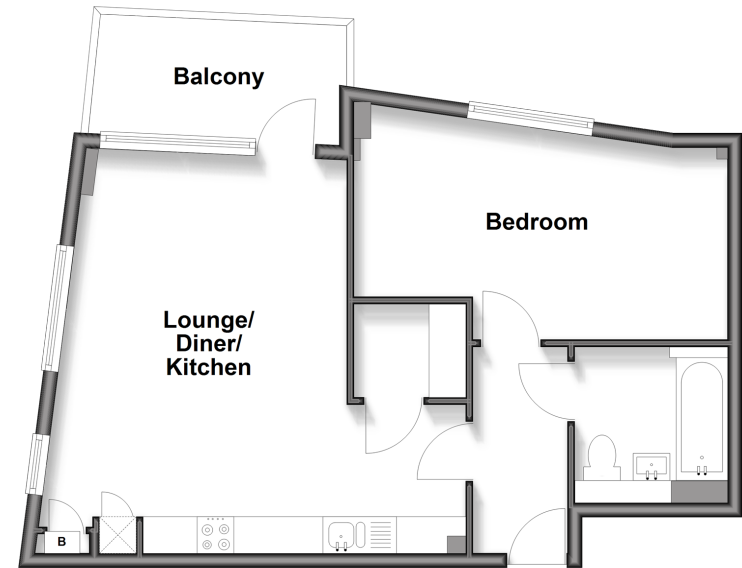
GROUND FLOOR

Hallway
 Lounge/Diner/Kitchen: 18'2 x 11'5 (5.54m x 3.48m)
 Balcony
 Bedroom: 16'3 x 8'4 (4.96m x 2.54m)
 Bathroom

OUTSIDE

Allocated Parking

Ground Floor
 Approx. 49.7 sq. metres (534.8 sq. feet)



Call Tonbridge - 01732 770755 ■ wardsofkent.co.uk

■ Legal advice should be taken to verify fixtures/fittings, planning, alterations and/or lease details

■ Appliances & services are untested, dimensions are approximate and floor plans are not to scale



14134175/20260108/MC/ER