



Pentecost Lane, Maidstone, Kent, ME15 8YF

Maidstone

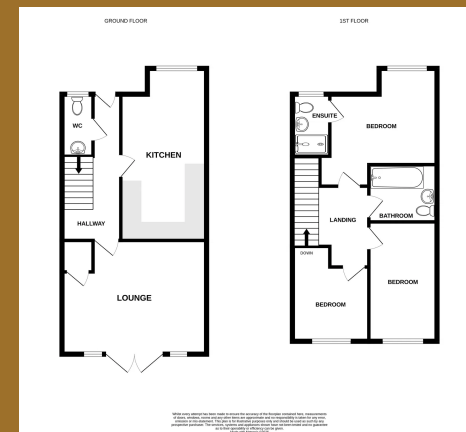
Offers Over
£375,000

This beautifully presented semi-detached family home is located in the highly desirable area of Bicknor Wood, near Bearsted, Maidstone, an ideal setting for families seeking a balance of green space, convenience, and community. With Mote Park just a short distance away, weekends can be spent enjoying long walks, picnics, and outdoor activities, while Maidstone town centre and the M20 are both easily accessible for shopping, schooling, and commuting.

The home is maintained to an exceptional standard throughout, offering a true "turn-key" opportunity where a family can move straight in and begin making memories from day one. The heart of the home is the spacious kitchen/diner, perfectly designed for family life and entertaining, whether it's busy weekday breakfasts, homework at the table, or hosting friends and relatives. The generous lounge provides a comfortable and relaxing space for the whole family and opens directly onto the rear garden, creating a seamless indoor-outdoor flow ideal for children to play safely while adults unwind. The garden also offers access to the garage and off-road parking, adding everyday practicality.

Upstairs, there are three well-proportioned bedrooms, offering flexible accommodation for growing families, home working, or guest space. The principal bedroom benefits from its own en-suite, while the remaining bedrooms are served by a modern family bathroom, ensuring comfort and convenience for everyone.

This is a home designed with family living in mind, combining space, location, and quality. If you are looking for a property where you can simply move in, settle down, and enjoy family life without the need for any immediate work, then this wonderful home is not to be missed.







Mark Ranger Property

07931 438 061

mark.ranger@exp.uk.com

<https://markranger.exp.uk.com/>