



RESIDENTIAL ESTATE AGENTS  
PROPERTY LETTING & MANAGING AGENTS  
VALUERS & PROPERTY CONSULTANTS  
CHARTERED SURVEYORS

**01722 336422**  
[www.hwwhite.co.uk](http://www.hwwhite.co.uk) WEB



**Tower Mews, St Marks Avenue**

**£1,500 PCM**

**15 Tower Mews, St Marks Avenue, Salisbury, Wilts, SP1 3DJ**



Energy Efficiency Rating		Current	Potential
Very energy efficient - lower running costs			
(92 plus) A			
(81-91) B			
(69-80) C			
(55-68) D		65	71
(39-54) E			
(21-38) F			
(1-20) G			
Not energy efficient - higher running costs			
England & Wales		EU Directive 2002/91/EC	

The house has just been refurbished with a new kitchen, new carpets and decoration. Situated in an established development of similarly styled town houses built in the late 1980's, No 15 has an entrance hall, a utility room with sink and plumbing for washing machine etc and a cloakroom/wc on the ground floor along with a single, integral garage accessible from the utility room. Stairs up to the first floor and a newly fitted, contemporary styled kitchen/breakfast room with an L-shape range of high and low level units incorporating a double electric oven, a gas hob and an integrated fridge/freezer and dishwasher. Spacious, first floor sitting room with double doors onto the balcony and a pleasant outlook over the rear garden. Further stairs up to the top floor landing with airing cupboard, bedroom one with an en-suite shower room, fitted wardrobes and a Juliet balcony. Double bedroom two and a second bathroom with a shower over the bath. To the rear is an enclosed rear garden with a patio area, lawn and pedestrian gate for rear access. To the front is an open plan front garden with paved parking for 2 cars in front of the garage. There is a relatively new gas boiler for central heating and hot water and the property is double glazed giving an overall EPC rating of D. UNFURNISHED.

A Note From the Whites Letting Team

Thank you for considering Whites as your letting agent. As a proud member of the Royal Institution of Chartered Surveyors (RICS), we strive to uphold its core values by providing a fair, efficient, and transparent service to all prospective tenants. Below, we outline how we manage property inquiries and applications to help set expectations and guide you through the letting application process.

To start the process of inquiring about one of our properties, please click the 'Request Further Details/Info' button on the property listing.

If you are inquiring through Rightmove, you will be asked to fill out a short form, which will be sent directly to us. If you are using our website or On The Market, we will receive your contact information and get back to you as soon as possible with a brief questionnaire to complete.

Once we receive your completed form or questionnaire, your inquiry will be registered with the relevant Property Manager. Please note that only those who complete this step will be considered to have formally inquired about the property.

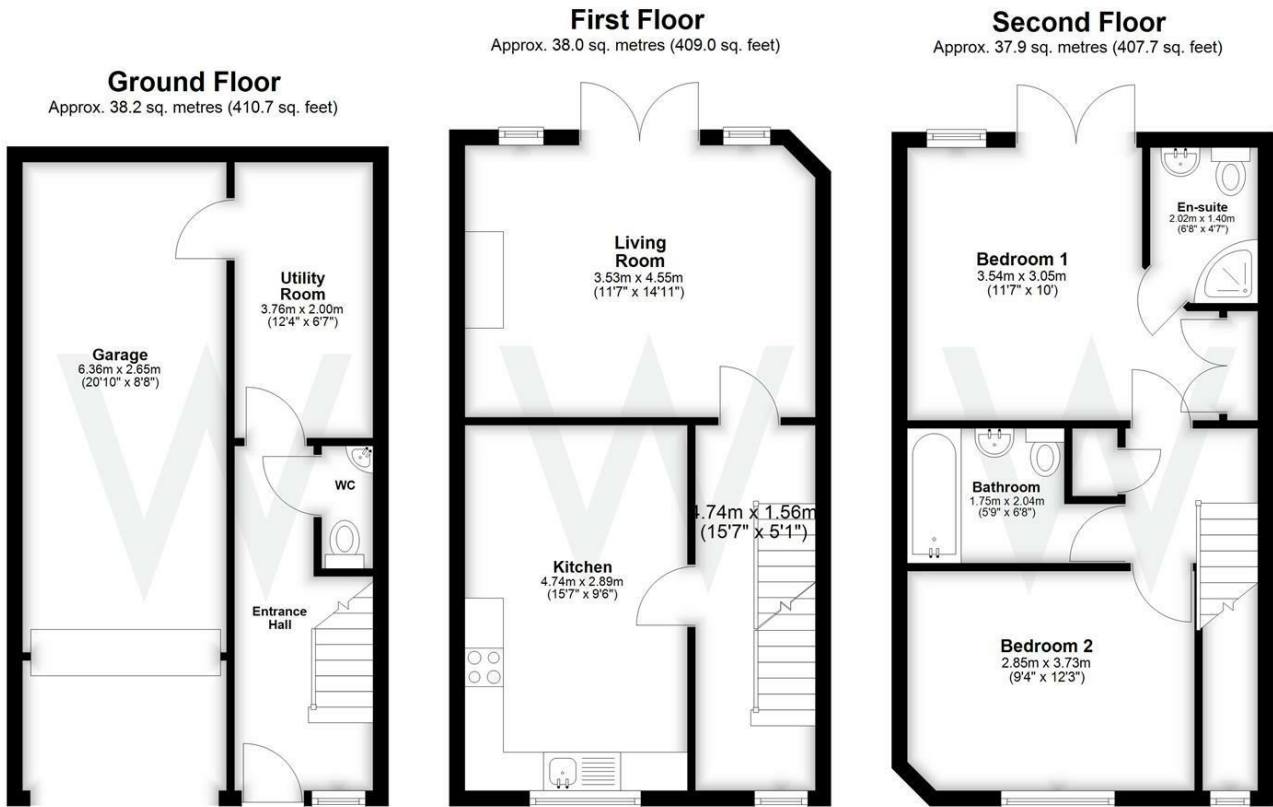
Due to the four for the best to up

of up to sur

Please be landlord, b

ith the

The availa



Total area: approx. 114.0 sq. metres (1227.4 sq. feet)



01722 336422

47 Castle Street, Salisbury SP1 3SP 01722 320600 FAX  
residential-sales@hwwhite.co.uk E.MAIL www.hwwhite.co.uk WEB