



**The Old Post Office Bobby Hill, Wattisfield Diss IP22 1NL**



**welcome to**

## **The Old Post Office Bobby Hill, Wattisfield Diss**

A two bedroom terraced cottage situated in a sought after village of Wattisfield. Benefits from a well appointed kitchen, underfloor heating throughout, shower room, two bedrooms and an offset garden.

### **Location**

Wattisfield is a small village located in the county of Suffolk, just off A143. The village is situated approximately 5 miles south-west of the town of Diss and is surrounded by beautiful countryside and is known for its peaceful and tranquil atmosphere. It is a approximately 3 miles from the sought after village of Botesdale which adjoins Rickingham. The villages have proved to have been a desirable location over the years, consisting of many period and attractive properties of different ages within the heart of the village. The villages offer an extensive range of amenities and facilities including health centre, boutique shops, small supermarket, public houses, schooling, church and good transport links. The busy market town of Diss is around 7 miles distant providing, amongst other things, a mainline rail station with commuter service to London Liverpool Street in around 90 minutes, making the area popular and convenient for commuters.

The town itself is essentially self-sufficient offering an excellent range of shops and services along with schools at Primary, High and Sixth Form level. Furthermore, a number of cultural activities take place throughout the year including Theatre, Classical Concerts and an Art Exhibition.

### **Accommodation**

#### **Kitchen / Lounge**

19' 10" x 10' 10" ( 6.05m x 3.30m )

Front door, dual aspect double glazed windows, engineered oak flooring, spiral staircase to first floor and underfloor heating. Open to fitted kitchen with wall and base units, stainless steel sink and drainer, one and a half bowl, wooden worktops, electric oven and hob with cooker hood, plumbing for washing machine and integrated fridge/freezer.

### **Shower Room**

Side aspect double glazed window, shower cubicle with fully plumbed shower, heated towel rail, low level flush wc and wash hand basin in vanity unit with added storage cupboards.

### **Landing**

Carpet and doors to;

### **Bedroom One**

10' 10" x 10' 2" ( 3.30m x 3.10m )

Dual aspect double glazed window, underfloor heating and carpet.

### **Bedroom Two**

7' 7" x 10' 11" ( 2.31m x 3.33m )

Side aspect double glazed window, underfloor heating, wall mounted boiler and carpet.

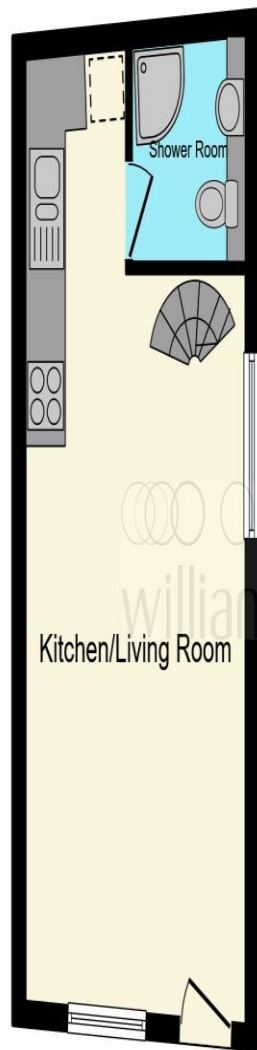
### **Outside**

Offset from the property and accessed by a pathway next to the adjoining property is an enclosed shingle garden.

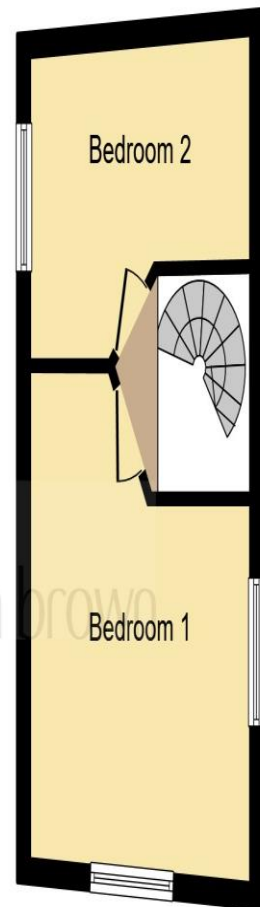
### **Services**

Mains Electricity  
Mains Water  
Mains Drainage

### **Council Tax Band: A**



**Ground Floor**



**First Floor**

This floor plan is for illustrative purposes only. It is not drawn to scale. Any measurements, floor areas (including any total floor area), openings and orientation are approximate. No details are guaranteed, they cannot be relied upon for any purpose and they do not form part of any agreement. No liability is taken for any error, omission or misstatement. A party must rely upon its own inspection(s). Powered by [www.focalagent.com](http://www.focalagent.com)



**welcome to**

**The Old Post Office Bobby Hill,  
Wattisfield Diss**

- **\*\*PERFECT FOR FIRST TIME BUYERS/INVESTORS\*\***
- Flint Cottage With Character Features
- Open Plan Kitchen/Lounge
- Updated & Modernised Throughout
- Ground Floor Shower Room

Tenure: Freehold EPC Rating: E  
Council Tax Band: A

offers in the region of  
**£190,000**



**view this property online** [williamhbrown.co.uk/Property/DSS111484](http://williamhbrown.co.uk/Property/DSS111484)



Property Ref:  
DSS111484 - 0003

1. MONEY LAUNDERING REGULATIONS Intending purchasers will be asked to produce identification documentation at a later stage and we would ask for your co-operation in order that there is no delay in agreeing the sale. 2. These particulars do not constitute part or all of an offer or contract. 3. The measurements indicated are supplied for guidance only and as such must be considered incorrect. Potential buyers are advised to recheck measurements before committing to any expense. 4. We have not tested any apparatus, equipment, fixtures or services and it is in the buyers interest to check the working condition of any appliances. 5. Where an EPC, or a Home Report (Scotland only) is held for this property, it is available for inspection at the branch by appointment. If you require a printed version of a Home Report, you will need to pay a reasonable production charge reflecting printing and other costs. 6. We are not able to offer an opinion either written or verbal on the content of these reports and this must be obtained from your legal representative. 7. Whilst we take care in preparing these reports, a buyer should ensure that his/her legal representative confirms as soon as possible all matters relating to title including the extent and boundaries of the property and other important matters before exchange of contracts.

William H Brown is a trading name of Sequence (UK) Limited which is registered in England and Wales under company number 4268443, Registered Office is Cumbria House, 16-20 Hockliffe Street, Leighton Buzzard, Bedfordshire, LU7 1GN. VAT Registration Number is 500 2481 05.



**william h brown**



**01379 644719**



[Diss@williamhbrown.co.uk](mailto:Diss@williamhbrown.co.uk)



1 Navire House Mere Street, DISS, Norfolk,  
IP22 4AG



**[williamhbrown.co.uk](http://williamhbrown.co.uk)**