



Doods Road, Reigate

Guide Price £325,000 - £350,000

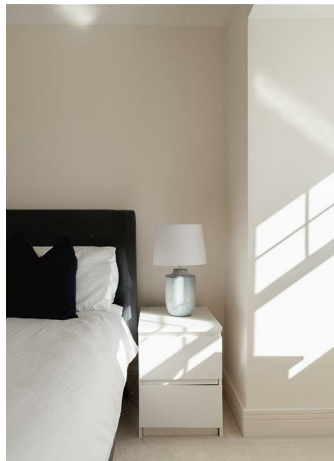




“

Conveniently located on a popular residential road, this two bedroom second floor apartment ticks all the boxes. Bright and spacious throughout it is ready to move straight in.

”



Guide Price £325,000 - £350,000

Located on one of Reigate's most sought after roads, this well-presented two double bedroom, two bathroom apartment is ideally suited to buyers looking for both convenience and comfort.

The property opens into a spacious entrance hall with built-in storage, leading through to a bright and airy open-plan living/dining room. A large bay window floods the space with natural light and enjoys attractive leafy views, a unique feature for such a central setting. The adjoining kitchen is well-appointed with a range of fitted units, along with integrated appliances, creating an ideal layout for both everyday living and entertaining.

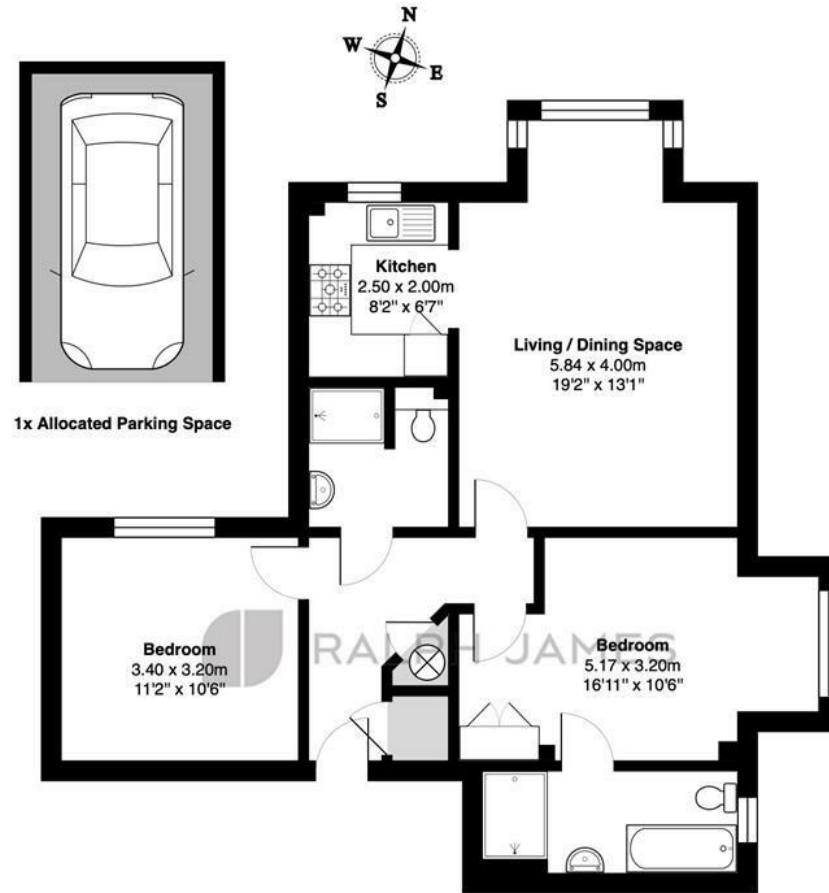
Both bedrooms are well-proportioned doubles, with the principal bedroom benefitting from an en-suite bathroom featuring both a separate bath and shower. A further bathroom serves the second bedroom and guests. The apartment is offered in excellent condition, having been recently redecorated throughout and fitted with new carpets. An allocated parking space is also included.

Reigate town centre is just a short stroll away, offering a vibrant mix of independent shops, cafés and restaurants, while the ever-popular Priory Park provides beautiful outdoor space close by. For commuters, Reigate and Redhill train stations are both walking distance away, offering direct services to London Victoria, London Bridge and Blackfriars.



Need to know

- Second floor, two bedroom apartment
- Bright and spacious open plan living
- En suite shower and separate bathroom
- Large hallway with ample storage space
- Modern kitchen with integrated appliances
- Two well proportioned double bedrooms
- An allocated residents parking space
- Popular central Reigate location
- Walking distance to train station and Reigate town centre, shops and amenities
- Share of freehold



Second Floor

Hillview, 97 Doods Road, Reigate

Total Area: 71.3 m² ... 767 ft² (excluding 1x allocated parking space)

FOR ILLUSTRATIVE PURPOSES ONLY.

Whilst every attempt has been made to ensure the accuracy of the floor plan shown, all measurements, positioning, fixtures, features, fittings and any other data shown are an approximate interpretation for illustrative purposes only and are not to scale.

No responsibility is taken for any error, omission, miss-statement or use of data shown.

The above statement applies to both 'Still Moving London LTD' and the Company or individual displaying this floor plan.

Unauthorised reproduction prohibited.

© Still Moving London LTD (www.stillmoving.london)

 RALPH JAMES

Interested?

reigate@ralphjames.co.uk
01737 333677

ralphjames.co.uk