



Jerningham Road, SE14

£525,000

A beautifully presented split-level, two-bedroom Victorian apartment, ideally situated in the heart of the sought-after Telegraph Hill Conservation Area. Occupying the ground floors of an attractive period building, this charming home is full of character and boasts a wealth of original period features, including high ceilings, large sash-style windows, and elegant architectural details.

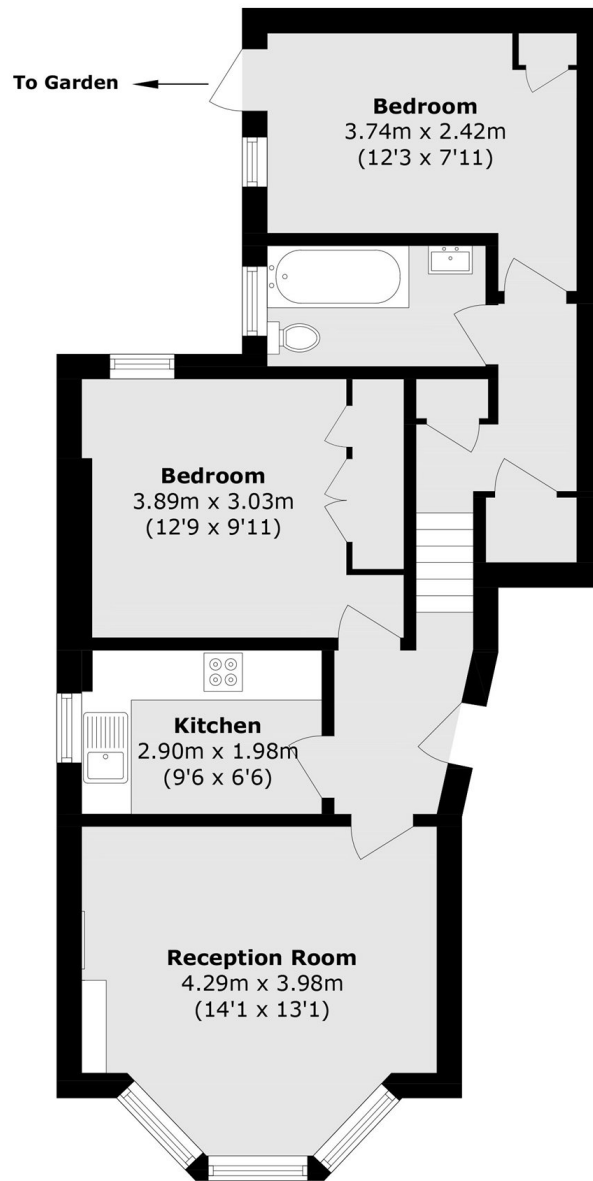
Arranged over two levels, the property offers well-proportioned accommodation with a spacious and versatile layout, creating a wonderful balance between character and modern living. Further benefits include direct access to its own private section of the rear garden, providing a peaceful outdoor space ideal for relaxing or entertaining.

Perfectly positioned for commuters, the apartment enjoys excellent transport links, with New Cross Gate, Nunhead and Queens Road Peckham stations all within easy reach, offering convenient connections across London. The vibrant local cafés, parks and amenities of Telegraph Hill further enhance the appeal of this exceptional home.

Features

- Victorian Conversion
- Two Bedrooms
- Split Level
- Large Study Room
- Bright And Airy Reception
- Own Section Of Garden
- Situated Within Telegraph Hill

Jerningham Road, London, SE14



Total area (approx.): 58.5 sq. m (629.6 sq. ft)