



## Occupation Lane, SE18

£425,000

Dexters are excited to bring to the market this recently refurbished two bedroom bungalow quietly tucked away on Occupation Lane, a quiet road in the Shooters Hill area. 'High Noon' is a property that provides a rare combination of privacy, character and practicality, with a peaceful garden, two side access points and a detached outbuilding with light and electricity.

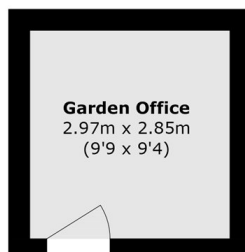
The accommodation comprises a bright reception room to the front, leading through to a modern fitted kitchen with direct access to the garden. There are two well-proportioned bedrooms and a contemporary walk in shower room and bathroom while the charming half stable-style front door adds plenty of character on arrival. To the rear, the garden offers excellent outside space and benefits from side access on both sides of the property, with the outbuilding ideal as a home office, gym or workshop. Moreover, this property is offered chain free.

Occupation Lane is a quiet and secluded setting, conveniently located for the open spaces of Woolwich Common and within easy reach of Woolwich Arsenal Station for the Elizabeth Line, DLR and mainline services, along with the shops, cafés and amenities of Woolwich Town Centre

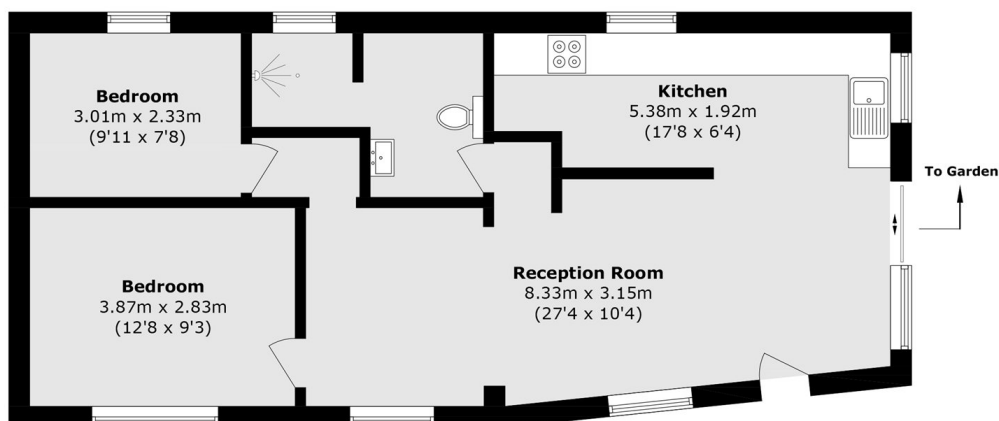
### Features

Cottage Bungalow  
Two Bedrooms  
Annex  
No Onward Chain  
Quite and Residential Road  
Freehold Tenure

# Occupation Lane, London, SE18



**Ground Floor**



**Ground Floor**

Total area (approx.): 63.6 sq. m (684.5 sq. ft)  
Outbuilding area (approx.): 8.4 sq. m (90.4 sq. ft)