



Pembridge Gardens, W2

£2,250 Per calendar month

Dexters



Pembridge Gardens, W2

A stylish and bright one bedroom apartment on the third floor of a Victorian conversion, offering excellent storage throughout and a fully integrated separate kitchen, located in the heart of Notting Hill.

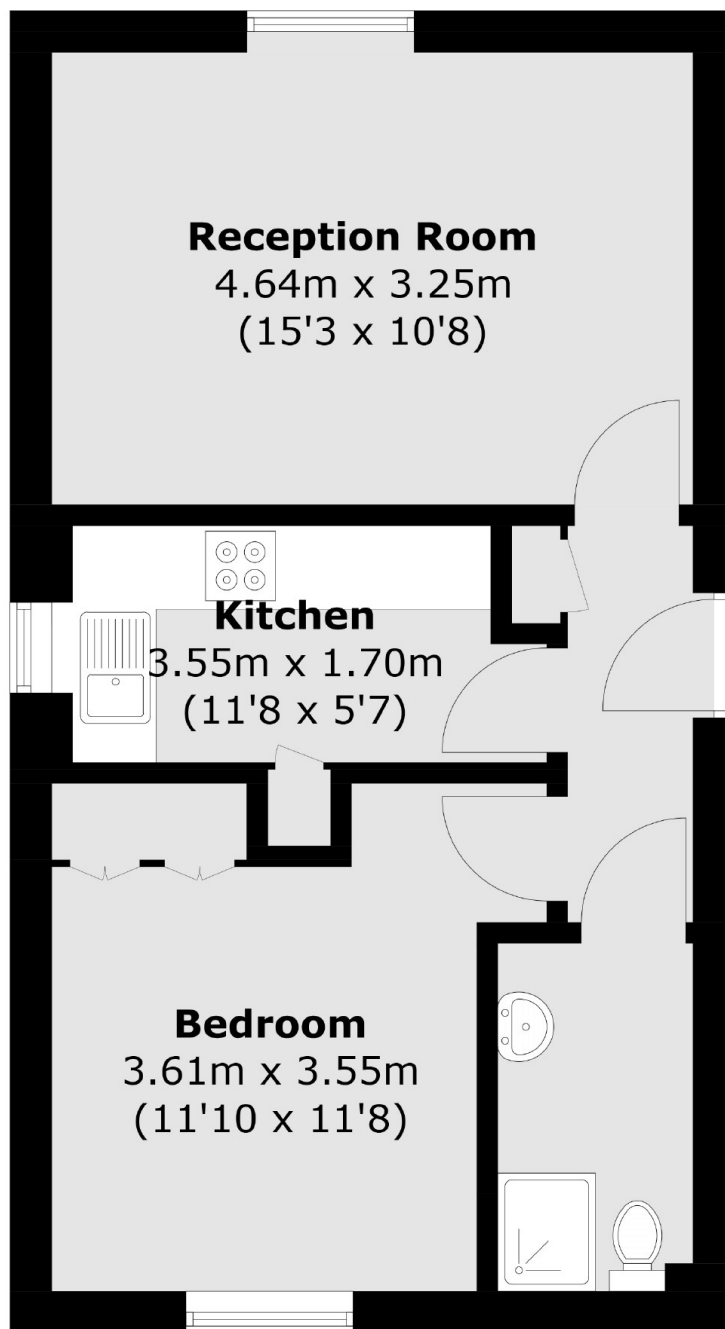
Pembridge Gardens is in a highly sought after location in Notting Hill, with convenient access to Notting Hill Gate Underground and a wealth of local shops, pubs and restaurants. Hyde Park and fashionable Portobello Road are also within walking distance as well.

Features

- One Bedroom
- Bright & Spacious
- Separate Kitchen
- Plenty Of Storage
- Top Floor Flat
- Notting Hill Gate Underground



Pembridge Gardens,
London, W2



Total area (approx.): 41.2 sq. m (443.5 sq. ft)