

Avenue Elmers, KT6

£475,000

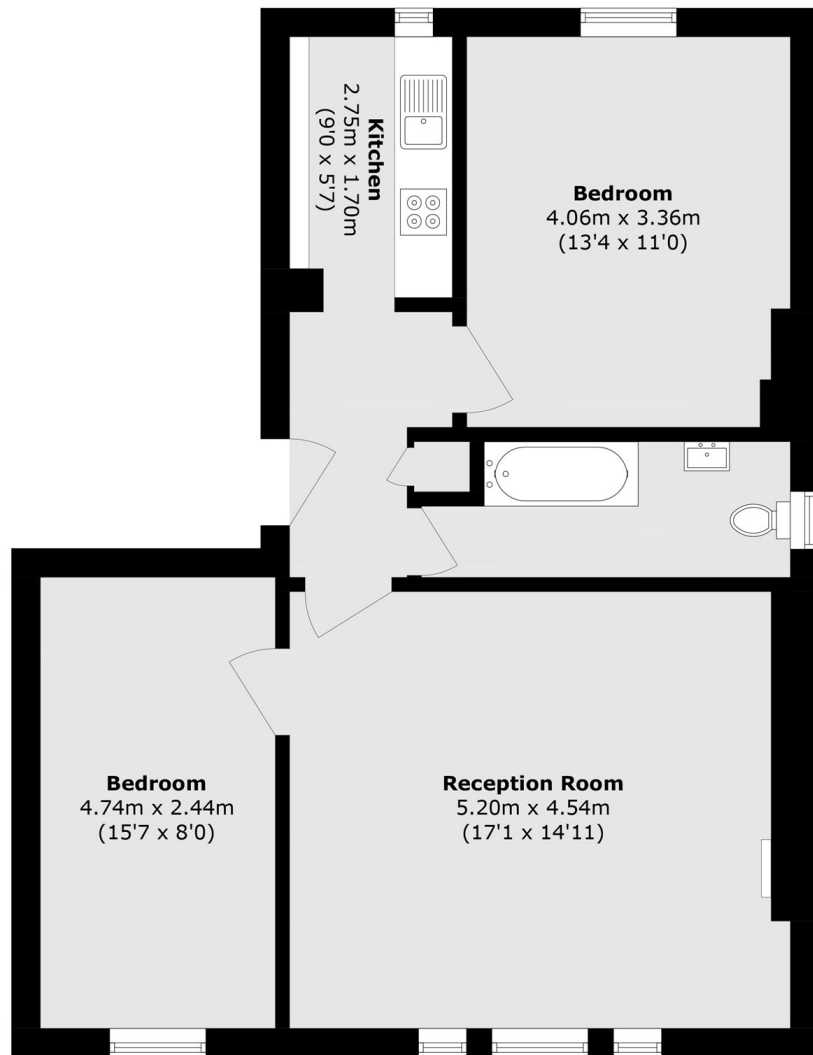
A newly refurbished top floor apartment set within an imposing double fronted Victorian building. The accommodation has been renovated to a high standard throughout and offers two bright and well appointed double bedrooms, a stylish bathroom, smart kitchen and a larger than average reception room with far reaching views. Further benefits include a communal garden, a share of the freehold and no onward chain.

Avenue Elmers is approximately half a mile away from everything you need, including the River Thames, the desirable Maple Road, Surbiton high street and the mainline train station with direct trains to London Waterloo in as fast as 16 minutes.

Features

- Two Double Bedroom Flat
- Fully Refurbished
- Luxury Feel
- Share Of Freehold
- No Onward Chain
- Communal Gardens

Avenue Elmers, Surbiton, KT6



Third Floor

Total area (approx.): 66.2 sq. m (712.6 sq. ft)