



Let **UK** Home

2 Bedrooms

E15 4QF

Located in London

**£2,050 Per Month**



[info@letukhome.co.uk](mailto:info@letukhome.co.uk)

<https://www.letukhome.co.uk/>

01795 358 886



## Marriott Road, London, E15



Let UK Home are excited to offer this stunning two-bedroom one-bathroom house ideally situated in the heart of Stratford, E15.

This two-storey property features a ground floor and a first floor, plus an external patio and standalone storage room with a built-in BBQ spot. On the ground level lies an open-plan living, dining and kitchen zone: a spacious living room connects to a dining area, adjacent to a fitted kitchen, with a utility space and main staircase also on this floor, leading out to the large private patio and separate external storage unit. Upstairs on the first floor are two double bedrooms, a compact family bathroom, and a small landing area next to the staircase.

The apartment enjoys an excellent location within walking distance of Stratford High Street DLR and Stratford Station, one of East London's major transport hubs. With access to the Elizabeth Line, Central Line, Jubilee Line, DLR, London Overground and National Rail, residents can travel quickly to Liverpool Street, Canary Wharf, Tottenham Court Road, Paddington and Heathrow Airport.

The area offers excellent educational opportunities, with Carpenters Primary School, West Ham Church Primary School and Stratford Manor Primary School & Nursery nearby, together with well-regarded secondary schools including School 21, Harris Academy Chobham and Stratford School Academy. Leading universities such as UEL, UCL, LSE and King's College London are also easily accessible.

Situated in the heart of Stratford, the property benefits from an excellent range of local amenities. Westfield Stratford City, Stratford Broadway, supermarkets, cafés, restaurants, gyms and healthcare facilities are all within easy reach. Residents can also enjoy the nearby Queen Elizabeth Olympic Park, London Stadium and London Aquatics Centre, offering an ideal balance of convenience and lifestyle.

- House
- Stratford
- Stratford Broadway
- London Stadium

- Walk to Stratford High Street DLR and Stratford
- Westfield Stratford City
- Queen Elizabeth Olympic Park
- EPC Rating: C



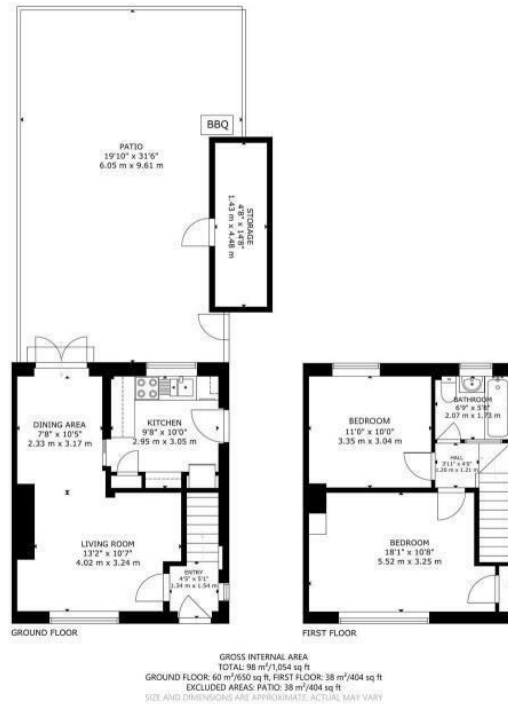


Let **UK** Home

3F 2 Eastbourne Terrace  
 Paddington  
 London  
 W2 6LG

info@letukhome.co.uk

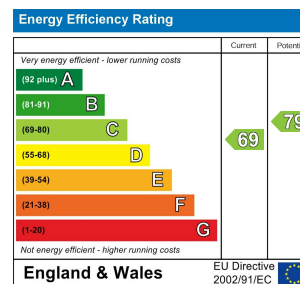
01795 358 886



**Council Tax Band: C**

**Local Authority:**

Agents Note: Whilst every care has been taken to prepare these particulars, they are for guidance purposes only. All measurements are approximate and are for general guidance purposes only and whilst every care has been taken to ensure their accuracy, they should not be relied upon and potential buyers/tenants are advised to recheck the measurements.



<https://www.letukhome.co.uk/>