



HOME 37

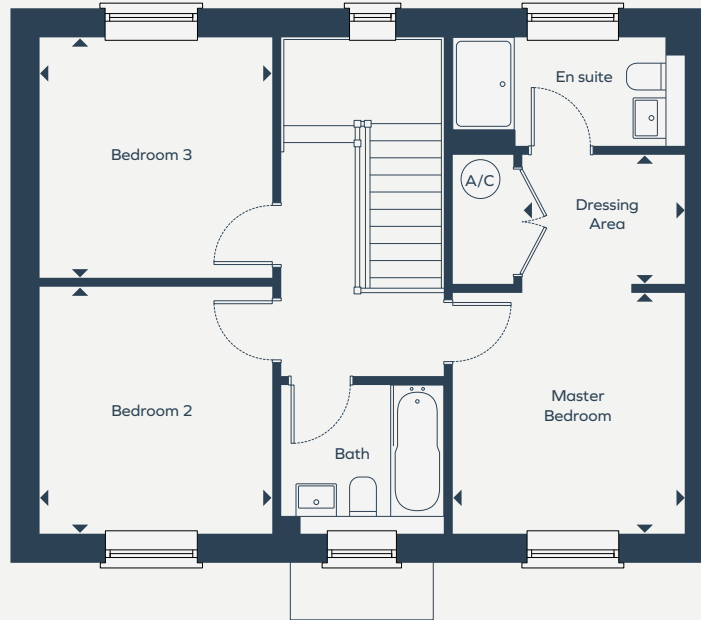
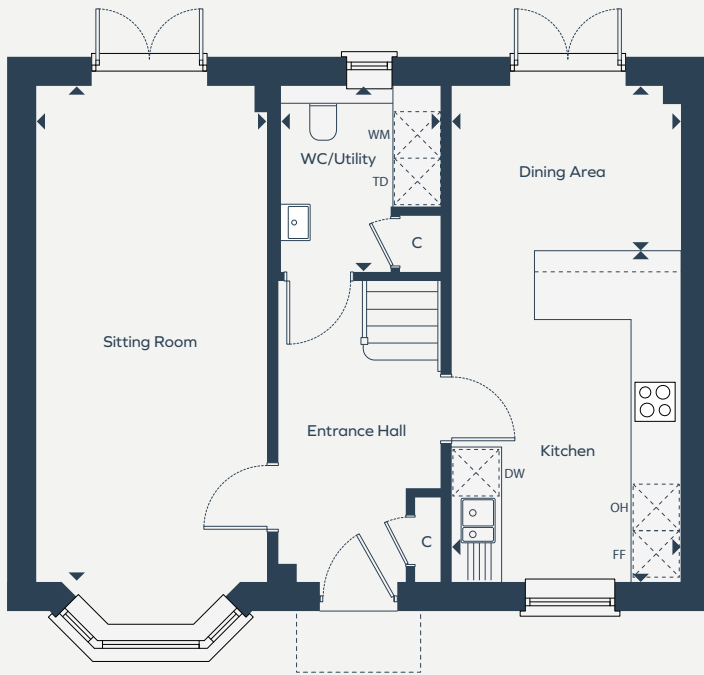
A three bedroom detached home with garage
and driveway parking for two vehicles.

MOUNTBATTEN PARK
— NORTH BADDESLEY —

HOME 37

111.70 SQ M | 1202 SQ FT

A three bedroom detached home with garage and driveway parking for two vehicles.



GROUND FLOOR

Kitchen / Dining Area

2.9m x 6.46m 9' 8" x 21' 2"

Utility / Cloakroom

2.07m x 2.42m 6' 8" x 7' 9"

Sitting Room

3.00m x 6.46m 9' 8" x 21' 2"

FIRST FLOOR

Master Bedroom

3.01m x 3.13m 9' 9" x 10' 3"

Dressing Area

2.11m x 1.68m 6' 9" x 5' 5"

Bedroom 2

3.03m x 3.13m 9' 9" x 10' 3"

Bedroom 3

3.03m x 3.21m 9' 9" x 10' 5"

36 Wilfrid Street, North Baddesley, Southampton, SO52 9BN.

01794 223259 | mountbattenpark@morrishomes.co.uk | morrishomes.co.uk

The items within this specification are for guidance only and may be substituted at any time. Floorplans shown are for approximate measurements only. Exact layout and sizes may vary. All measurements may vary within a tolerance of 5%. The information in this document is indicative and is intended to act as a guide only as to the finished product. Accordingly, due to our policy of continuous improvement, the finished product may vary from the information provided. These particulars should not be relied upon as accurately describing any of the specific matters described by any order under the Unfair Trading Regulations 2008 (CPRs). This information does not constitute a contract, or warranty. The dimensions given on plans are subject to minor variations and are not intended to be used for carpet sizes, appliance sizes or items of furniture. Please check with a member of the Morrish Homes team for the latest information. Computer Generated Images (CGIs) are indicative and intended for guidance only. Correct at time of going to print.