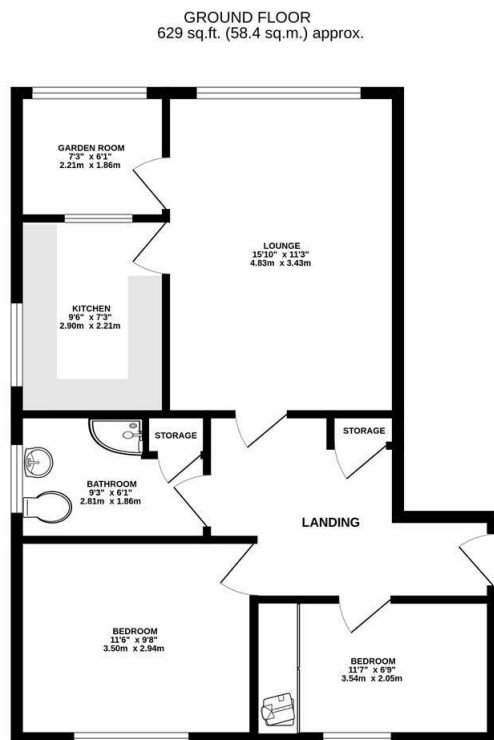




Keith  
Ashton

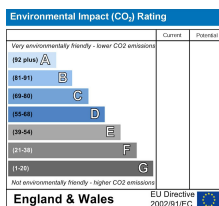
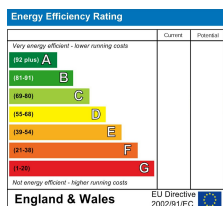
Lorne Road, Warley  
Brentwood





TOTAL FLOOR AREA: 629 sq.ft. (58.4 sq.m.) approx.  
Measurements are approximate. Not to scale. Illustrative purposes only.  
Made with Metagen 2023

£160,000



#### SERVICES:

Local Authority: Brentwood  
Council tax band: C  
Post code: CM14 5HH

#### VIEWING:

Strictly by prior arrangement with Keith Ashton Estate Agents



#### 11 Beech Spinney Lorne Road, Warley, Brentwood, CM14 5HH

Designed for the over 60's, Beech Spinney is a lovely development of retirement apartments, located just off of Warley Hill, within close proximity of local amenities and just a short distance from Brentwood's Main High Street and local parks.

Located on the top floor, this two bedroom apartment is one of the larger designs and provides an inviting landing, with doors leading to all main rooms. A particular feature is its lounge/diner, with adjoining kitchen, plus an enclosed garden room overlooking the surrounding woodland and well tended communal gardens.

Beech Spinney is warden assisted, for peace of mind, and for those wishing to get involved socially, offers unrestricted access to the resident's lounge and kitchen area. For those with overnight guests, there is the use of a private suite when available. Surrounded by well-maintained gardens and communal grounds, Beech Spinney also offers residents and visitors parking.

#### OPENING HOURS:

Monday to Friday: 8.45AM - 6.30PM | Saturdays: 9AM - 5.30PM | Sundays: 10AM - 2PM

#### MORTGAGE INFORMATION:

We offer the additional facility of an in-house Independent Financial Adviser who will access all mortgage lenders with the purpose of providing you with the benefit of choice. For quotations or comparables please call 01277 260858 or visit our interactive website at [www.mortgagebusiness.net](http://www.mortgagebusiness.net)



We the Agent have not tested any apparatus, fittings or services for this property. The plot size is intended merely as a guide and has not been officially measured or verified by the Agent. Photographs are for illustration only and may depict items which are not for sale or included in the sale of the property. As part of the service we offer we may recommend ancillary services to you which we believe may help you with your property transaction. We wish to make you aware, that should you decide to use these services we will receive a referral fee. For full and detailed information please visit 'terms and conditions' on our website [www.keithashton.co.uk](http://www.keithashton.co.uk)

Brentwood  
Tel. 01277 260858

Village Office  
Tel. 01277 375757

Lettings Office  
Tel. 01277 202200

Explore more @ [www.keithashton.co.uk](http://www.keithashton.co.uk)

