



Guide Price

£475,000

Freehold

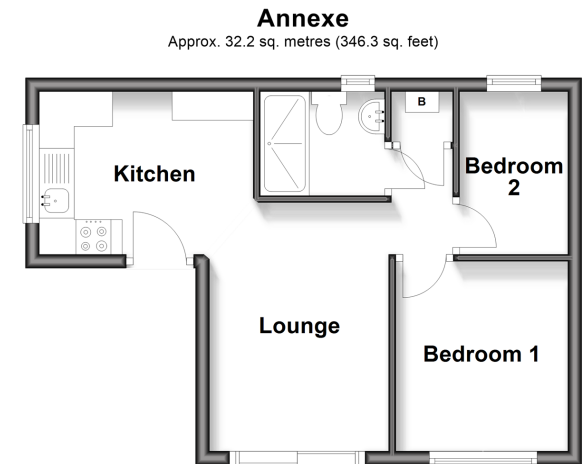
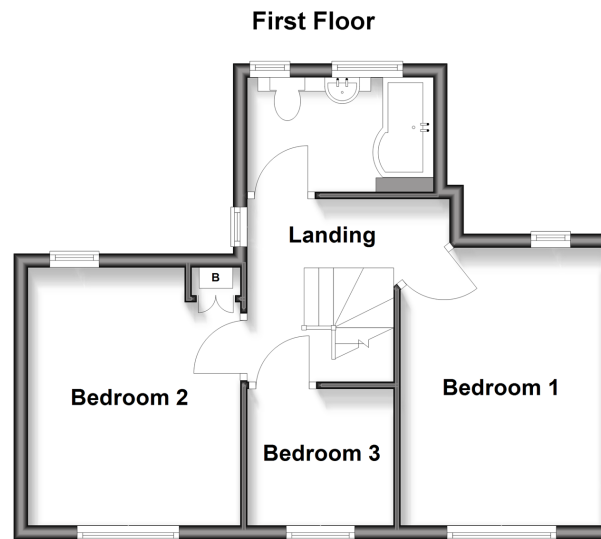
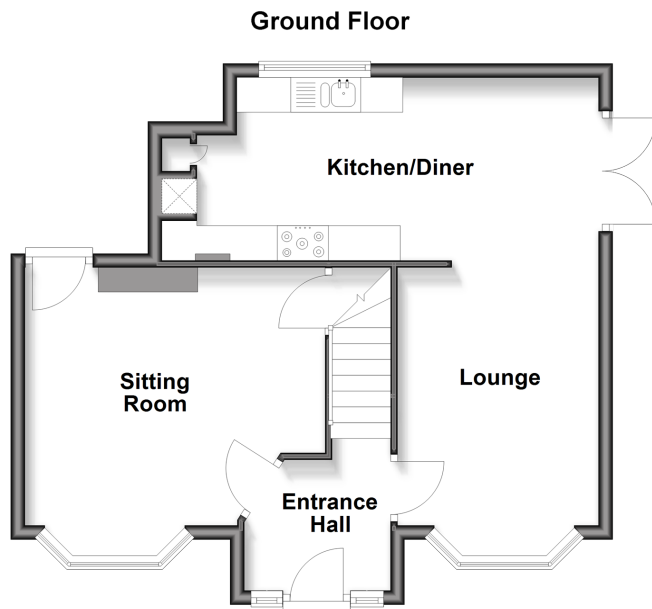
3x  1x  1x 

**High View Avenue,
Herne Bay, Kent, CT6**

OVER 60?

Secure this property
for up to **59% less!**

Wards
Helping you move forwards



Accommodation

GROUND FLOOR

Entrance Hall
 Lounge: 14'5 x 12'7 (4.40m x 3.84m)
 Sitting Room: 12'3 x 9'2 (3.74m x 2.80m)
 Kitchen/Diner: 20'11 x 8'8 (6.38m x 2.64m)

FIRST FLOOR

Landing
 Bedroom 1: 12'8 x 9'10 (3.86m x 3.00m)
 Bedroom 2: 12'6 x 9'2 (3.81m x 2.80m)
 Bedroom 3: 7'4 x 6'5 (2.24m x 1.96m)
 Bathroom

ANNEXE

Kitchen: 10'1 x 7'7 (3.08m x 2.31m)
 Lounge: 11'8 x 8'3 (3.56m x 2.52m)
 Bedroom 1: 9'0 x 7'11 (2.75m x 2.41m)
 Bedroom 2: 7'3 x 5'1 (2.21m x 1.55m)
 Shower Room

OUTSIDE

Unrestricted Parking
 Front Garden
 Rear Garden



Main features

- Stunning coastal setting with views
- Beautiful 1930's home, modern styling
- Versatile multi generational living accommodation
- Open plan living
- Annexe creates 4th bedroom and study area



Nearest Schools

Primary Schools: Hampton Primary 0.4 miles, Briary Primary 0.9 miles, Herne Bay Junior School 1.2 miles

Secondary Schools: Herne Bay High School 0.8 miles, The Whitstable School 3.0 miles, Spires Academy 4.4 miles

Transport Information

Train Stations: Herne Bay 0.8 miles, Chestfield & Swalecliffe 1.6 miles, Whitstable 2.9 miles

Address

High View Avenue, Herne Bay, Kent, CT6

Directions

For directions to this property please contact us.



Wards
Helping you move forwards

Call Herne Bay Branch 01227 361226 ■ wardsof Kent.co.uk



Unable to display material information. Please check with the branch for material information details for this property



11238894/20260422/FW/GG