



REGENT  
ESTATES

# THE PARK, WATER END, HEMEL HEMPSTEAD

£325,000 Freehold

---

## ACCOMMODATION

A charming Grade II listed, semi-detached cottage, beautifully positioned in the picturesque hamlet of Water End within the prestigious Gaddesden Estate.

Rich in period character, the property showcases exposed timber beams, delightful brickwork, and a warm, traditional ambience throughout. Generously proportioned and full of rustic charm, it offers an idyllic countryside lifestyle with modern comforts.

The cottage benefits from oil-fired central heating, private driveway parking, a large and mature rear garden, and far-reaching views across stunning open countryside. The property is offered to the market for the first time, with no upper chain.

EPC Rating: F | Council Tax Band: D

Accommodation . Entrance hall . Living room . Kitchen . Family bathroom. Double bedroom . Study

What three words - [///public.mini.area](#)

## LOCATION

## OUTSIDE

## IMPORTANT NOTICE

1. These sales particulars have been prepared from information supplied by the vendors and information collated by Regent Estates.
2. Confirmation has been sought from the vendors to confirm these particulars accuracy.
3. All measurements given have a tolerance of 3" in accordance with RICS Code of Measuring Practice.
4. None of these appliances, plumbing or electrics mentioned within these particulars have been tested by ourselves, prospective purchasers are urged to check their condition before entering in to purchase.

## VIEWING

Strictly by appointment through Regent Estates.

01442 877878  
141-143 High Street, Berkhamsted, Herts,  
HP4 3HH

Email: [info@regent-estates.com](mailto:info@regent-estates.com)  
[www.regent-estates.com](http://www.regent-estates.com)

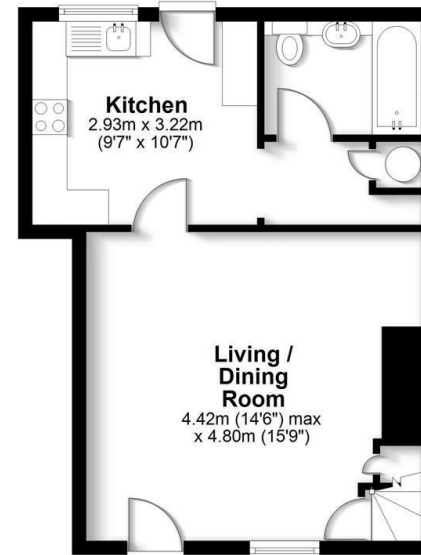






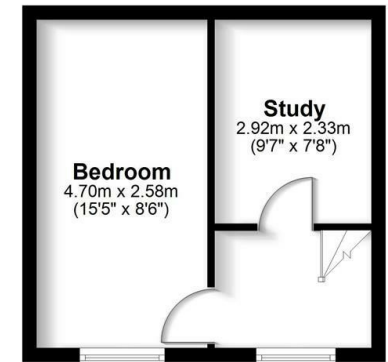
**Ground Floor**

Approx. 38.0 sq. metres (408.7 sq. feet)



**First Floor**

Approx. 23.5 sq. metres (253.4 sq. feet)



**Total area: approx. 61.5 sq. metres (662.2 sq. feet)**

FOR ILLUSTRATIVE PURPOSES ONLY - NOT TO SCALE  
 The position and size of doors, windows, appliances and other features are approximate only. Total area includes garages and outbuildings - Unauthorised reproduction prohibited.  
 Plan produced using PlanUp.



**REGENT  
ESTATES**

TELEPHONE: 01442 877878  
 141-143 High Street, Berkhamsted,  
 Herts, HP4 3HH  
 Email: info@regent-estates.com  
 www.regent-estates.com