



## Rainbow Avenue, E14

£923 Per week

An exceptional three-bedroom townhouse set along the river in Canary Wharf. Comprising all-double bedrooms, two bathrooms, private courtyard, balcony, off-street parking and use of an integral garage.

Rainbow Avenue is located 0.5 miles from Island Gardens DLR, plus a 20-minute walk along the Thames Path to the pleasant markets and amenities of Greenwich.

### Features

Three Storey Townhouse  
Three Double Bedrooms  
Two Bathrooms & WC  
Private Courtyard & Balcony  
Contemporary Interior  
Vehicle Parking & Garage



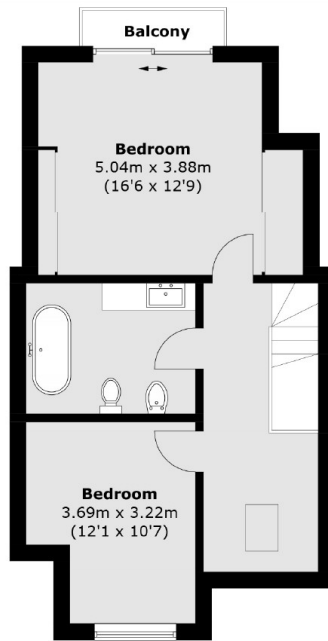
## Rainbow Avenue, E14

The residence spans three storeys and is well-proportioned throughout, ensuring plenty of desirable spaces. The ground floor offers an ultra-sleek kitchen/diner with sliding doors onto the private courtyard garden overlooking the Thames, in addition to internal access to the garage and a WC.

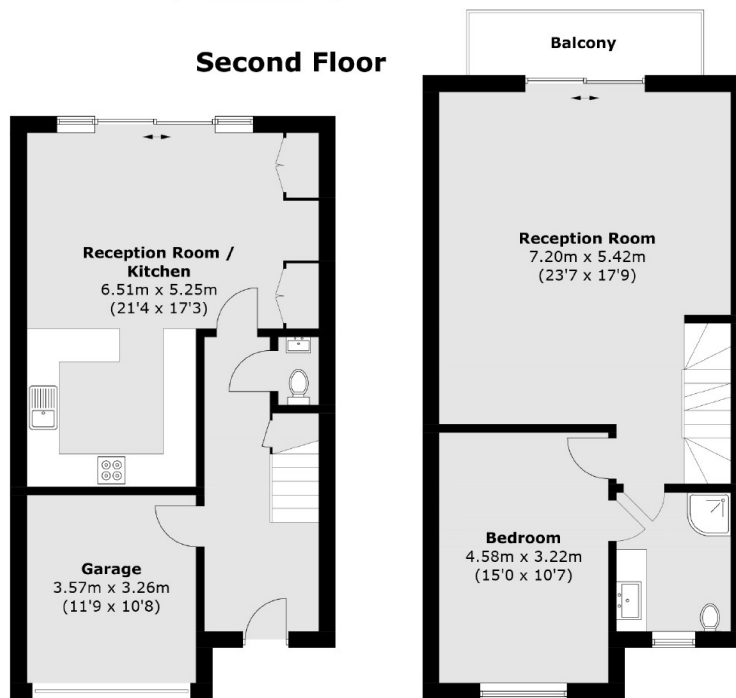
The upper two floors host three large double bedrooms with the master boasting views of the water and fitted storage, a bright and airy living complete with dedicated reading nook, and two contemporary bathrooms suites.



# Rainbow Avenue, London, E14



**Second Floor**



**Ground Floor**

**First Floor**

Total area (approx.): 157.4 sq. m (1,694.1 sq. ft)  
Balcony: 6.6 sq. m (71.0 sq. ft)