

Somerford Close

Pinner • Middlesex • HA5 2LS

PCM: £1,800 PCM



coopers
est 1986

We are delighted to present this SPACIOUS two bedroom GROUND FLOOR maisonette located in Pinner. This property offers AMPLE LIVING SPACE and is positioned only a SHORT DISTANCE to Northwood Hills Station and Pinner High Street. This family home offers; Spacious Lounge, TWO good sized bedroom and fitted kitchen. Other benefits include; WELL MAINTAINED REAR PRIVATE GARDEN and gas central heating.

Available in July and offered unfurnished

Local authority: London Borough of Hillingdon
Council Tax: Band C

Ground floor

Spacious bedrooms

Gas central heating

Quiet residential road

Street parking

Private garden

Close to Northwood Hills Station

Modern kitchen

Unfurnished

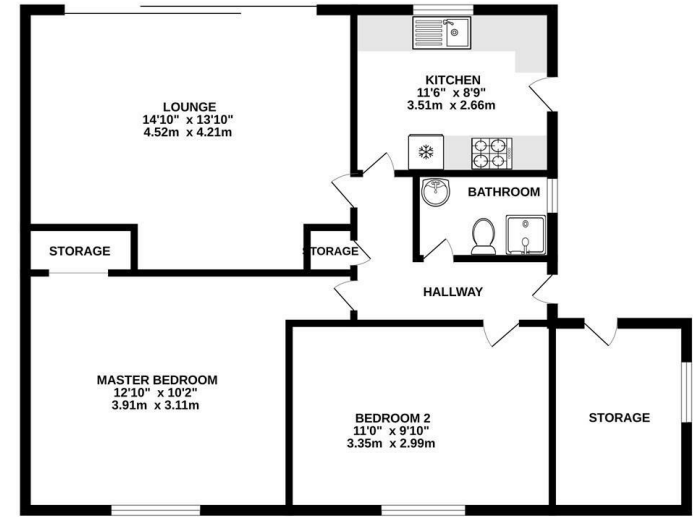
Available in July

Available Date

11th July 2026



GROUND FLOOR
689 sq.ft. (64.0 sq.m.) approx.



TOTAL FLOOR AREA: 689 sq.ft. (64.0 sq.m.) approx.
Whilst every attempt has been made to ensure the accuracy of the foregoing contained here, measurements of doors, windows, floors and any other items are approximate and the responsibility is placed on any prospective purchaser. The services, systems and appliances shown have not been tested and no guarantee as to their operability or efficiency can be given.
Made with Letbricks ©2023



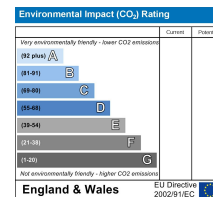
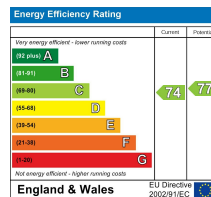
coopers
est 1986

0208 017 6000

18 Bridge Street, Pinner,
Middlesex, HA5 3JF

pinner@coopersresidential.co.uk

CoopersResidential.co.uk



Important Notice: These particulars, whilst believed to be accurate are set out as a general outline only for guidance and do not constitute any part of an offer or contract. Intending purchasers should not rely on them as statements or representation of fact, but must satisfy themselves by inspection or otherwise has the authority to make or give any representation or warranty in respect of the property.