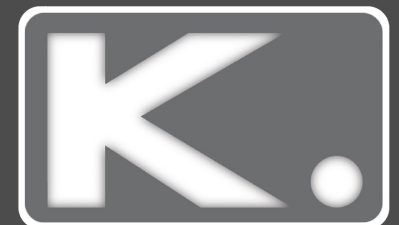


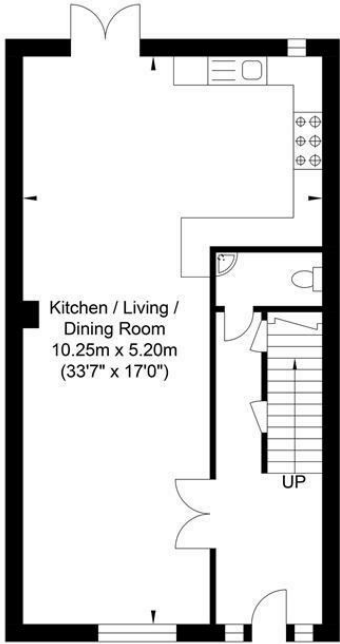


**3 Bed
House - Terraced
located
in Ditchling Rise**

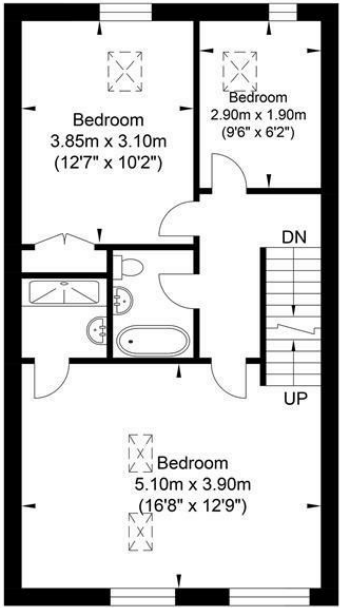
Asking Price £600,000



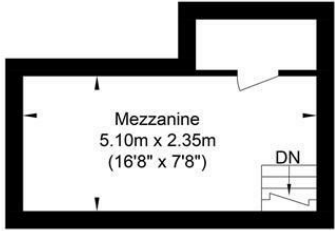
Ditchling Rise, Brighton



Ground Floor
Approximate Floor Area
573.71 sq ft
(53.30 sq m)



First Floor
Approximate Floor Area
551.43 sq ft
(51.23 sq m)



Second Floor
Approximate Floor Area
151.23 sq ft
(14.05 sq m)



Approximate Gross Internal Area = 118.58 sq m / 1276.38 sq ft
Illustration for identification purposes only, measurements are approximate, not to scale.

DIRECTIONS

CONTACT

Kendrick Property Services - Brighton
10-12 Lewes Road
Brighton
East Sussex
BN2 3HP

E:
sales@kendrickpropertyservices.co.uk
T: 01273 600162
www.kendrickpropertyservices.co.uk

