



Churchill Gardens, SW1V

£600 Per week

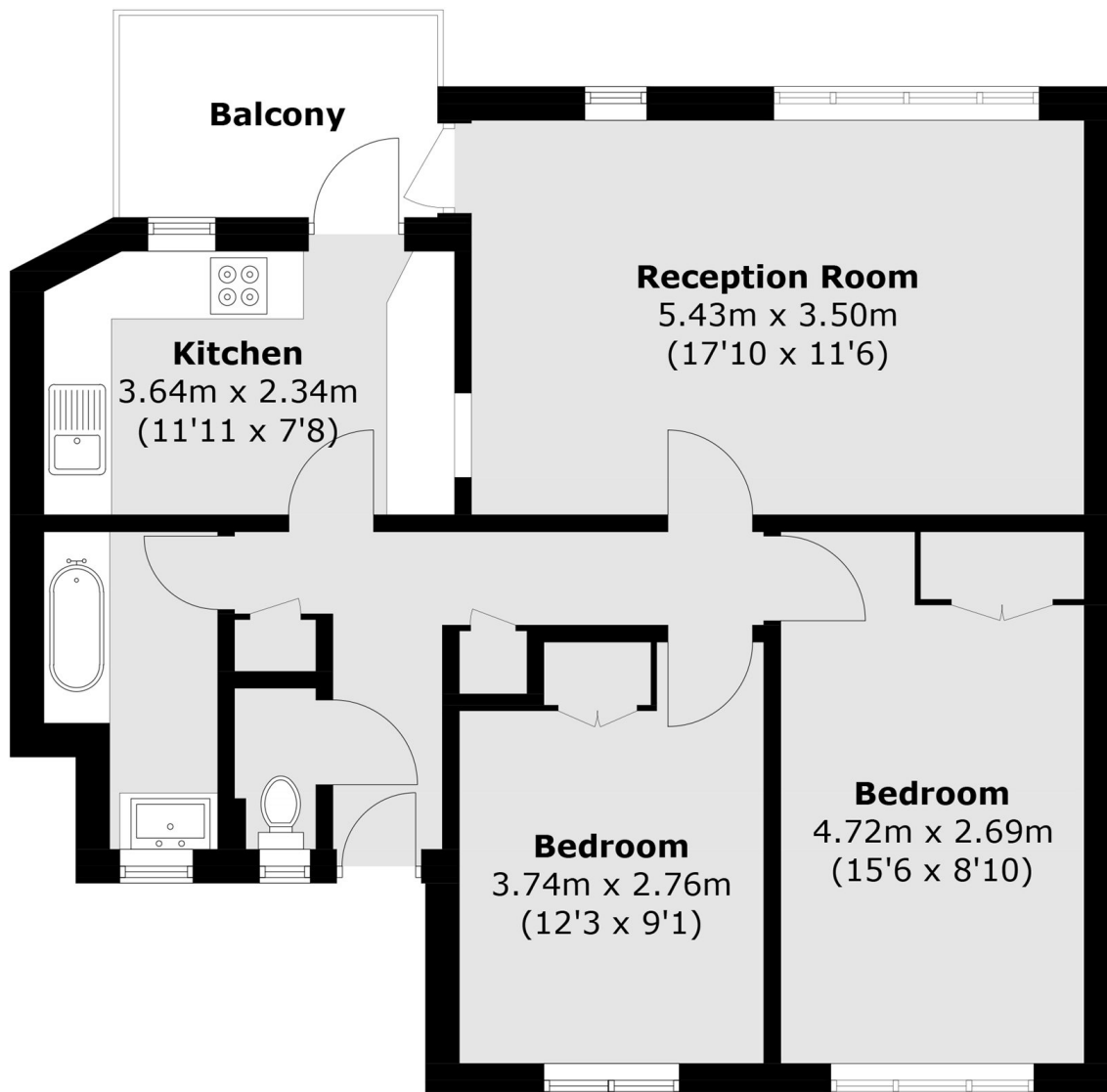
A bright two double bedroom flat with lift access, situated on the sixth floor. The flat has a private balcony, wood floors and a separate kitchen. Heating and hot water included.

Churchill Gardens is a conservation area, Keats House a listed building and is kept in very good condition. It is only a short walk to the shopping areas in Pimlico, Sloane Square and Victoria, as well as being in a great position by the river. The closest station is Pimlico

Features

Two Double Bedrooms
Wooden Floor Throughout
Large Living Area
Moments from the River
Thames
Balcony
Lift

Churchill Gardens, London, SW1V



Total area (approx.): 65.4 sq. m (704.0 sq. ft)
Balcony: 5.0 sq. m (53.8 sq. ft)