



Church Street, Haxey, Doncaster, DN9 2HY

Offers in the Region of **£325,000**



Bedrooms: 5

Bathrooms: 1

Located in a popular rural setting, this substantial property offers a large footprint and a clear opportunity for improvement, making it ideal for buyers looking to add value and create a bespoke executive-style home. The accommodation is arranged over two floors and provides flexible living space suited to a variety of needs.

The property benefits from well-proportioned rooms and good natural light throughout. The main living room features a central fireplace and offers generous space for everyday living or entertaining.

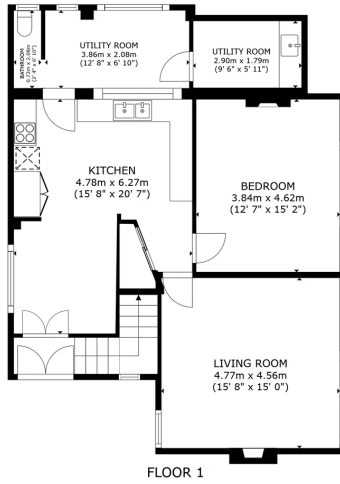
The kitchen provides ample storage and worktop space and presents obvious scope for modernisation or reconfiguration. Throughout the house, finishes are mixed, underlining the potential for updating and personalisation rather than immediate occupation.

With five bedrooms, the layout lends itself well to larger families, home working, or multi-generational living. The bathrooms are functional but dated, offering further opportunity for improvement.

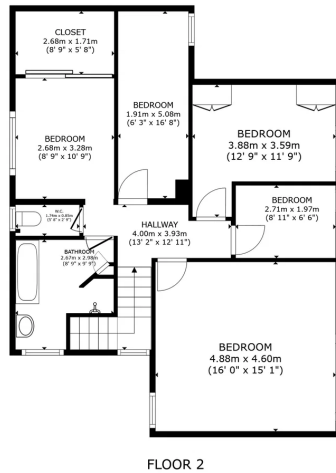
Overall, this is a sizeable rural home with strong redevelopment potential, ideal for buyers seeking a project with the scope to create a high-quality, individual home in a well-regarded location.



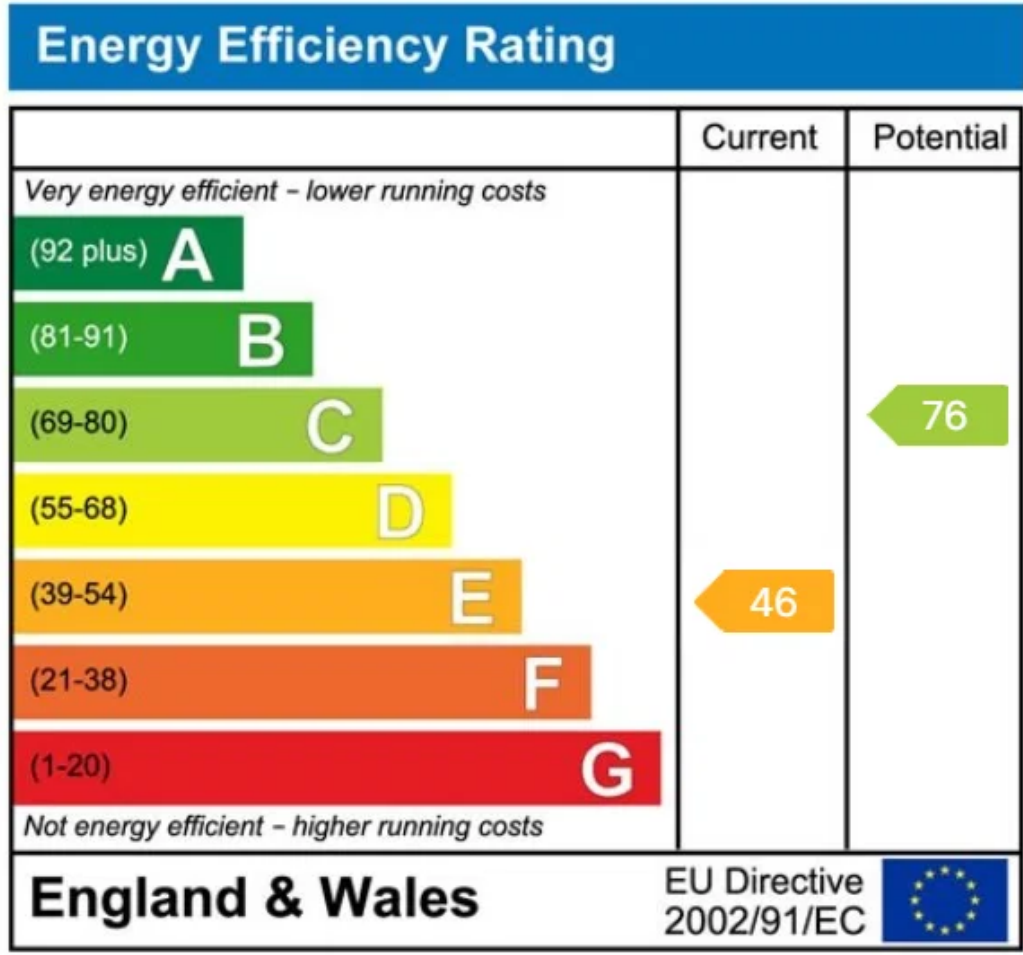
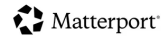




GROSS INTERNAL AREA
FLOOR 1 90.9 m² (979 sq.ft.) FLOOR 2 82.5 m² (888 sq.ft.)
TOTAL : 173.4 m² (1,866 sq.ft.)
SIZES AND DIMENSIONS ARE APPROXIMATE, ACTUAL MAY VARY.



GROSS INTERNAL AREA
FLOOR 1 90.9 m² (979 sq.ft.) FLOOR 2 82.5 m² (888 sq.ft.)
TOTAL : 173.4 m² (1,866 sq.ft.)
SIZES AND DIMENSIONS ARE APPROXIMATE, ACTUAL MAY VARY.



elitepg.co.uk

01302 981149