



## LEIGHAM COURT ROAD, SW16

£415,000

Two bedrooms  
Double balcony  
Modern finish  
Parking available  
Close to Streatham Hill Station  
Energy Rating: B



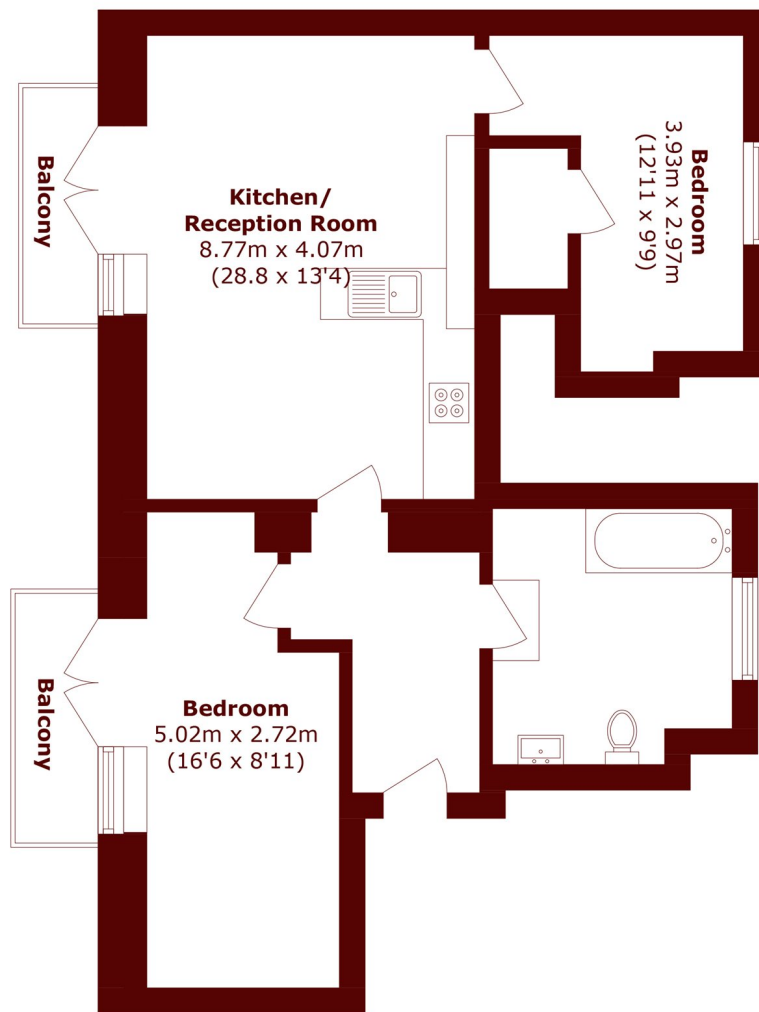
# ABOUT THE PROPERTY

This bright and spacious property comprises; two bedrooms a fitted cupboard space large modern kitchen, opening out into the reception area with access to the large open balcony, The property further benefits from a modern finish with high quality appliances found throughout. The property is Chain free and perfect for first time buyers.

Albans Close is a popular gated development sitting peacefully just off Leigham Court Road, well placed for the wide variety of shops, bars and restaurants of Streatham High Street and just 0.2m from Streatham Hill Station which connects to London Victoria.



# STEP INSIDE LEIGHAM COURT ROAD



Total area (approx.): 61.6. sq. m (663.1 sq. ft)  
Balcony area (approx.): 5.3 sq. m (57.1 sq. ft)

**Streatham**  
020 8671 0171

Energy Rating: B We aim to make our particulars both accurate and reliable. However, they are not guaranteed; nor do they form part of an offer or contract. If you require clarification on any points then please contact us, especially if you're traveling some distance to view. Please note that appliances and heating systems have not been tested and therefore no warranties can be given as to their good working order

**MARSH &  
PARSONS**