

8 Amesbury Road

Epping, Epping

Welcome to Amesbury Road. Arranged across three floors with two ensuite bathrooms, an open plan kitchen/family room, plus a spacious garden with garden room, this much-loved family home is a great place to lay down roots.

Council Tax band: F

Tenure: Freehold

- Primary Suite with Bathroom & Dressing Room
- Two Ensuite Bathrooms
- Open Plan Kitchen / Dining / Living Area
- Driveway & Garage
- Spacious Garden with Garden Room
- Short walk to Epping high street & station



Hallway

Lounge

13' 11" x 13' 2" (4.25m x 4.02m)

Kitchen

19' 3" x 12' 2" (5.86m x 3.72m)

Dining / Family Room

19' 3" x 9' 2" (5.86m x 2.79m)

Utility

15' 6" x 5' 9" (4.72m x 1.76m)

WC

Bedroom

14' 2" x 12' 4" (4.31m x 3.75m)

Ensuite Bathroom

Bedroom

13' 11" x 9' 8" (4.23m x 2.94m)

Bedroom

15' 7" x 8' 2" (4.74m x 2.48m)

Bedroom

10' 0" x 7' 3" (3.04m x 2.21m)

Shower Room

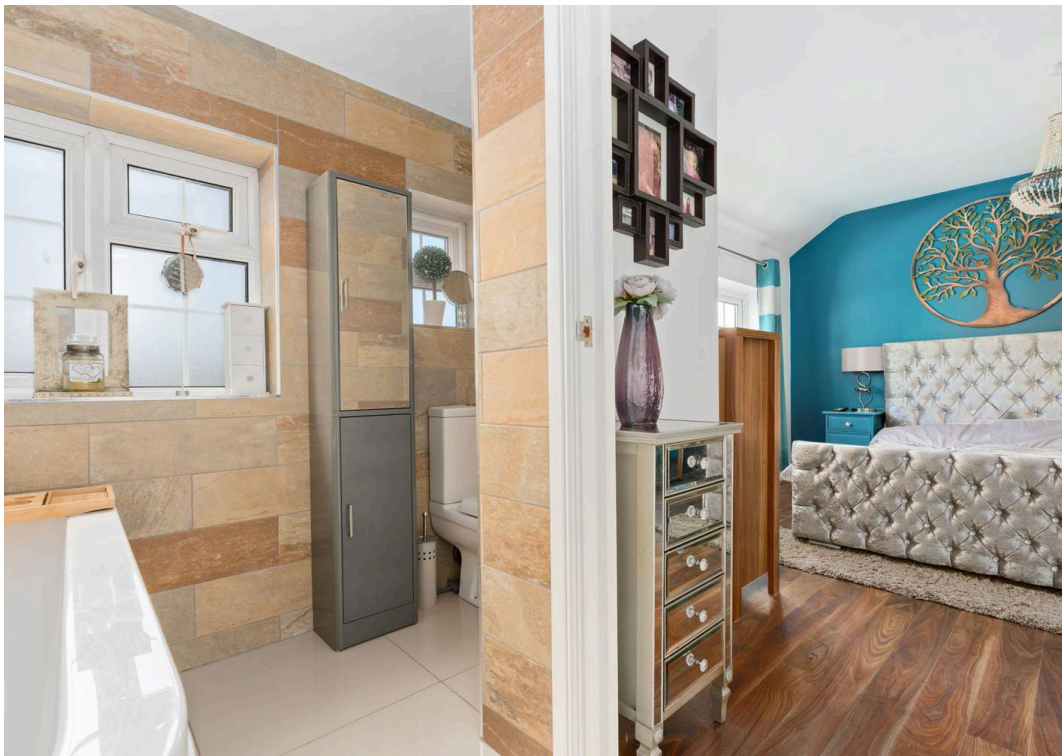
Primary Bedroom

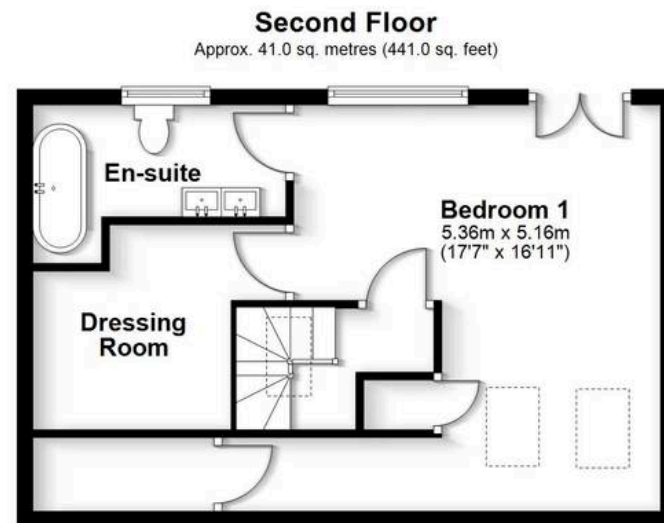
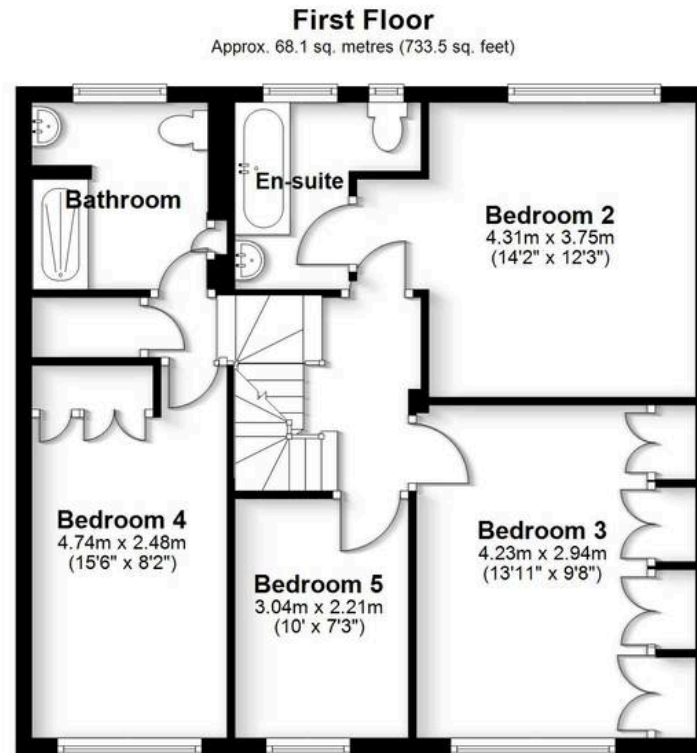
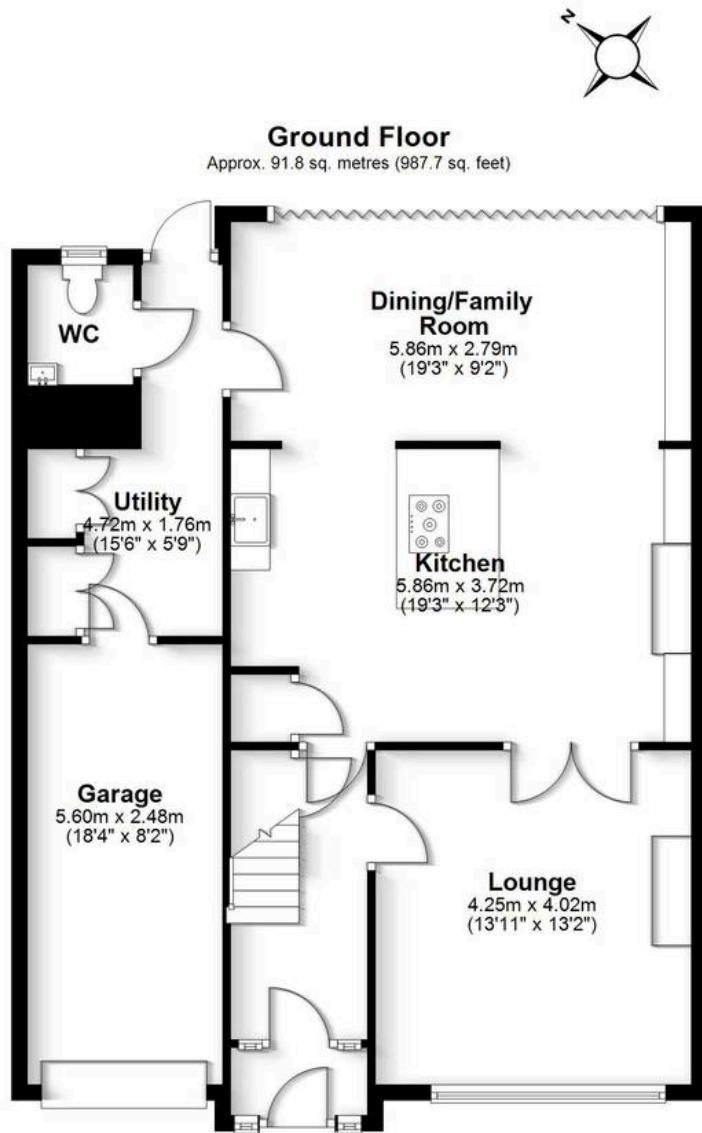
17' 7" x 16' 11" (5.36m x 5.16m)

Ensuite Bathroom

Dressing Area







Total area: approx. 200.9 sq. metres (2162.2 sq. feet)