

GROSVENOR HILL COURT, WIK



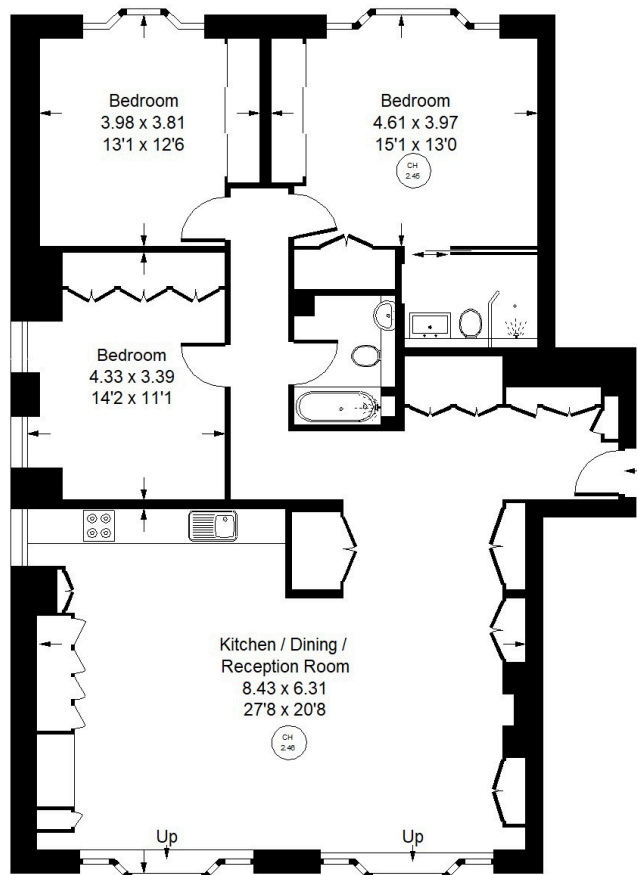


Grosvenor Hill Court, W1K

Situated moments from the elegance of Berkeley Square, this exceptionally spacious fifth floor apartment is located above the famous Gagosian Gallery and features a communal roof garden. The apartment benefits from a triple aspect and far-reaching views across Mayfair. There is an impressive 27-foot wide open-plan kitchen and reception room with wooden flooring throughout and generous concealed storage. The principal bedroom suite offers attractive city views, ample built-in wardrobes, and a stylish en-suite shower room. Two further double bedrooms, both generously proportioned, are complemented by a separate family bathroom. Grosvenor Hill Court is a well-managed residential building with lift access and a dedicated on-site resident concierge. Bourbon Street is just moments from Grosvenor Square, Mount Street, and Berkeley Square. Residents enjoy immediate access to world-class boutiques, fine dining establishments, and convenient transport links that London's West-End has to offer.



Approx. Gross Internal Area
= 125.9 sq m / 1,355 sq ft



Fifth Floor



Grosvenor Hill Court, W1K - Leasehold

Local Authority - City of Westminster

- Three Double Bedrooms
- Lift and Resident Porter
- Moments from Berkley Square
- EPC Rating: C
- Council Tax Band: H



Whilst every attempt has been made to ensure the accuracy of the floor plan, measurements are approximate and not to scale. No guarantee is given on the total square footage of the property quoted on the plan. Figures given are for guidance. Plan is for illustration purposes only, not to be used for valuations.