



Stanford Road, SW16

£525,000

Presented in modern condition, this three-bedroom family home boasts a private garden, located in a prime location situated just 0.4 miles from Norbury Station.

Stanford Road is a quiet residential street set just off Norbury town centre. The nearest mainline station, Norbury, is only 0.4 miles away, offering regular rail services to London Bridge and London Victoria. The area is well served by amenities, highly regarded schools, with Norbury Park and Streatham Common also nearby, providing excellent recreational facilities.

Features

- Three bedrooms
- Private garden
- 0.4 Miles from station
- Modern condition
- Open plan kitchen

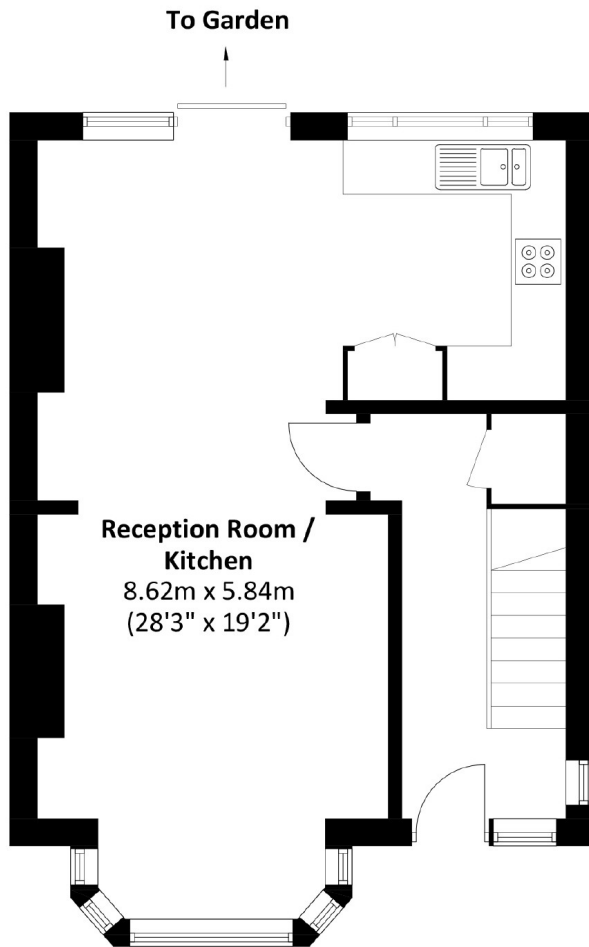


Stanford Road, SW16

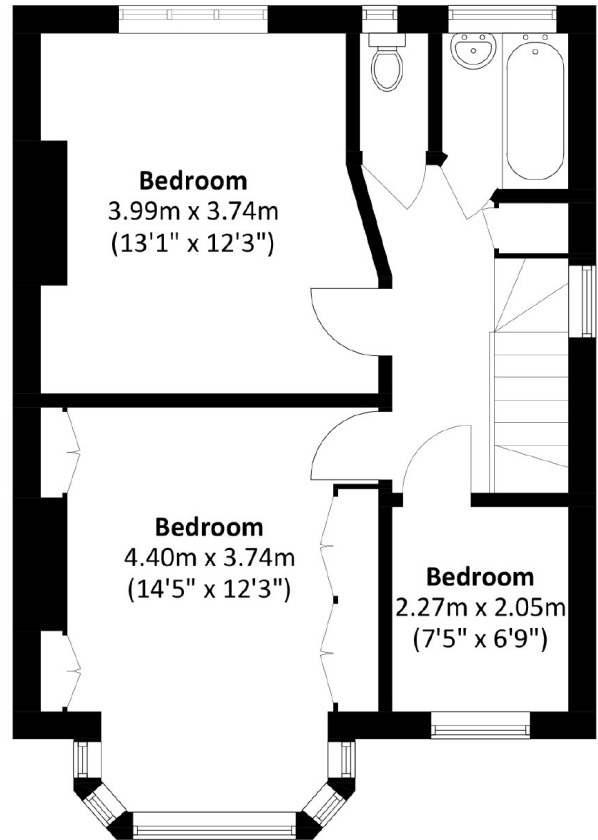
Presented in a modern condition, this spacious home offers a bright reception room leading to an open-plan kitchen diner, with access to the private garden. Upstairs you'll find three well-maintained bedrooms with plenty of storage, ideal for families.



Stanford Road, London, SW16



Ground Floor



First Floor

Total area: Approx. 93.4 sq. meters (1,005.3 sq. feet)

Dexters

Norbury
1341 London Road
Norbury
SW16 4BE
Sales
020 8629 8028

Energy Rating: D. We aim to make our particulars both accurate and reliable. However they are not guaranteed; nor do they form part of an offer or contract. If you require clarification on any points then please contact us, especially if you're traveling some distance to view. Please note that appliances and heating systems have not been tested and therefore no warranties can be given as to their good working order.

 **RICS** | Regulated
Estate Agent
and Letting Agent

[dexters.co.uk](https://www.dexters.co.uk)