



£265,000

At a glance...



3



1



1

EPC

C

COUNCIL
TAX

B

**holland
& odam**

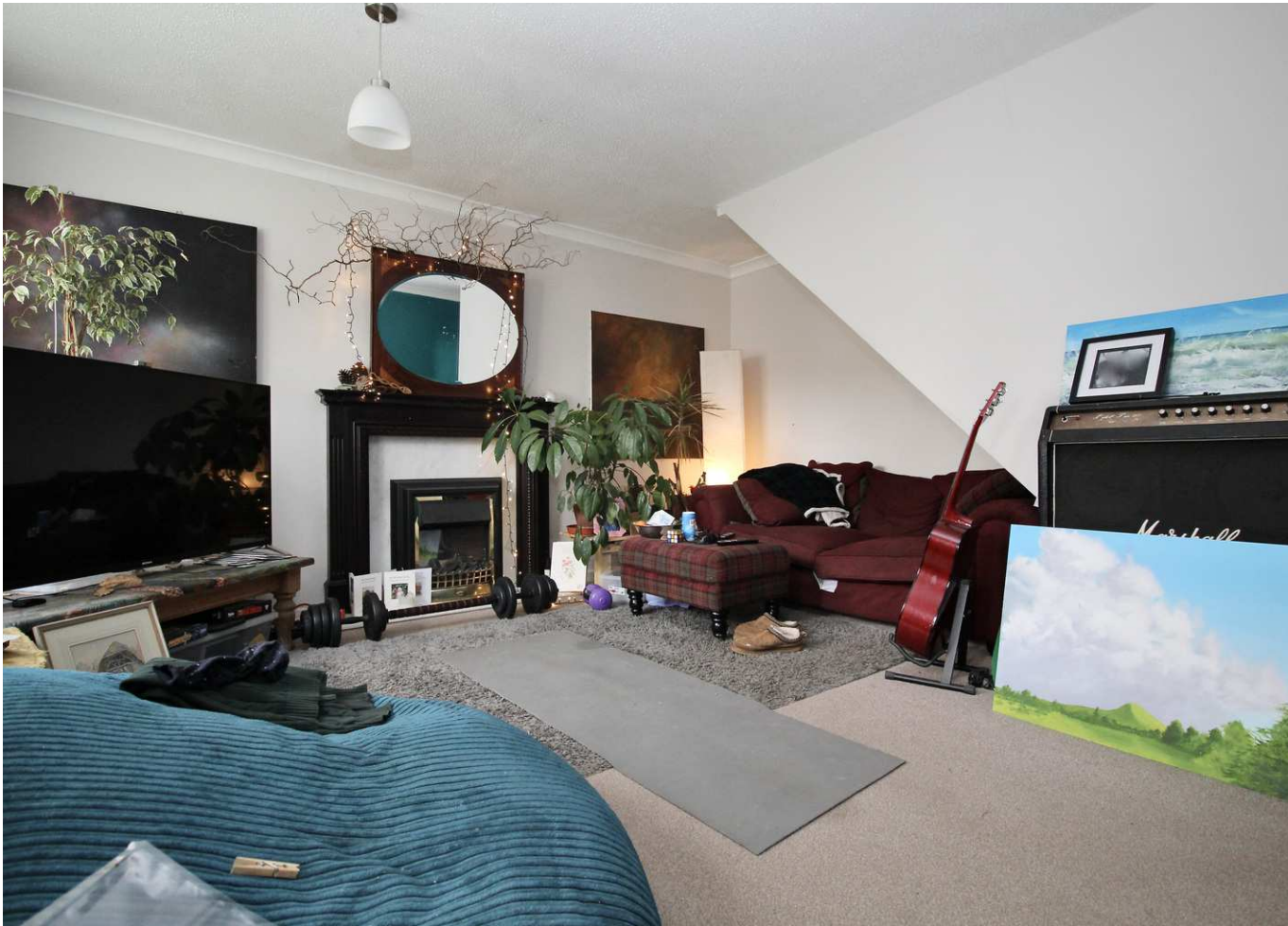
9 Gould Close
Street
Somerset
BA16 0AZ

TO VIEW

3 Farm Road, Street,
Somerset BA16 0BJ

01458 841411

street@hollandandodam.co.uk



Directions

From the High Street proceed in an easterly direction until reaching the Wessex Hotel on the right. Proceed straight across the mini roundabout into Church Road and take the first right hand turning into Strode Road, passing the indoor swimming pool. Continue crossing the junction at the bottom of Bove Moor Road into the development, where the turning to Gould Close is the second on your left. Follow the road around to the left and no 9 will be found in front of you and identified by our for sale board.

Services

Mains electricity, gas, water and drainage are connected. Gas central heating system.

Local Authority

Somerset Council
0300 1232224
somerset.gov.uk

Tenure

Freehold



Location

The property is situated within an established area of the town which offers a good range of shopping facilities including Clarks Village complex of factory shopping outlets. Street also offers recreational facilities including theatre, tennis, bowls, and both indoor and outdoor swimming pools. The historic town of Glastonbury is within 3 miles, the Cathedral City of Wells 9 miles and the nearest M5 motorway interchange at Dunball, Bridgwater is within 14 miles. Bristol, Bath, Taunton and Exeter are each within an hours drive.

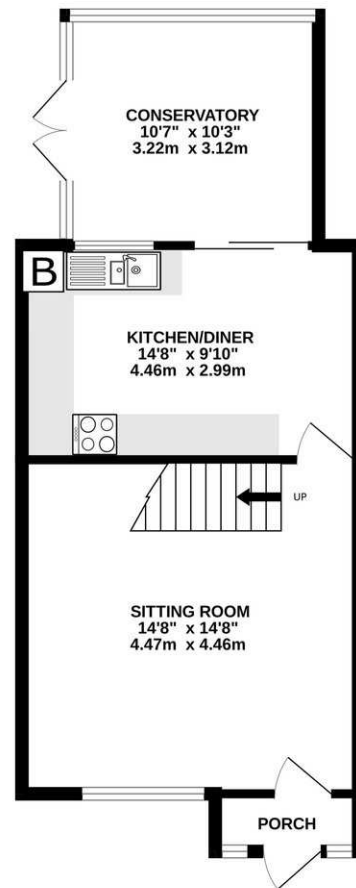
Insight

A mature three-bedroom end-of-terrace home, pleasantly positioned on the outskirts of town within a residential area. The property enjoys views across towards Glastonbury Tor and offers well-proportioned accommodation, a good-sized garden and parking.

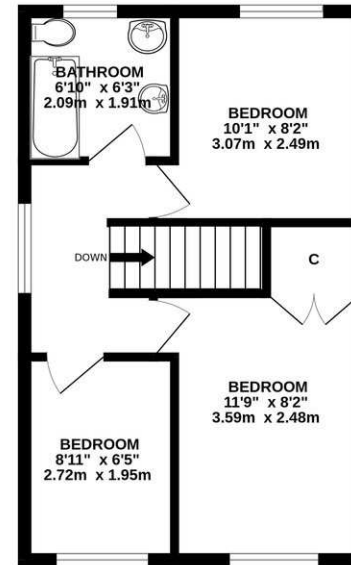
- Enjoying a Bright and airy spacious sitting room with a large front-facing window and feature fireplace at its heart.
- Kitchen/diner fitted with a range of wall, base and drawer units, with a cooker and space for under-counter appliances. There is ample room for a dining table and chairs.
- A good-sized conservatory provides a versatile additional living space, enjoying pleasant views over the garden and direct access outside, making it ideal for relaxing, dining or entertaining.
- Affording three bedrooms, including two good-sized doubles; one benefiting from built-in wardrobe space, while the other enjoys attractive views across to Glastonbury Tor.
- The property is served by a family bathroom comprising a compact bath with shower over, wash basin and WC.
- Good-sized rear garden mainly laid to lawn, edged with mature shrubs and trees, with a patio seating area and a summer house fitted with electric.
- Convenient tandem driveway parking provides practical off-road parking for multiple vehicles.
- Offered to market with the benefit of no onward chain.



GROUND FLOOR



1ST FLOOR



Whilst every attempt has been made to ensure the accuracy of the floorplan contained here, measurements of doors, windows, rooms and any other items are approximate and no responsibility is taken for any error, omission or mis-statement. This plan is for illustrative purposes only and should be used as such by any prospective purchaser. The services, systems and appliances shown have not been tested and no guarantee as to their operability or efficiency can be given.
Made with Metropix 62026

DISCLAIMER

CONSUMER PROTECTION FROM UNFAIR TRADING REGULATIONS 2008. The Agent has not tested any apparatus, equipment, fixtures and fittings or services and so cannot verify that they are in working order or fit for the purpose. A Buyer is advised to obtain verification from their Solicitor or Surveyor. References to the Tenure of a Property are based on information supplied by the Seller. The Agent has not had sight of the

title documents. A Buyer is advised to obtain verification from their Solicitor. Items shown in photographs are not included unless specifically mentioned within the sales particulars. They may however be available by separate negotiation. Buyers must check the availability of any property and make an appointment to view before embarking on any journey to see a property.

DATA PROTECTION. Personal information provided by customers wishing to receive information and/or services from the estate agent and the Property Sharing Experts (of which it is a member) for the purpose of providing services associated with the business of an estate agent but specifically excluding mailing or promotions by a third party. If you do not wish your personal information to be used for any of these purposes, please notify us.