



Connells

Devereux Place
Leadenhall Milton Keynes



Property Description

Connells Estate Agents are delighted to be able to bring to the market this one bedroom upper floor apartment.

The property is located in the sought after area of Leadenhall, which is ideally situated in Milton Keynes as it is nearby to the city centre, all of its amenities, the mainline railway station and also Milton Keynes hospital.

The accommodation comprises: secure intercom system in the entrance porch and the entrance hall, open plan living room, kitchen/dining room, one bedroom and a bathroom. Outside there is allocated parking space.

Please see the full range of images as well as the floorplan that shows an indicative view of room layouts. For further information and to arrange your viewing call Connells Estate Agents today on 01908 674141 or email miltonkeynes@connells.co.uk.

Area

Leadenhall is conveniently located close to Central Milton Keynes and all of its amenities. Centre:MK, the Xscape building and the theatre district are all within easy reach and offer a range of retail, recreational and entertainment facilities.

The mainline train station is also within easy reach and this offers regular and direct links

into London Euston, with journey times of approximately 35 minutes. Main trunk roads such as the A5, A421, A422 and A509 are all within a short drive, whilst Junctions 13 & 14 of the M1 also connect to Milton Keynes. There are well served local bus routes and plenty of redways providing cycle and walking routes across the town.

Communal Entrance Hall

Door to front, entrance via intercom system.

Entrance Hall

Door to side and 2 cupboards.

Lounge/Diner

16' 10" Maximum x 16' 9" (5.13m Maximum x 5.11m)

Double glazed windows to front and side with Juliet balcony, T/V and telephone points and open plan leading to kitchen.

Kitchen

Fitted kitchen, eye base units worksurfaces, stainless steel sink drainer, part tiled, space for fridge freezer and washing machine. Built in electric hob, oven and cooker hood over and open plan leading in to lounge diner.

Bedroom One

12' 1" x 10' 2" (3.68m x 3.10m)

Double glazed window to rear and side.

Bathroom

Double glazed window to rear. Fitted bathroom, bath with mixer taps, shower over, heated towel radiator, w/c, wash hand basin and part tiled.

Parking

Allocated for one vehicle.

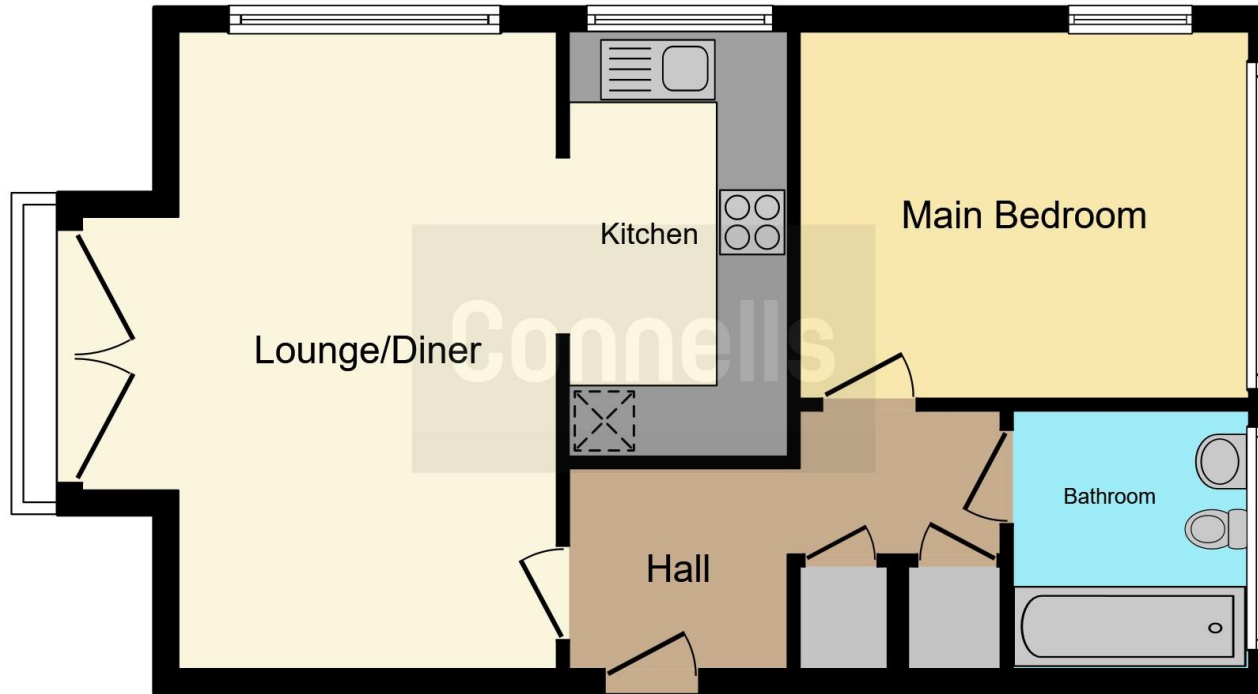
Agents Notes

This property is currently owned as a shared ownership but this is the outright price and the staircasing can be carried out through the sales transaction.









This floor plan is for illustrative purposes only. It is not drawn to scale. Any measurements, floor areas (including any total floor area), openings and orientation are approximate. No details are guaranteed, they cannot be relied upon for any purpose and they do not form part of any agreement. No liability is taken for any error, omission or misstatement. A party must rely upon its own inspection(s). Powered by www.focalagent.com

To view this property please contact Connells on

T 01908 674 141
E miltonkeynes@connells.co.uk

Northgate House 500 Silbury Boulevard
 MILTON KEYNES MK9 2AD

EPC Rating: C

Council Tax
 Band: B

Service Charge: Ask
 Agent

Ground Rent:
 Ask Agent

Tenure: Leasehold

view this property online connells.co.uk/Property/MKN320313

This is a Leasehold property. We are awaiting further details about the Term of the lease. For further information please contact the branch. Please note additional fees could be incurred for items such as Leasehold packs.



1. MONEY LAUNDERING REGULATIONS Intending purchasers will be asked to produce identification documentation at a later stage and we would ask for your co-operation in order that there will be no delay in agreeing the sale. 2. These particulars do not constitute part or all of an offer or contract. 3. The measurements indicated are supplied for guidance only and as such must be considered incorrect. Potential buyers are advised to recheck measurements before committing to any expense. 4. We have not tested any apparatus, equipment, fixtures, fittings or services and it is in the buyers interest to check the working condition of any appliances.

Connells Residential is registered in England and Wales under company number 1489613, Registered Office is Cumbria House, 16-20 Hockliffe Street, Leighton Buzzard, Bedfordshire, LU7 1GN. VAT Registration Number is 500 2481 05.

See all our properties at www.connells.co.uk | www.rightmove.co.uk | www.zoopla.co.uk

Property Ref: MKN320313 - 0007