



Albert Street, Pittville, GL50 4HS

Guide Price £315,000



Albert Street

Pittville, GL50 4HS

A beautifully presented red brick mid-terrace home, rich in character and offering a wonderful blend of period features and modern styling, ideally positioned within the heart of Pittville.

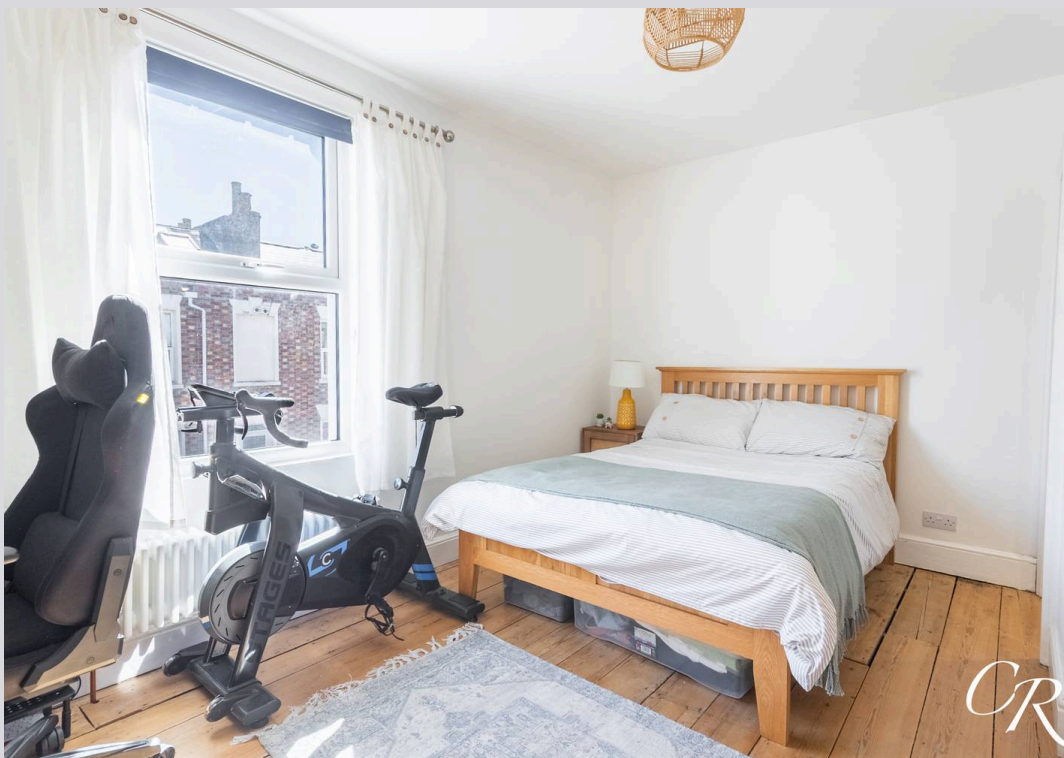
Council Tax band: B

Tenure: Freehold

EPC Energy Efficiency Rating: D

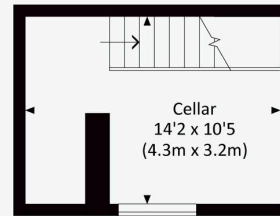
- Beautifully Presented Period Mid Terraced Property
- Two Double Bedrooms, Both With En-Suites
- Two Reception Rooms With Period Features
- Useful Basement With Conversion Potential (STPP)
- Enclosed Courtyard Garden With Rear Access
- Within The Heart Of Pittville





ALBERT STREET

Approx. gross internal area
1027 Sq Ft. / 95.4 Sq M.



LOWER GROUND FLOOR



GROUND FLOOR



FIRST FLOOR

All measurements are approximate and for guidance and illustrative purposes only.
Floor Plan not to scale and completed by a RICS surveyor.

Cook Residential

Cook Residential, 4 Tebbit Mews Winchcombe Street - GL52 2NF

01242 500259 • enquiries@cookresidential.co.uk • cookresidential.co.uk

For more detailed information please refer to the Cook Residential website. All information regarding the property details, including its position on Freehold, will be confirmed between vendor and purchaser solicitors. All measurements are approximate and for guidance purposes only.