



Jury Street, Warwick, CV34 4EH

**SHELDON
BOSLEY
KNIGHT** LAND AND
PROPERTY
PROFESSIONALS

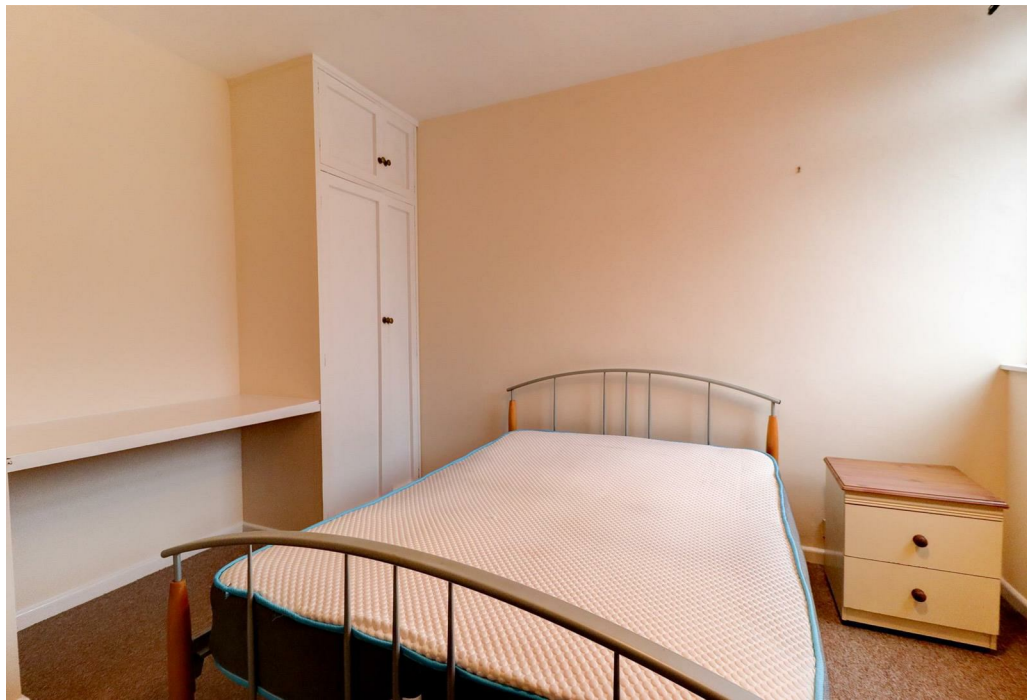
Property Description

*** AVAILABLE 25th JULY - DEPOSIT ALTERNATIVE AVAILABLE *** Second-floor one-bedroom spacious flat located in the heart of historic Warwick. Jury Street provides the perfect spot for all doorstep amenities, close to Warwick Castle and St Nicholas' Recreational Park. Excellent commuting routes by train, bus, car, or foot.

This newly redecorated property comprises, in brief: open-plan living/dining and kitchen area (with fridge/freezer and washing machine included), hallway with multiple storage options, bedroom with built-in dressing area and built-in wardrobe, and a newly refurbished bathroom with full suite including shower over bath and further storage.

With on-street permit parking, this home is offered furnished or unfurnished (landlord is flexible). Energy Rating E. Council Tax Band A.





Key Features

- AVAILABLE 25th JULY
- DEPOSIT ALTERNATIVE AVAILABLE
- Warwick
- One Bedroom
- Town Centre Location
- Excellent Local Amenities
- Close to Warwick Castle & St Nicholas Park
- Furnished or Unfurnished
- Energy Rating E
- Council Tax Band A

£825 PCM

