



19 Lakeside Close
Etruria, Stoke-On-Trent, ST1 5GB

A modern family retreat with serene pond views and a lifestyle shaped for those who aim higher.

£280,000

19 Lakeside Close

Etruria, Stoke-On-Trent, ST1 5GB

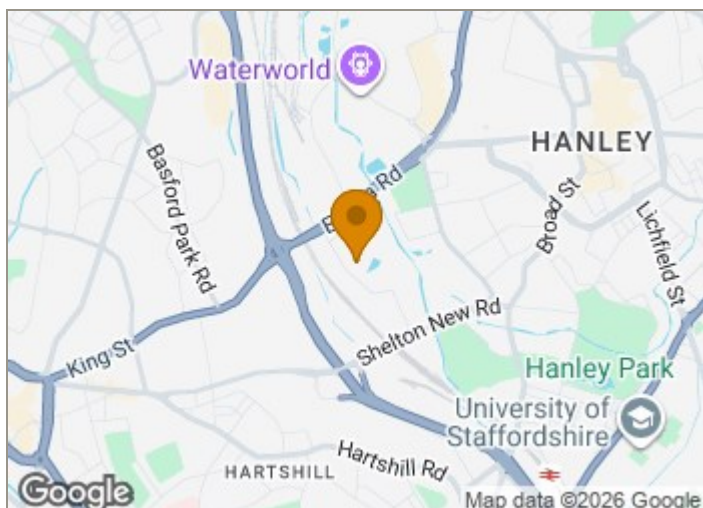


- Serene pond side setting that elevates everyday living
- Wide lawned garden perfect for play and outdoor dining
- Open plan ground floor ideal for modern family life.
- A modern family home shaped for young executive living.
- Four double bedrooms with a private ensuite retreat.

[Agent Disclaimer/Contact Details](#)

[Main Description](#)

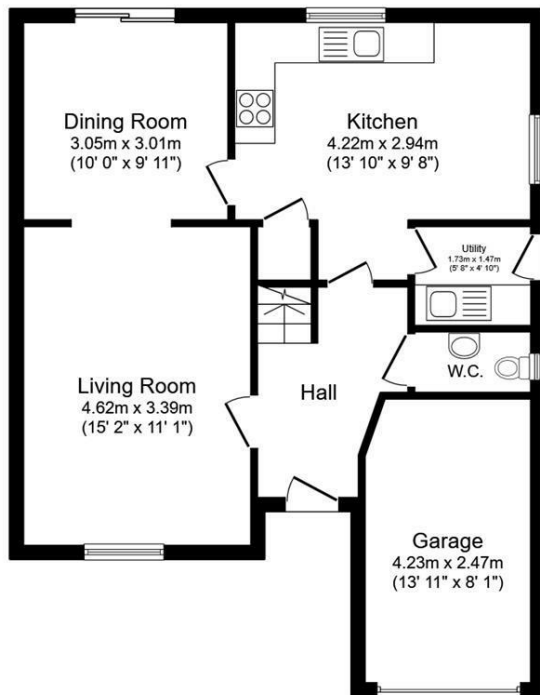
[Room Descriptions](#)



[Directions](#)

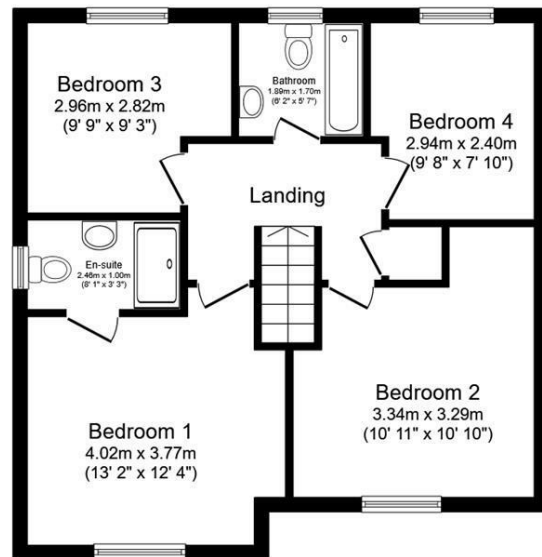


Floor Plan



Ground Floor

Floor area 62.8 sq.m. (675 sq.ft.)



First Floor

Floor area 55.9 sq.m. (602 sq.ft.)

Total floor area: 118.7 sq.m. (1,278 sq.ft.)

This floor plan is for illustrative purposes only. It is not drawn to scale. Any measurements, floor areas (including any total floor area), openings and orientations are approximate. No details are guaranteed, they cannot be relied upon for any purpose and do not form any part of any agreement. No liability is taken for any error, omission or misstatement. A party must rely upon its own inspection(s). Powered by www.Propertybox.io

These particulars, whilst believed to be accurate are set out as a general outline only for guidance and do not constitute any part of an offer or contract. Intending purchasers should not rely on them as statements of representation of fact, but must satisfy themselves by inspection or otherwise as to their accuracy. No person in this firm's employment has the authority to make or give any representation or warranty in respect of the property.

Energy Efficiency Rating		Current	Potential	Environmental Impact (CO ₂) Rating		Current	Potential
Very energy efficient - lower running costs				Very environmentally friendly - lower CO ₂ emissions			
(92 plus) A				(92 plus) A			
(81-91) B				(81-91) B			
(69-80) C				(69-80) C			
(55-68) D				(55-68) D			
(39-54) E				(39-54) E			
(21-38) F				(21-38) F			
(1-20) G				(1-20) G			
Not energy efficient - higher running costs				Not environmentally friendly - higher CO ₂ emissions			
England & Wales		EU Directive 2002/91/EC		England & Wales		EU Directive 2002/91/EC	