



## Westbourne Crescent, W2

**£595** Per week

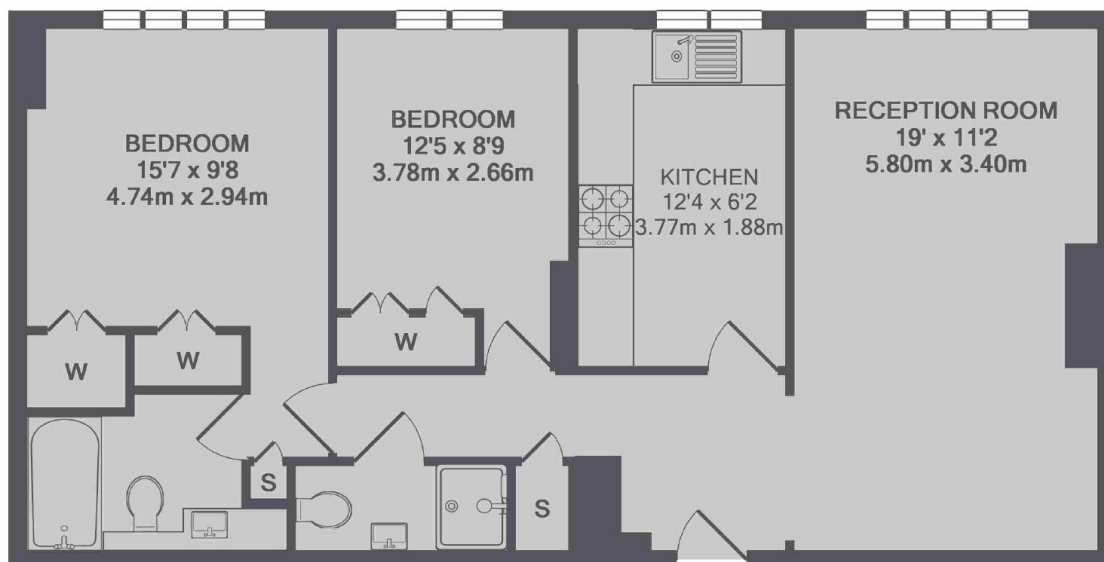
A large two double bedroom apartment that has been newly refurbished to a very high standard. The owner has installed new carpets, a bespoke kitchen and two fully tiled contemporary bathrooms.

Westbourne Crescent is close to Hyde Park and Lancaster Gate Station for the Central Line. Paddington Station is also a short distance away for National Rail, Heathrow Express and the Elizabeth Line.

### Features

- Two Bedrooms
- Two Bathrooms
- Newly Refurbished
- Modern
- Separate Kitchen
- Hyde Park

# Westbourne Crescent, London, W2



TOTAL APPROX. FLOOR AREA 730 SQ.FT. (67.8 SQ.M.)

## Dexters

Hyde Park and Bayswater  
4-5 Spring Street  
London  
W2 3RA  
Lettings  
020 7298 1560

Energy Rating: C. We aim to make our particulars both accurate and reliable. However they are not guaranteed; nor do they form part of an offer or contract. If you require clarification on any points then please contact us, especially if you're traveling some distance to view. Please note that appliances and heating systems have not been tested and therefore no warranties can be given as to their good working order.

 **RICS** | Regulated  
Estate Agent  
and Letting Agent

[dexters.co.uk](https://dexters.co.uk)