



Daffodil Lane, offers in the region of £470,000

- Extended Detached Six bedroom Family home
- Modern kitchen, large living room, dining room and further reception/Sun room
- Close to local Amenities and catchment to Bassaleg School
- Generous Driveway and detached garage
- Arranged over THREE floors with top-floor



 6  2  3



About the property

An impressive six-bedroom executive detached home arranged over three floors and positioned within a sought-after location.

A spacious and welcoming hallway gives access to all principal ground-floor rooms, including a guest cloakroom. The bright and generous living room features double doors opening onto the garden, enhancing the indoor-outdoor flow. The contemporary dove-grey shaker-style kitchen offers contrasting worktops, plinth lighting and a useful utility room with matching units. Double doors lead from the kitchen to the dining room, ideal for entertaining, which in turn opens to a versatile sitting room/garden room with a glazed pitched roof and further double doors to a charming decking area.

The first floor provides four well-proportioned bedrooms, including a spacious principal suite with en-suite, along with a modern family bathroom. The second floor hosts two additional double bedrooms, one with its own WC, offering excellent flexibility for guests or multi-generational living, as well as generous storage.

Outside, the property features side and rear gardens with a patio, decking, and a large lawn. A wide driveway and detached single garage complete this attractive home.



Accommodation

Hallway

Lounge

19' 8" x 11' 4" (5.99m x 3.45m)

Cloakroom/Wc

Dining Room

9' 5" x 9' 10" (2.87m x 3.00m)

Kitchen

11' 11" x 9' 6" (3.63m x 2.90m)

Utility Room

Sitting Room/Garden Room

17' 2" x 9' 3" (5.23m x 2.82m)

First Floor Landing

Bedroom One

11' 8" x 11' 10" (3.56m x 3.61m)

Ensuite

Bedroom Four

9' 10" x 8' (3.00m x 2.44m)

Bedroom Five

9' 4" x 9' 8" (2.84m x 2.95m)

Family Bathroom

Bedroom Six

7' 7" x 8' 5" to robes (2.31m x 2.57m to robes)

Second Floor Landing

Bedroom Two

12' 2" Max Measurements x 12' 4" (3.71m Max Measurements x 3.76m)

Bedroom Three

11' 6" Max Measurements x 12' 2" (3.51m Max Measurements x 3.71m)

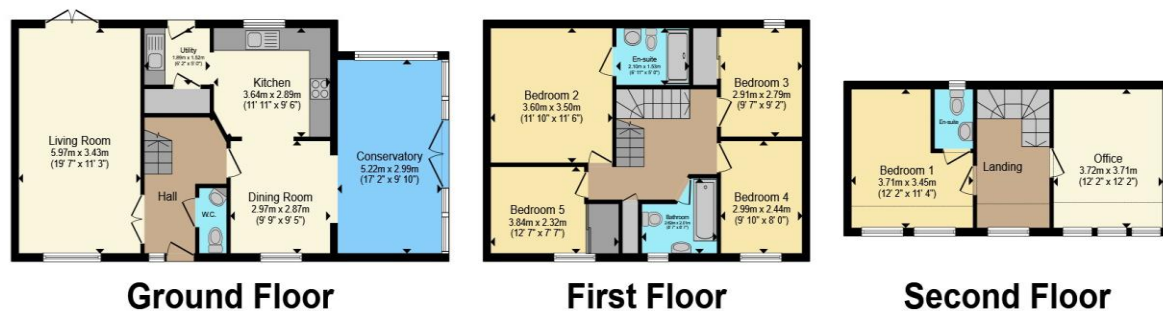
Wc

Outside

01633 221892

newport@peteralan.co.uk

Floorplan



Total floor area 157.3 m² (1,693 sq.ft.) approx

This floor plan is for illustrative purposes only. It is not drawn to scale. Any measurements, floor areas (including any total floor area), openings and orientation are approximate. No details are guaranteed, they cannot be relied upon for any purpose and they do not form part of any agreement. No liability is taken for any error, omission or misstatement. A party must rely upon its own inspection(s). Powered by www.propertybox.io



Important Information

Note while we endeavour to make our sales details accurate and reliable, if there is any point which is of particular interest to you, please contact the office and we will be pleased to confirm the position for you. We have not personally tested any apparatus, equipment, fixtures, fittings or services and cannot verify they are in working order or fit for their purposes. Nothing in these particulars is intended to indicate that carpets or curtains, furnishings or fittings, electrical goods (whether wired or not). Gas fires or light fittings or any other fixtures not expressly included form part of the property offered for sale. This computer generated Floorplan, if applicable, is intended as a general guide to the layout and design of the property. It is not to scale and should not be relied upon for dimensions. Tenure: We cannot confirm the tenure of the property as we have not had access to the legal documents. The buyer is advised to obtain verification from their solicitor or surveyor.

Peter Alan Limited is registered in England and Wales under company number 2073153, Registered Office is Cumbria House, 16-20 Hockliffe Street, Leighton Buzzard, Bedfordshire, LU7 1GN. VAT Registration Number is 500 2481 05. For activities relating to regulated mortgages and non-investment insurance contracts, Peter Alan Limited is an appointed representative of Connells Limited which is authorised and regulated by the Financial Conduct Authority. Connells Limited's Financial Services Register number is 302221. Most buy-to-let

