



Bishopdale Close, Nine Elms – SN5 5UJ
Swindon

In Excess of **£390,000**
mcfarlane
property.com

Bishopdale Close

Nine Elms, Swindon

- Impressive FOUR Bedroom Detached Home
- Updated and Improved Family Home
- Kitchen + Utility Area + Dining Room + DUAL Aspect Living Room
- FOUR Generous Bedrooms
- Enclosed WALLED Rear Gardens
- Detached Single Garage + Driveway
- Imposing Family Home
- SOught After Cul-De-Sac Position



40 Bishopdale Close

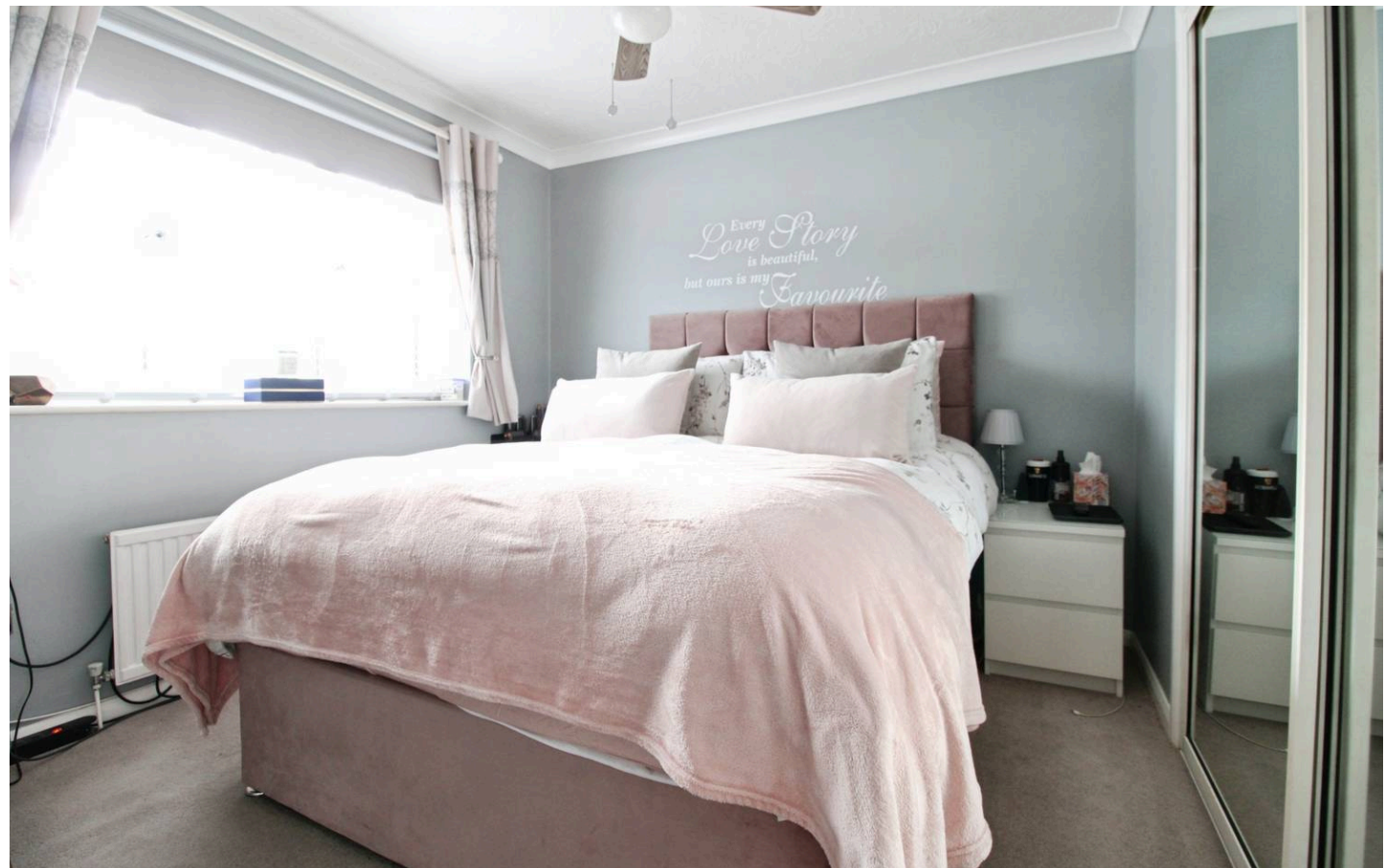
Nine Elms, Swindon

Council Tax band: D

Tenure: Freehold

EPC Energy Efficiency Rating: D

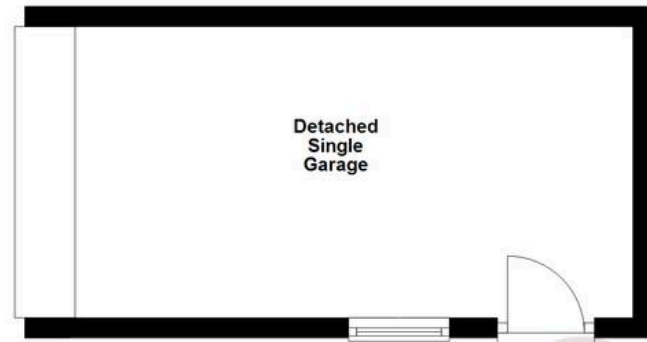
EPC Environmental Impact Rating: D



mcfarlane
property.com

Ground Floor

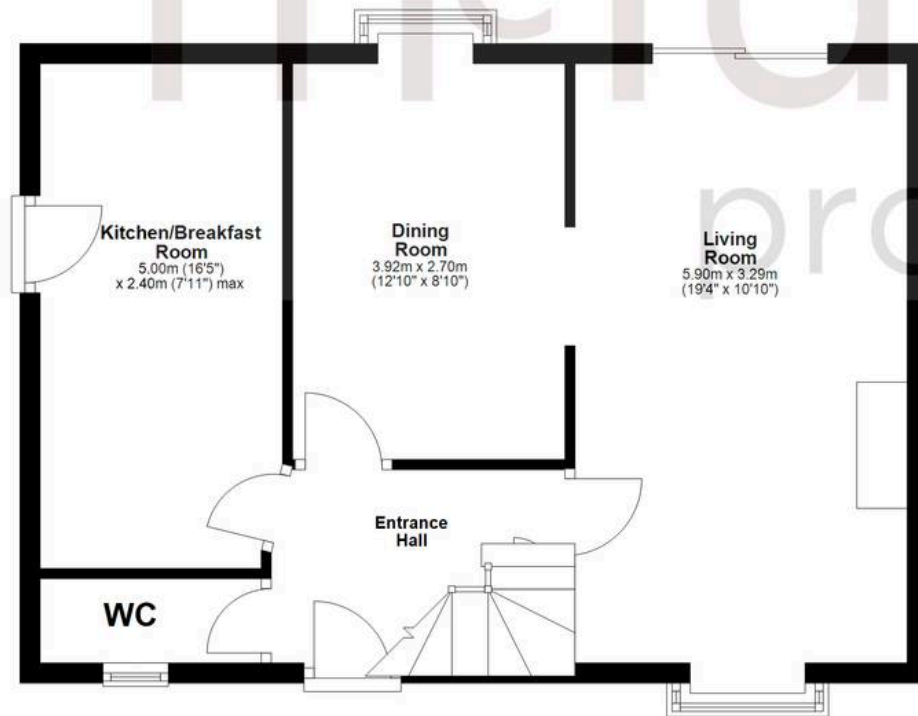
Approx. 68.1 sq. metres (732.8 sq. feet)



Detached
Single
Garage

First Floor

Approx. 52.8 sq. metres (568.8 sq. feet)



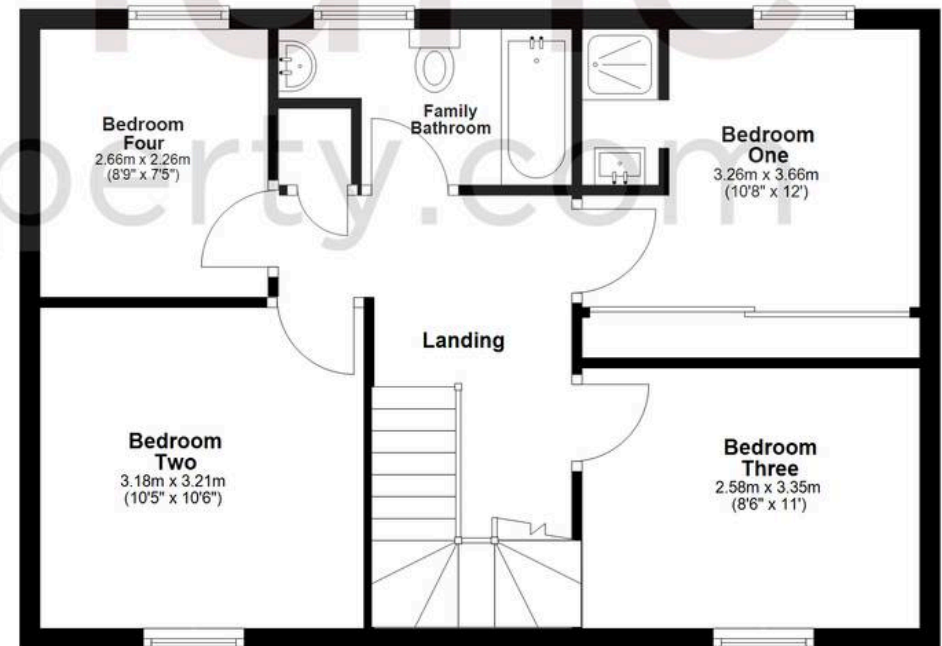
Kitchen/Breakfast
Room
5.00m (16'5")
x 2.40m (7'11") max

Dining
Room
3.92m x 2.70m
(12'10" x 8'10")

Living
Room
5.90m x 3.29m
(19'4" x 10'10")

Entrance
Hall

WC



Bedroom
Four
2.66m x 2.26m
(8'9" x 7'5")

Family
Bathroom

Bedroom
One
3.26m x 3.66m
(10'8" x 12')

Landing

Bedroom
Two
3.18m x 3.21m
(10'5" x 10'6")

Bedroom
Three
2.58m x 3.35m
(8'6" x 11')

Total area: approx. 120.9 sq. metres (1301.6 sq. feet)

Agents Note: Whilst every care has been taken to prepare these sales particulars, they are for guidance purposes only. All measurements are approximate and whilst every care has been taken to ensure their accuracy, they should not be relied upon and potential buyers are advised to recheck the measurements.