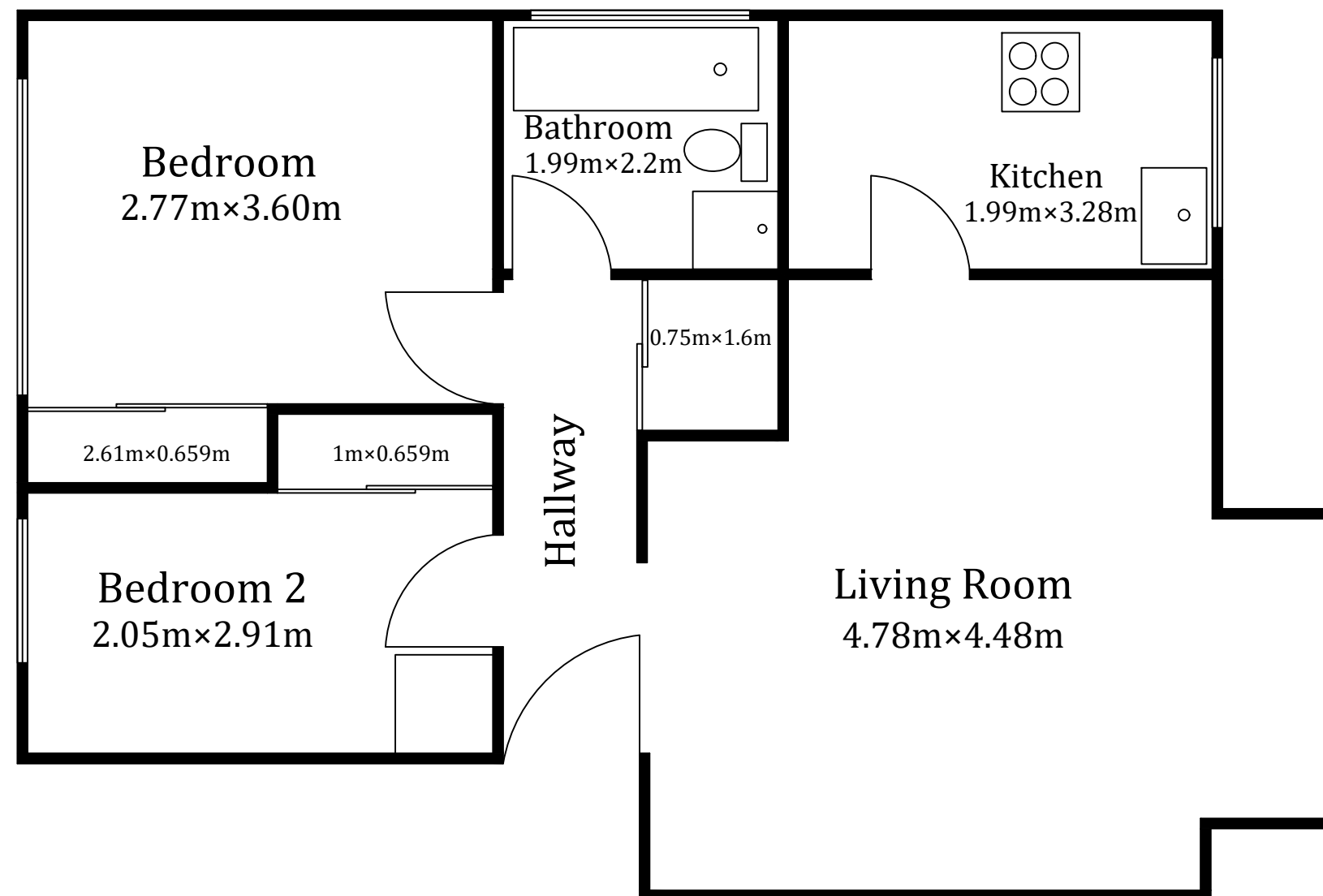
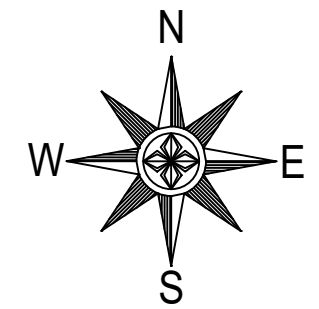


85 Hartscroft, Linton Glade, Croydon, Surrey, CR0 9LD



Aprox Gross Internal Area = 48.26 sqm

Whilst every attempt has been made to ensure the accuracy of the floor plan contained here, measurements of doors, windows, rooms and any other items are approximate and no responsibility is taken for any error, omission, or mis-statement. The measurements should not be relied upon for valuation, transaction and/or funding purposes. This plan is for illustrative purposes only and should be used as such by any prospective purchaser or tenant.

Not to scale