



WARREN HOUSE, W14

£795 per week

Two Double Bedrooms
Large Reception
Wooden Floors Throughout
Lift, Porter and Gym
Parking
Prime Kensington Location

@marshandparsons
marshandparsons.co.uk

MARSH &
PARSONS



ABOUT THE PROPERTY

A two bedroom, two bathroom spacious flat, with a fully fitted kitchen with integrated appliances, ample storage and wooden floors throughout.

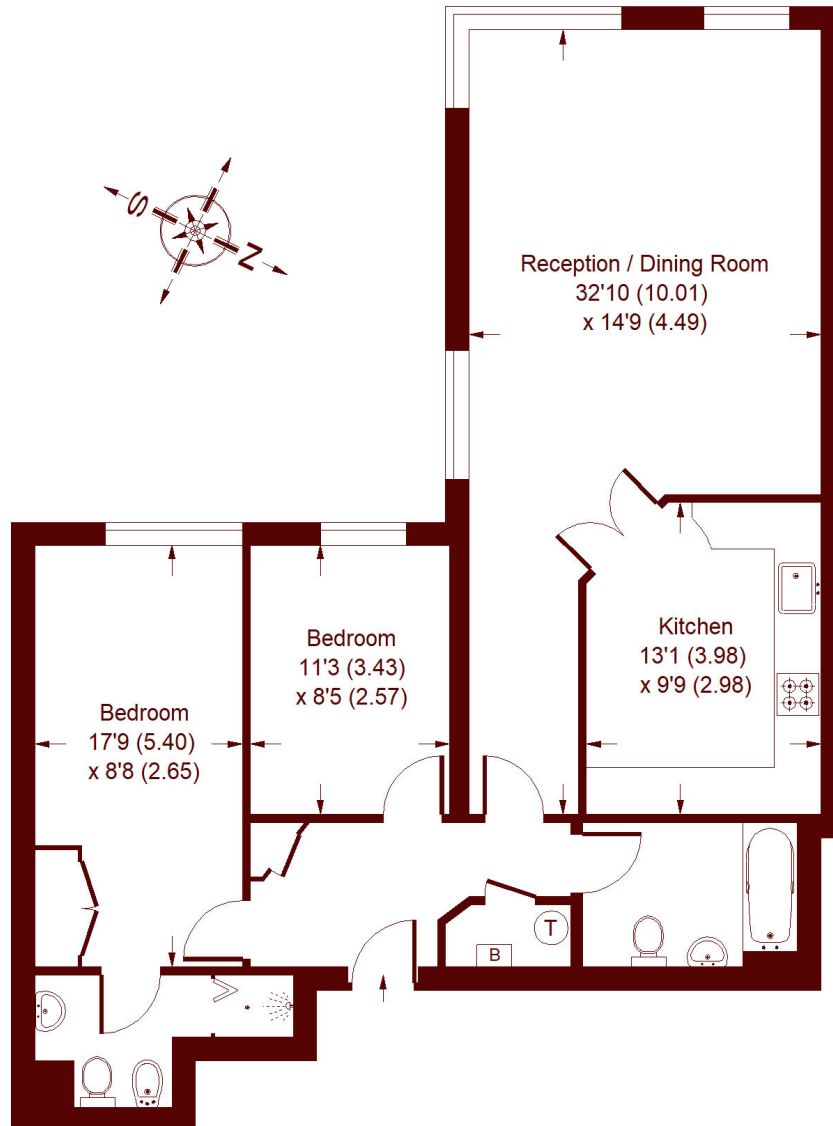
Warren House is conveniently located from all the shops and amenities of Kensington High Street as well as Earls Court and is a short walk to the 24-hour Tesco on Cromwell Road. It is also within a five-minute walk of the tube stations at Earls Court (District and Piccadilly lines) and Kensington Olympia (Overland and District services).



STEP INSIDE WARREN HOUSE

Warren House, W14

APPROX. GROSS INTERNAL FLOOR AREA
948 SQFT / 88.1 SQM



Whilst every attempt has been made to ensure the accuracy of the floor plan, measurements are approximate and not to scale.
No guarantee is given on the total square footage of the property quoted on the plan. Figures given are for guidance.
Plan is for illustration purposes only, not to be used for valuations.

Kensington
020 7368 4460

Energy Rating: B We aim to make our particulars both accurate and reliable. However, they are not guaranteed; nor do they form part of an offer or contract. If you require clarification on any points then please contact us, especially if you're traveling some distance to view. Please note that appliances and heating systems have not been tested and therefore no warranties can be given as to their good working order

MARSH &
PARSONS