



**19 Cowley Way, Chippenham, SN15 4SD**

**£465,000**

Located within the ever popular village of Sutton Benger with its well regarded Primary School this extended semi detached family home has much to offer. On the ground floor the flexible accommodation comprises; entrance hall, lounge, open plan kitchen/dining room, study/family room, utility with cloakroom and access to the garage. The first floor offers four bedrooms with a dressing room to the main and family bathroom. At the rear a generous garden with storage and play space and to the front ample driveway parking.

## Sutton Benger

Sutton Benger is located 4 miles North of Chippenham with its Mainline train station serving London Paddington and only 2.3 miles from Junction 17 of the M4 motorway. The village itself offers a well regarded primary school, pub and church.

## Cowley Way

The entrance porch is ideal for a family offering space for coats, shoes and school bags leading through in to the well proportioned lounge with laminate flooring, feature fire place, stairs leading to the first floor and doorway in to the kitchen/dining room.

The 21' x 15' kitchen/dining room is the heart of the house. With space for table and seating as well as a kitchen island and range of floor and wall mounted units with double electric oven, induction hob, Smeg microwave oven and integral fridge and freezer. The Keylite windows allow large amounts of light to flood in to the room along side French doors which lead in to the garden.

On the ground floor there is a further reception room that could be used as an office/study or play room as the current owners do. The utility room has plubing for a washing machine, Belfast sink, towel radiator, range of floor and wall units and gives access to the cloakroom and garage.

The garage area has a electric roll up door, power and light. Although reduced in length compared to the average garage it offers ample storage space as well as giving access directly in to the back garden.

The first floor landing gives access to four bedrooms and a family bathroom. Bedroom one with its feature wall benefits from a walk in wardrobe with fitted storage. Bedroom Two a further double bedroom tastefully decorated for a young child. Bedroom three a further generous double room and bedroom four is currently used as a nursey with Keylite window to the front.

The family bathroom is well appointed. Part tiled with window to the rear there is an over bath shower, wash hand basin, toilet and towel radiator.

To the rear the garden has been landscaped to offer child friendly and grown up social spaces. Laid to areas of patio, raised decking and artificial lawn it also offers a covered play space/seating area, shed store and children's play house.

At the front the driveway offers parking for multiple vehicles, electric car charger and has also accommodated the family caravan at times.

A property that offers a balance of all aspects required to make up the ideal family home.

## Entrance Porch

## Lounge



## Kitchen/Dining Room





**Family Room/Office**



**Utility Room**



**Cloakroom**

**Landing**



**Bedroom One**



**Dressing Room**



## Bedroom Two



## Bathroom



## Bedroom Three



## Garage

## Gardens



## Bedroom Four





**Driveway**

**Tenure**

We are advised by the .GOV website that the property is Freehold.

**Council Tax**

We are advised by the .GOV website that the property is band D.

# Floor Plan

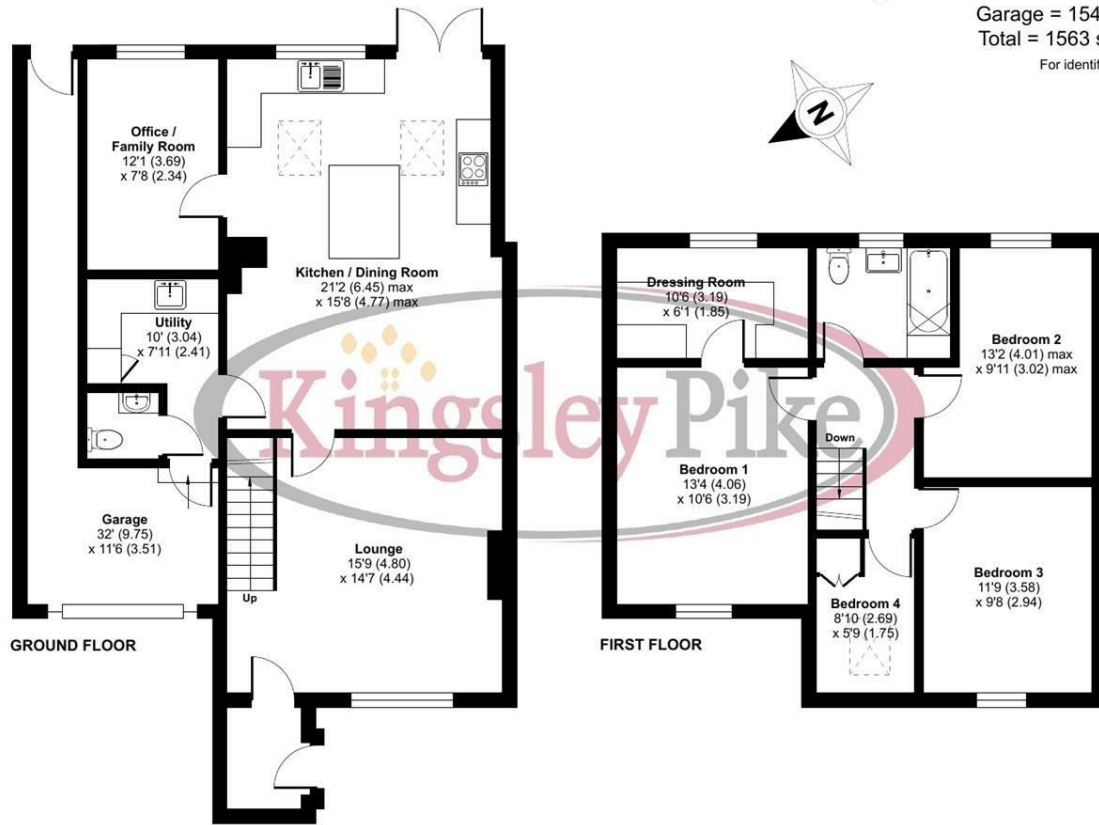
## Cowley Way, Sutton Benger, Chippenham, SN15

Approximate Area = 1409 sq ft / 130.9 sq m

Garage = 154 sq ft / 14.3 sq m

Total = 1563 sq ft / 145.2 sq m

For identification only - Not to scale

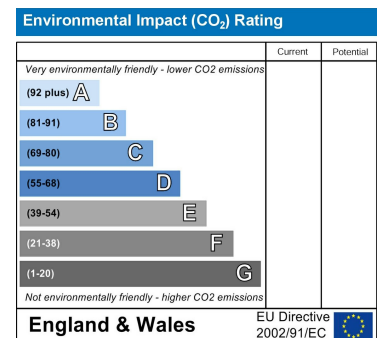
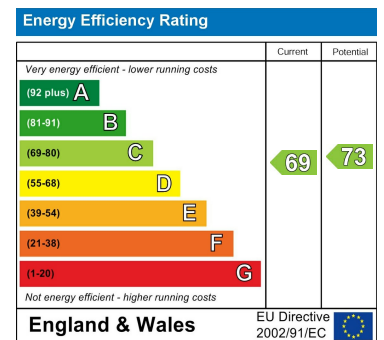


Floor plan produced in accordance with RICS Property Measurement Standards incorporating International Property Measurement Standards (IPMS2 Residential). © nchecom 2024. Produced for Kingsley Pike. REF: 1194809

# Area Map



# Energy Efficiency Graph



These particulars, whilst believed to be accurate are set out as a general outline only for guidance and do not constitute any part of an offer or contract. Intending purchasers should not rely on them as statements of representation of fact, but must satisfy themselves by inspection or otherwise as to their accuracy. No person in this firm's employment has the authority to make or give any representation or warranty in respect of the property.