



Guide Price
£375,000

Freehold

3x  1x  1x 

**Vauxhall Crescent,
Snodland, Kent, ME6**

OVER 60?

Secure this property
for up to **59% less!**

Wards
Helping you move forwards



Main features

- Beautifully presented chalet bungalow with stunning views
- Extremely peaceful location with easy travel links close by
- Super easy parking with 2 garages and parking to the front
- Stunning garden to enjoy all year round
- Ready to move straight into

Accommodation

GROUND FLOOR

Entrance Porch
Hallway
Lounge/Diner: 24'3 x 13'9 (7.40m x 4.19m)
Conservatory: 13'1 x 10'0 (3.99m x 3.05m)
Kitchen: 11'8 x 7'1 (3.56m x 2.16m)
Utility Area: 8'0 x 6'1 (2.44m x 1.86m)
Bedroom 2 : 10'0 x 9'10 (3.05m x 3.00m)
Bedroom 3: 9'11 x 7'5 (3.02m x 2.26m)
Shower Room

FIRST FLOOR

Bedroom 1: 17'7 x 15'0 (5.36m x 4.58m)

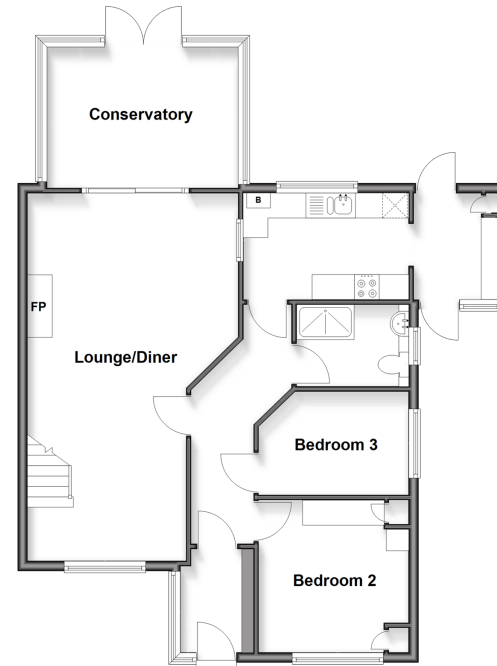
OUTBUILDING

Outbuilding 1 - Garage
Outbuilding 2 - Garage
Outbuilding 3

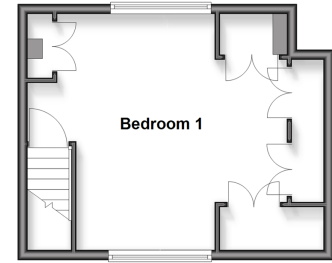
OUTSIDE

Front and Rear Gardens

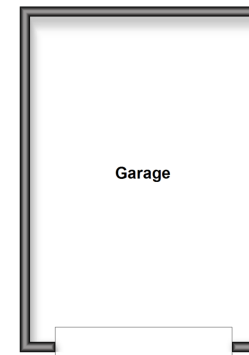
Ground Floor
Approx. 80.2 sq. metres (863.0 sq. feet)



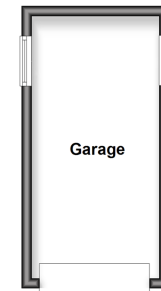
First Floor
Approx. 28.2 sq. metres (303.6 sq. feet)



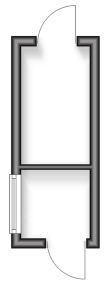
Outbuilding 1
Approx. 29.5 sq. metres (317.7 sq. feet)



Outbuilding 2
Approx. 13.5 sq. metres (145.5 sq. feet)



Outbuilding 3
Approx. 5.3 sq. metres (57.2 sq. feet)



Call Snodland - 01634 245055 ■ wardsof Kent.co.uk

- Legal advice should be taken to verify fixtures/fittings, planning, alterations and/or lease details
- Appliances & services are untested, dimensions are approximate and floor plans are not to scale
- Through a Homewise Home For Life Plan people aged 60+ can secure this property for up to 59% less, by purchasing a Lifetime Lease



13821872/20260224/CG/LK