



Eversley Road, SE7

£850,000

Dexters



Eversley Road, SE7

A stunning three-bedroom Edwardian terraced house on a sought-after tree-lined residential street, beautifully presented throughout and thoughtfully extended to create exceptional living and entertaining space while retaining an abundance of period charm and character.

The ground floor offers a striking separate reception room to the front, featuring a beautiful original fireplace and wood flooring throughout the ground floor. To the rear, the impressive kitchen/diner, complete with an island counter and ample storage space. French doors open directly onto a large family garden, providing a private and tranquil outdoor space. The garden also benefits from an annex, perfect for use as a home office or study. Upstairs, the first floor comprises three genuine double bedrooms, with the principal bedroom benefiting from built-in wardrobes. The family bathroom has been finished to a good standard. Further benefits include potential to extend into the loft (STPP), offering scope to create additional accommodation, as well as on-street parking.

Located on the popular Charlton Slopes, within catchment for highly regarded primary and secondary schools and nurseries. The property offers excellent transport links to the City and Canary Wharf, with regular buses to North Greenwich Station and Westcombe Park Station within 0.5 miles. Blackheath Standard and Greenwich Park are also just a short walk away.

Features

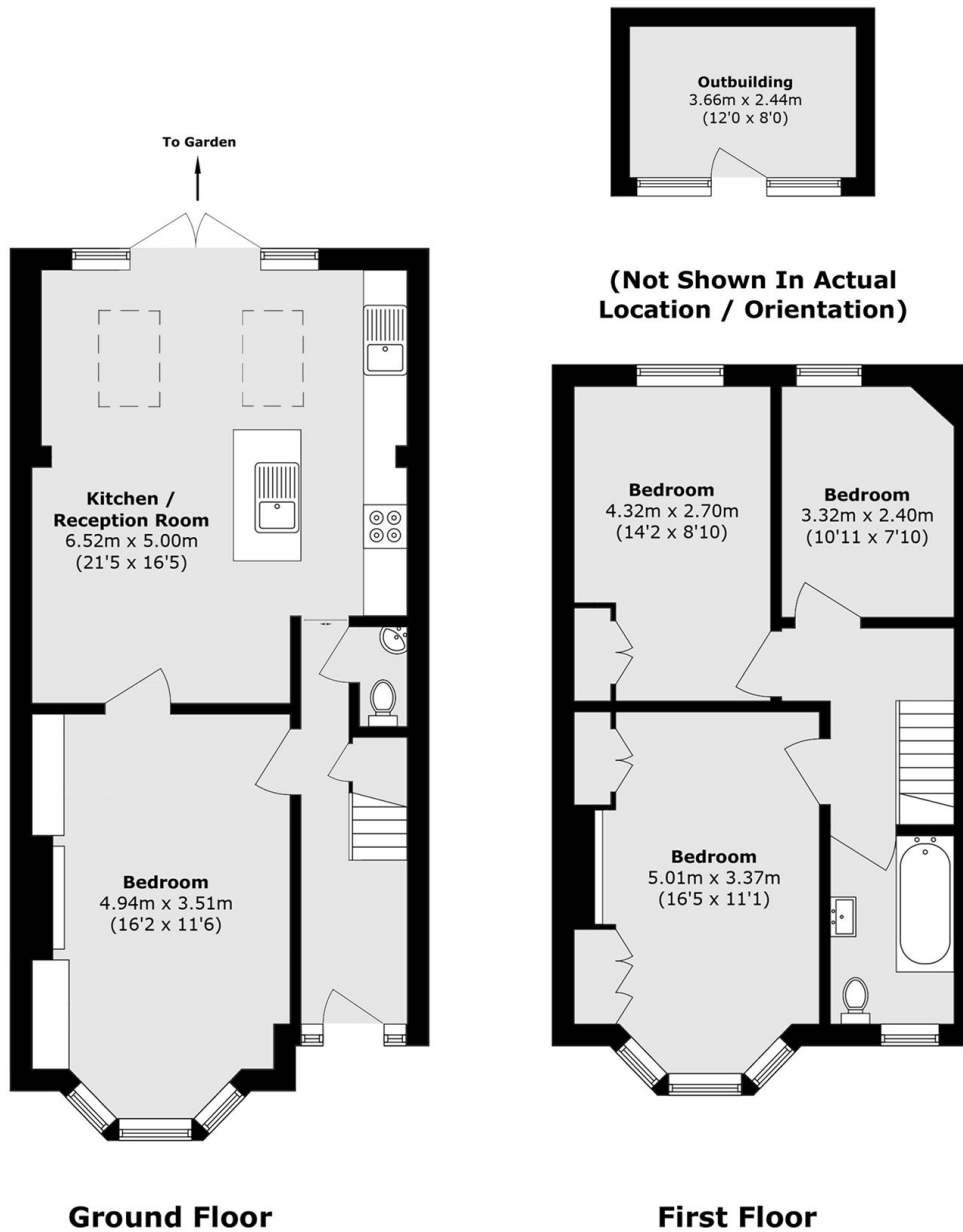
- Three Bedroom Terrace
- Extended Kitchen & Diner
- Sought After Road
- Private Garden
- Annex Studio
- Potential to Extend (STPP)







Eversley Road, London, SE7



Total area (approx.): 102.2 sq. m (1100.0 sq. ft)

Outbuilding area (approx.): 8.9 sq. m (95.7 sq. ft)